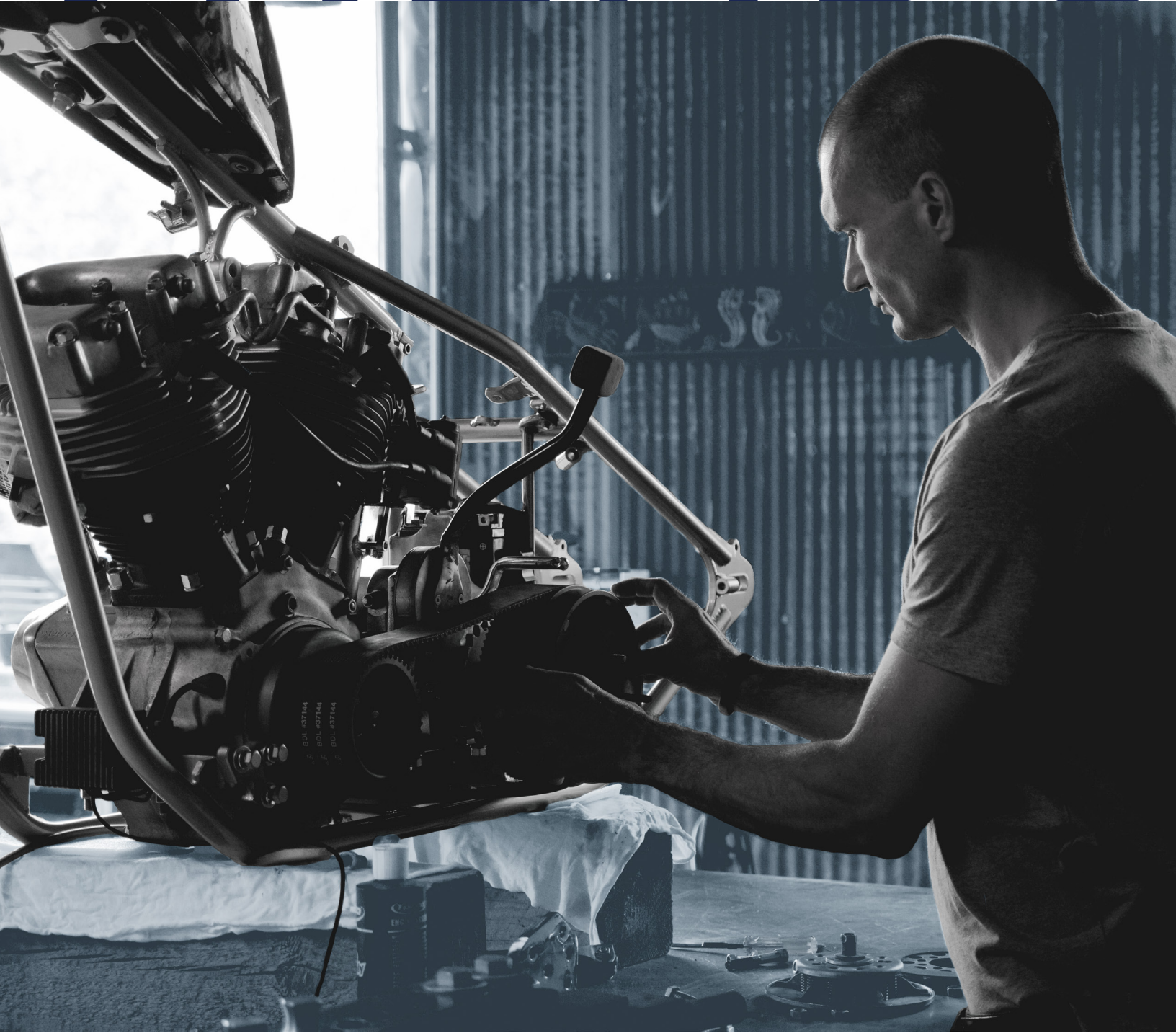


South Carolina Data

TRENDS



JANUARY/FEBRUARY 2022 ISSUE



Labor Market
Information

SC Department of Employment and Workforce
Labor Market Information Division
Columbia, South Carolina 29202

dew.sc.gov
scworkforceinfo.com

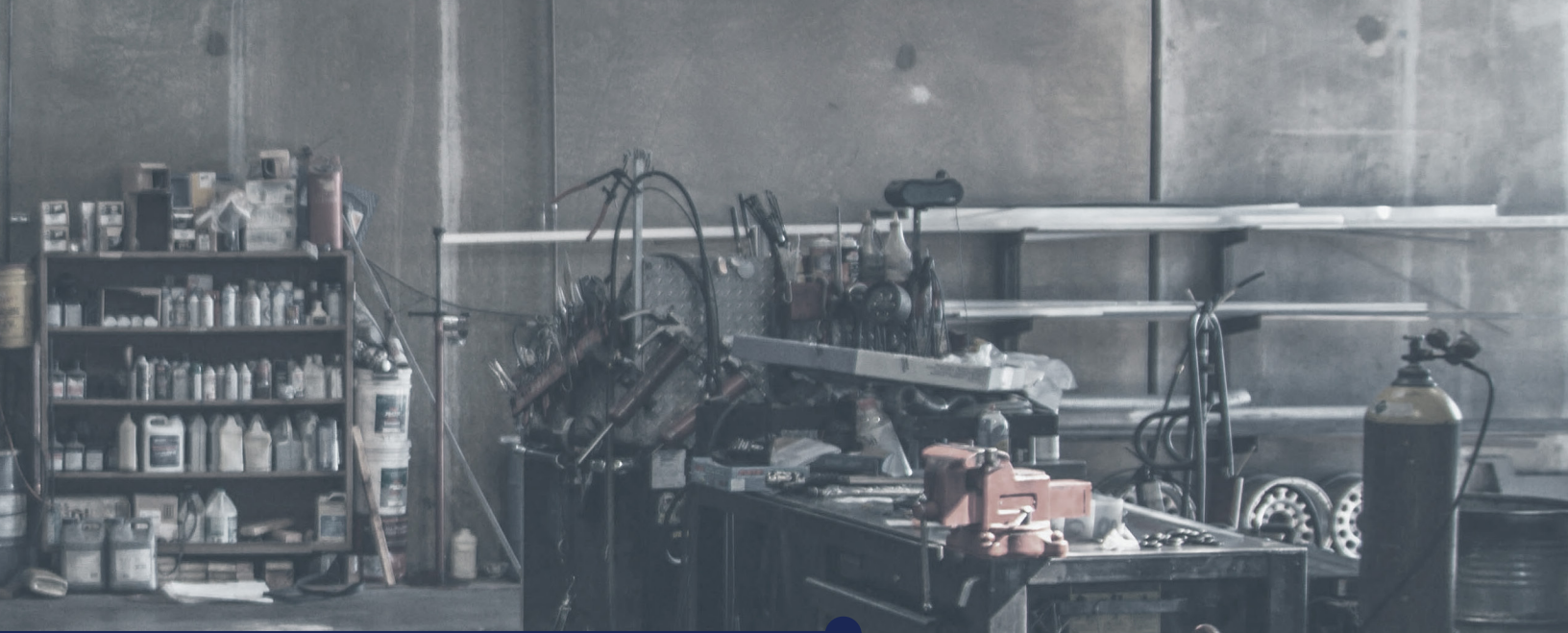


AT A GLANCE

Watch Your Six: Unemployment Rates in South Carolina	4
South Carolina's Employment Situation (February 2022)	8
Local Area Unemployment Statistics	10
Current Employment Statistics — Seasonally Adjusted	16
Current Employment Statistics — Not Seasonally Adjusted	18
Long Run Trends	28
Technical Notes	30



***Interested in receiving the latest issue of Trends in your inbox every month?
Click here to subscribe to our Trends mailing list!***



NOTE FROM THE DIRECTOR

Welcome to the January/February 2022 issue of Trends! I hope you like what we've done with the place. The Labor Market Information Division produces a lot of data on a monthly basis through the Local Area Unemployment Statistics and Current Employment Statistics programs, but we sent most of it to Washington without ever publishing it ourselves. Starting with this issue, Trends is the go-to resource for everything LAUS and CES. Did you know that we generate unemployment rates for our largest cities, or detailed breakdowns of payroll by industry for metropolitan areas? They're in here, along with a lot more information. Even better, if you want to analyze the data, you can download every number in this report into a spreadsheet with one click. We're not stopping with Trends, though: Our website, scworkforceinfo.com, is being redesigned to make it easier to use, so be sure to look out for that.

Thanks to the federal benchmarking process that happens every winter, we have two months of data to share in this issue. You might notice that numbers for previous years have changed; this is due to recent revisions by the U.S. Bureau of Labor Statistics. There's an ongoing effort to make sure data reflect reality as much as possible, not just what was published at the time.

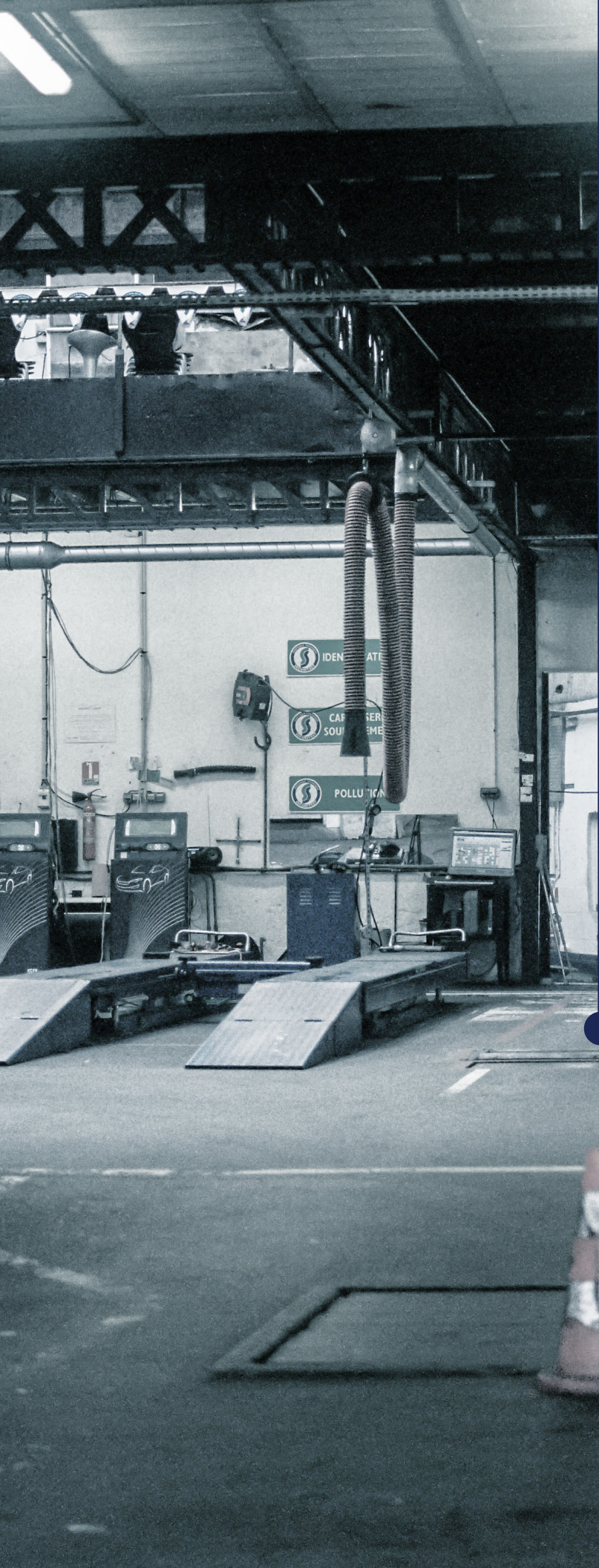
This month's featured article looks at unemployment rates—plural. Did you know there are six different ways to calculate it? This issue explains how each rate is different, what the numbers look like in South Carolina, and what it all might mean for our state's labor market.



As always, LMI is here to help! If you have any questions about South Carolina workforce data, please don't hesitate to email us at Imicustomerservice@dew.sc.gov. We'd also like to hear what you think about the new look of Trends. Thanks for reading.

Sincerely,

Bryan P. Grady, Ph.D.
Labor Market Information Director
SC Department of Employment and Workforce



WATCH YOUR SIX

Unemployment Rates in South Carolina

Along with our counterparts across the country, the LMI Division at DEW produces unemployment rates for the state and a variety of substate areas monthly. As of February 2022, this number was 3.5 percent for South Carolina. In simple terms, the unemployment rate that we report is the number of people who are unemployed divided by the sum of those either employed or unemployed (i.e., the civilian labor force). To be considered unemployed, a potential worker must have actively sought employment sometime in the past four weeks; if they did not, then that person is considered to not be in the labor force and is excluded from the calculation.

As you might expect, however, that's not the only way for someone to determine the overall condition of the state's labor market. What if, instead of one unemployment rate, there were several, all measuring slightly different things? As it happens, there are. The U.S. Bureau of Labor Statistics (BLS) computes six figures every month for the country as a whole and, back in January, released 2021 data for each state. What are these "alternate measures of labor underutilization," as the BLS calls them, and what insights can they provide about our state's economy?

The six unemployment rates are called, somewhat unoriginally, U-1 through U-6. The unemployment rate that we are all familiar with is U-3. What are the other five? Here are the official definitions from BLS:

U-1: Persons unemployed 15 weeks or longer, as a percent of the civilian labor force

U-2: Job losers and persons who completed temporary jobs, as a percent of the civilian labor force

U-3: Total unemployed, as a percent of the civilian labor force

U-4: Total unemployed plus discouraged workers, as a percent of the civilian labor force plus discouraged workers

U-5: Total unemployed, plus discouraged workers, plus all other marginally attached workers, as a percent of the civilian labor force plus all marginally attached workers

U-6: Total unemployed, plus all marginally attached workers, plus total employed part time for economic reasons, as a percent of the civilian labor force plus all marginally attached workers

In short, U-1 and U-2 measure unemployment rates for populations of concern, namely those who have been jobless for an extended period and those who were laid off or reached the end of a temporary job, respectively. People who are unemployed may be in either group, both, or neither. Both U-1 and U-2 will necessarily be smaller than U-3, because a portion of those unemployed can never exceed the total.

On the flip side, U-4 and U-5 will necessarily be larger than U-3, because they consider larger groups of people who are not currently working. The central concept here is that of individuals who are “marginally attached” to the labor force. BLS defines this group as “those persons not in the labor force who want and are available for work, and who have looked for a job sometime in the prior 12 months but were not counted as unemployed because they had not searched for work in the four weeks preceding the survey.”

U-4 considers the labor market impact of discouraged workers, which is a subset of marginally attached persons who “were not currently looking for work specifically because they believed no jobs were available for them or there were none for which they would qualify.” Meanwhile, U-5 accounts for all discouraged workers; this measure classifies all such individuals as unemployed despite not having looked for work in the past four weeks as traditionally unemployed individuals are. Mathematically, then, U-4 is always higher than U-3, and U-5 is always higher than U-4.

Finally, U-6 serves as the broadest measure of labor underutilization. Unlike each of the other five, U-6 includes as unemployed anyone who is currently working part-time (less than 35 hours) but does so for “economic reasons,” i.e., they would work full-time if they could. Therefore, U-6 essentially asks how many people could plausibly be brought into working full-time.

Here’s how these six rates were calculated for 2021:

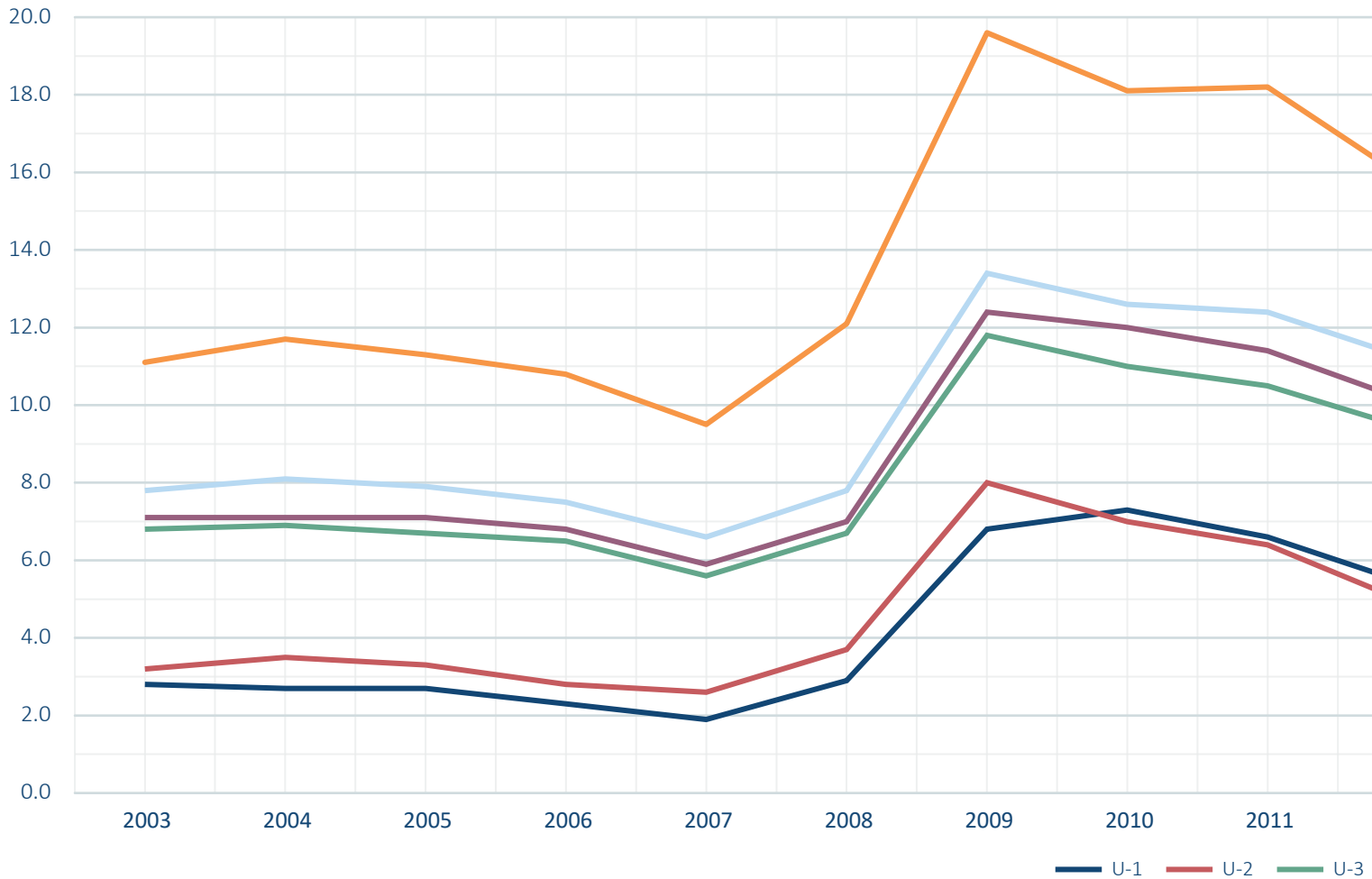
CALCULATION OF ALTERNATE MEASURES OF LABOR UTILIZATION, SOUTH CAROLINA, 2021

U-1	$\frac{\text{Persons unemployed 15 weeks or longer (44,300)}}{\text{Civilian labor force (2,391,700)}}$	= 1.9 percent
U-2	$\frac{\text{Job losers and persons who completed temporary jobs (41,500)}}{\text{Civilian labor force (2,391,700)}}$	= 1.7 percent
U-3	$\frac{\text{Total unemployed (97,100)}}{\text{Civilian labor force (2,391,700)}}$	= 4.1 percent
U-4	$\frac{\text{Total unemployed (97,100) + Discouraged workers (12,100)}}{\text{Civilian labor force (2,391,700) + Discouraged workers (12,100)}}$	= 4.5 percent
U-5	$\frac{\text{Total unemployed (97,100) + Marginally attached (30,100)}}{\text{Civilian labor force (2,391,700) + Marginally attached (30,100)}}$	= 5.2 percent
U-6	$\frac{\text{Total unemployed (97,100) + Marginally attached (30,100) + Involuntary part-time (43,900)}}{\text{Civilian labor force (2,391,700) + Marginally attached (30,100)}}$	= 7.1 percent

Source: U.S. Bureau of Labor Statistics

And here's what they look like historically, dating back to 2003:

ALTERNATE MEASURES OF LABOR UNDERUTILIZATION,

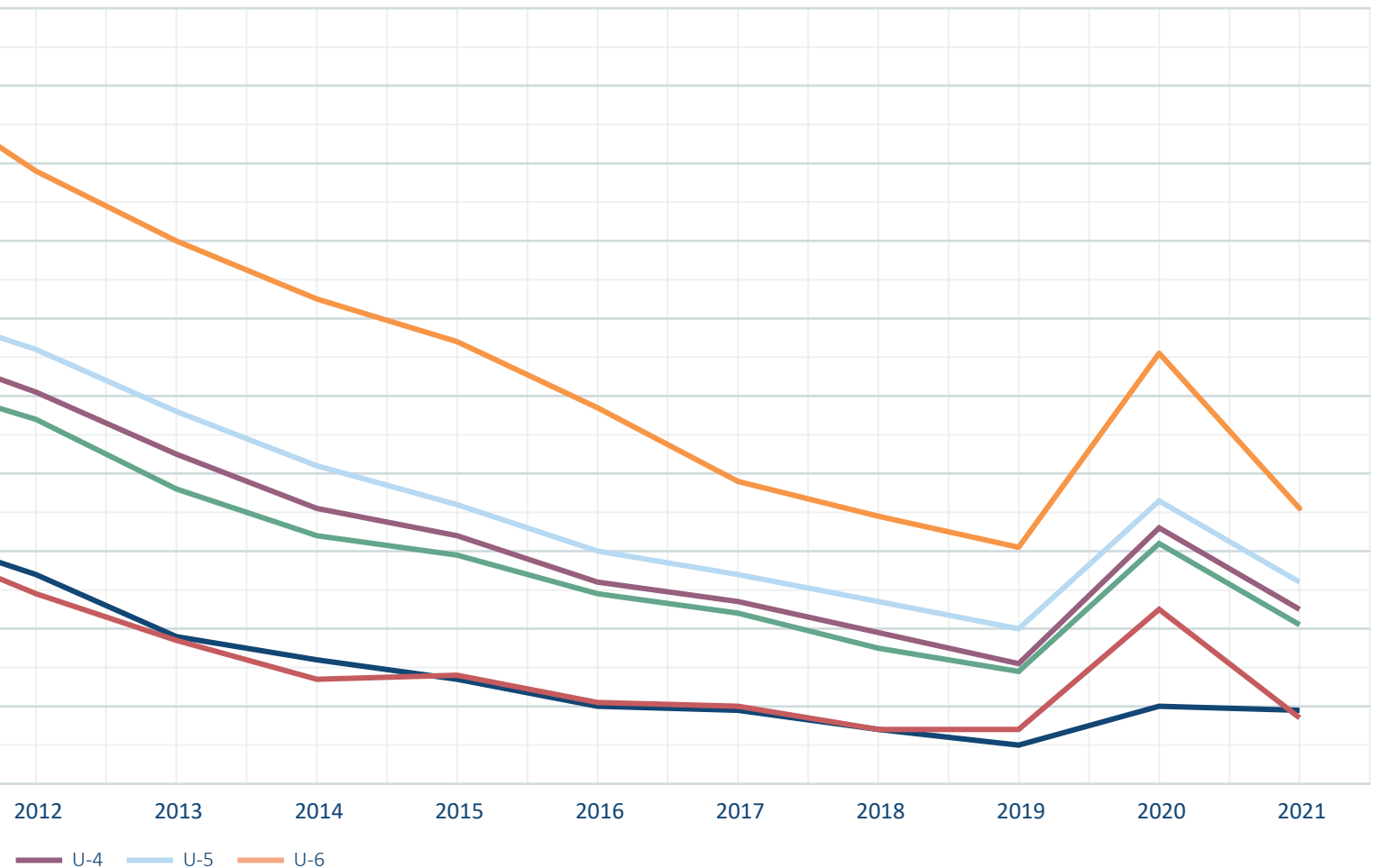


Source: U.S. Bureau of Labor Statistics

As one would expect, the various measures have generally tracked one another over time. U-1 and U-2 each represent roughly half of the unemployed population at any given time, with one rate only a fraction of a percentage point above the other. (The major exception to this was in 2020, when long-term unemployment only increased slightly while other rates spiked substantially due to economic disruptions during the first wave of the pandemic.) U-4 and U-5 are only slightly higher than U-3 throughout the graph, suggesting that there are few people in South Carolina considered marginally attached to the labor force. Finally, U-6 is substantially higher than any other rate; this is true in both loose and tight labor markets, indicating that there is always a substantial number of people who would prefer full-time employment but can only find a part-time job.

Among the states, using the standard unemployment rate (U-3), South Carolina tied with Arkansas and Tennessee for the 18th lowest rate in the country in 2021 (4.1 percent). This varies somewhat when evaluating the state's position

SOUTH CAROLINA, 2003-2021 (IN PERCENT)



by other measures. For example, South Carolina's U-2 rate is 1.7 percent, which is tied with Montana for the 5th lowest nationwide; this suggests that the state has a smaller pool of laid off and unemployed temporary workers than nearly all states. The state's U-6 rate of 7.1 percent (tied for 14th, again with Arkansas) suggests that involuntarily part-time workers are also somewhat less common in South Carolina than the nation at large.

What is the takeaway here? It's important to remember that an assessment of the state's labor market, let alone its economy at large, cannot and should not be boiled down to a single number. There are a lot of different tools in the box, depending on the precise question that you are trying to answer. As always, the Labor Market Information Division is here to help. Contact us at Imicustomerservice@dew.sc.gov for assistance with your workforce data inquiries.



SOUTH CAROLINA'S EMPLOYMENT SITUATION (FEBRUARY 2022)

Household Survey¹ (Local Area Unemployment Statistics)

EMPLOYMENT: The seasonally adjusted, monthly survey of households estimated the number of South Carolinians working increased to 2,295,706.

- That is an increase of 3,406 people over the January estimate.
- That is a significant increase of 49,175 people over the February 2021 estimate.

UNEMPLOYMENT: The estimate of unemployed people showed little change at 82,658.

- That is an increase of 416 people from January's estimate and a significant decrease of 21,756 over the February 2021 estimate.
- The state's seasonally adjusted unemployment rate showed no change over the month, remaining at 3.5 percent.
- Nationally, the unemployment rate decreased to 3.8 percent in February from 4.0 percent in January, according to the Current Population Survey.

LABOR FORCE: The state's estimated labor force (people working plus unemployed people looking for work) increased to 2,378,364 from January's level of 2,374,542.

- That is an increase of 3,822 people over the January estimate.
- That is an increase of 27,419 individuals over the February 2021 estimate.

Employer Survey² (Current Employment Statistics)

NONAGRICULTURAL EMPLOYMENT BY INDUSTRY (SEASONALLY ADJUSTED³)

The monthly survey of businesses in South Carolina marked an estimated increase of 17,500 nonfarm payroll jobs over the month to a level of 2,195,900.

- Industries that reported gains were Professional and Business Services (+7,100); Government (+2,700); Leisure and Hospitality (+2,200); Trade, Transportation, and Utilities (+2,000); Education and Health Services (+1,600); Manufacturing (+1,000); Financial Activities (+800); Other Services (+500); and Construction (+200).
- Decreases were observed in the Information (-700) industry.

From February 2021 to February 2022, South Carolina's economy has picked up 64,700 seasonally adjusted, nonfarm jobs.

- Industries with strong growth were reported in Leisure and Hospitality (+18,800); Trade, Transportation, and Utilities (+16,100); Professional and Business Services (+8,300); Manufacturing (+7,100); Financial Activities (+5,500); Other Services (+4,600); Education and Health Services (+2,600); Information (+1,100); and Construction (+900).
- There was a decline noticed in the Government (-500) industry over the year.



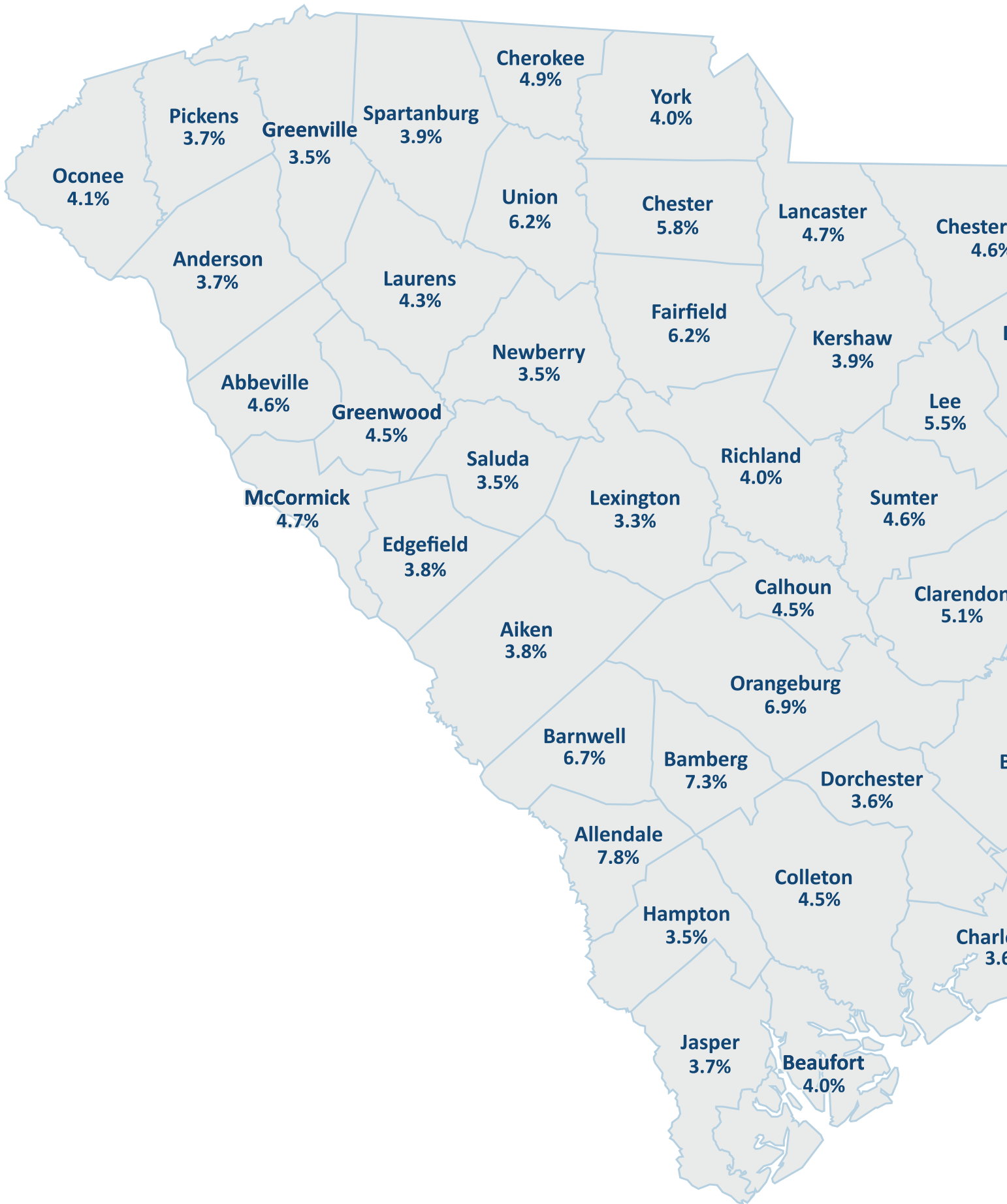
NONAGRICULTURAL EMPLOYMENT BY INDUSTRY (NOT SEASONALLY ADJUSTED⁴)

Not seasonally adjusted, nonfarm payroll employment increased by 33,300 from January 2022 to February 2022 for a total of 2,181,400.

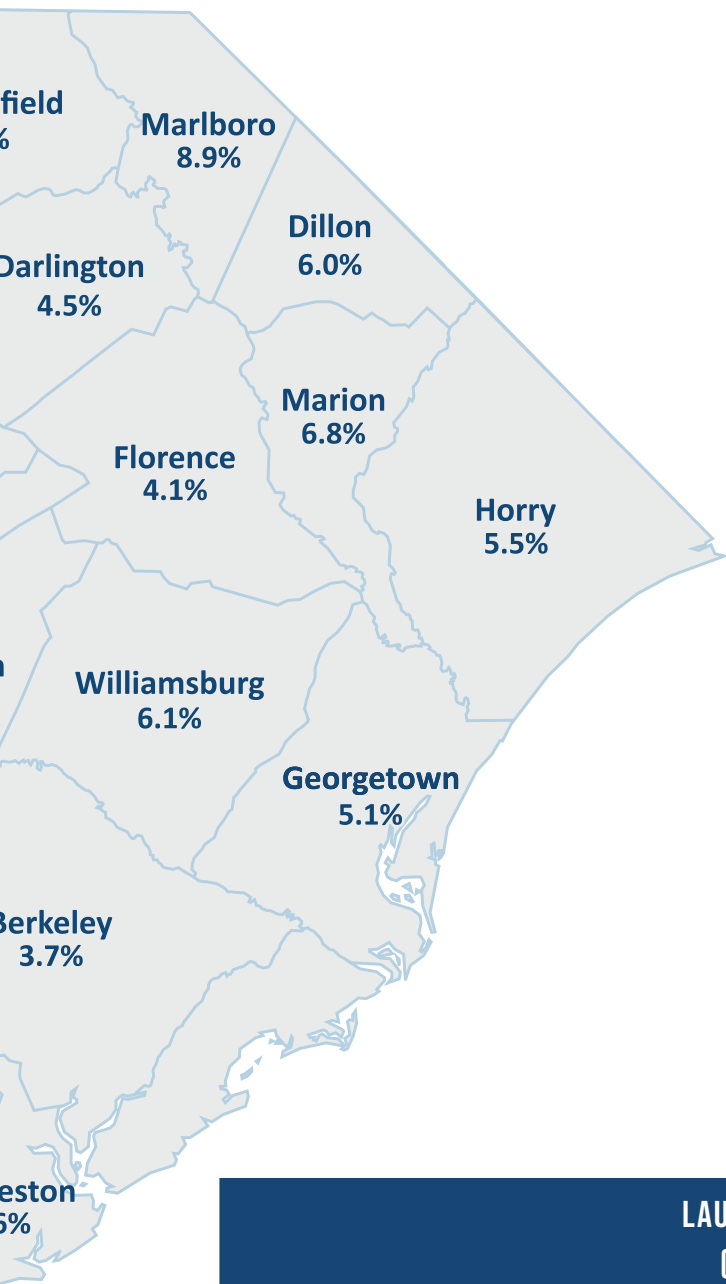
- Increases were reported in the Professional and Business Services (+12,100); Government (+7,300); Leisure and Hospitality (+6,200); Education and Health Services (+4,300); Manufacturing (+1,600); Trade, Transportation and Utilities (+800); Other Services (+600); Financial Activities (+600); Construction (+300); and Mining and Logging (+100) industries.
- Decreases were reported in the Information (-600) industry.

Since February 2021, not seasonally adjusted, nonfarm jobs were up 73,200 in South Carolina.

- Industries making strong annual gains were Leisure and Hospitality (+18,800); Trade, Transportation, and Utilities (+18,400); Professional and Business Services (+11,100); Manufacturing (+6,900); Financial Activities (+6,100); Other Services (+5,000); Education and Health Services (+1,800); Government (+1,800); Construction (+1,600); Information (+1,500); and Mining and Logging (+200).
- No industry showed a decline over the year.



LOCAL AREA UNEMPLOYMENT STATISTICS



LAUS EMPLOYMENT ESTIMATES (SEASONALLY ADJUSTED)						
CIVILIAN NON-INSTITUTIONAL POPULATION	CIVILIAN LABOR FORCE					
	TOTAL	PERCENT OF POPULATION	EMPLOYMENT		UNEMPLOYMENT	
			TOTAL	PERCENT OF POPULATION	TOTAL	RATE
4,161,478	2,378,364	57.2	2,295,706	55.2	82,658	3.5

NOTE: Current month's estimates are preliminary. All data are subject to revision.



STATE OF SOUTH CAROLINA LOCAL AREA UNEMPLOYMENT ESTIMATES BY COUNTY (NOT SEASONALLY ADJUSTED)

AREA	FEBRUARY 2022					JANUARY 2022				FEBRUARY 2021**			
	LABOR FORCE	EMPLOY- MENT	UNEMPLOYMENT		LABOR FORCE	EMPLOY- MENT	UNEMPLOYMENT		LABOR FORCE	EMPLOY- MENT	UNEMPLOYMENT		
			LEVEL	RATE (%)			LEVEL	RATE (%)			LEVEL	RATE (%)	
Lexington County	↑	151,347	146,339	5,008	3.3%	149,193	144,873	4,320	2.9%	150,288	144,261	6,027	4.0%
Greenville County	↑	261,244	252,060	9,184	3.5%	258,314	250,228	8,086	3.1%	256,005	244,638	11,367	4.4%
Hampton County	↑	7,939	7,663	276	3.5%	7,885	7,637	248	3.1%	8,135	7,749	386	4.7%
Newberry County	↑	19,224	18,558	666	3.5%	18,978	18,399	579	3.1%	19,357	18,514	843	4.4%
Saluda County	↑	8,338	8,043	295	3.5%	8,160	7,913	247	3.0%	8,665	8,286	379	4.4%
Charleston County	↑	214,762	207,085	7,677	3.6%	214,086	207,207	6,879	3.2%	211,808	201,655	10,153	4.8%
Dorchester County	↑	79,353	76,489	2,864	3.6%	79,044	76,501	2,543	3.2%	77,865	74,183	3,682	4.7%
Anderson County	↑	91,897	88,474	3,423	3.7%	90,828	87,821	3,007	3.3%	91,050	86,620	4,430	4.9%
Berkeley County	↑	109,415	105,360	4,055	3.7%	108,977	105,383	3,594	3.3%	105,390	100,393	4,997	4.7%
Jasper County	↑	13,147	12,659	488	3.7%	13,024	12,609	415	3.2%	12,923	12,327	596	4.6%
Pickens County	↑	58,176	56,003	2,173	3.7%	57,413	55,614	1,799	3.1%	57,386	54,852	2,534	4.4%
Aiken County	↑	74,461	71,660	2,801	3.8%	74,398	72,046	2,352	3.2%	75,676	72,306	3,370	4.5%
Edgefield County	↑	10,389	9,991	398	3.8%	10,353	10,027	326	3.1%	10,809	10,317	492	4.6%
Kershaw County	↑	29,389	28,231	1,158	3.9%	28,948	27,931	1,017	3.5%	29,373	27,969	1,404	4.8%
Spartanburg County	↑	158,076	151,984	6,092	3.9%	157,720	152,130	5,590	3.5%	158,424	150,649	7,775	4.9%
Beaufort County	↑	76,785	73,749	3,036	4.0%	75,865	73,350	2,515	3.3%	77,144	73,599	3,545	4.6%
Richland County	↑	198,026	190,039	7,987	4.0%	195,639	188,199	7,440	3.8%	198,983	188,506	10,477	5.3%
York County	↑	148,354	142,451	5,903	4.0%	147,648	142,134	5,514	3.7%	143,622	136,798	6,824	4.8%
Florence County	↑	65,938	63,218	2,720	4.1%	66,083	63,579	2,504	3.8%	67,080	63,662	3,418	5.1%
Oconee County	↑	34,113	32,730	1,383	4.1%	33,826	32,695	1,131	3.3%	34,873	33,278	1,595	4.6%
Laurens County	↑	30,253	28,955	1,298	4.3%	29,933	28,735	1,198	4.0%	30,163	28,502	1,661	5.5%
Calhoun County	↑	6,427	6,137	290	4.5%	6,336	6,069	267	4.2%	6,550	6,184	366	5.6%
Colleton County	↑	16,072	15,353	719	4.5%	16,063	15,409	654	4.1%	16,657	15,691	966	5.8%
Darlington County	↑	29,739	28,399	1,340	4.5%	29,772	28,513	1,259	4.2%	30,318	28,558	1,760	5.8%
Greenwood County	↑	30,218	28,851	1,367	4.5%	30,113	28,867	1,246	4.1%	31,626	29,807	1,819	5.8%
Abbeville County	↑	9,607	9,162	445	4.6%	9,576	9,178	398	4.2%	10,089	9,542	547	5.4%
Chesterfield County	↑	21,588	20,587	1,001	4.6%	21,536	20,575	961	4.5%	21,759	20,512	1,247	5.7%
Sumter County	↑	42,530	40,556	1,974	4.6%	42,466	40,662	1,804	4.2%	43,788	41,197	2,591	5.9%
Lancaster County	↑	43,741	41,690	2,051	4.7%	43,475	41,572	1,903	4.4%	42,428	40,054	2,374	5.6%
McCormick County	↑	3,287	3,134	153	4.7%	3,278	3,142	136	4.1%	3,373	3,155	218	6.5%
Cherokee County	↑	24,891	23,665	1,226	4.9%	24,806	23,645	1,161	4.7%	25,039	23,427	1,612	6.4%
Clarendon County	↑	12,043	11,428	615	5.1%	11,997	11,438	559	4.7%	12,619	11,815	804	6.4%
Georgetown County	↑	24,641	24,338	1,303	5.1%	25,442	24,214	1,228	4.8%	25,820	24,118	1,702	6.6%
Horry County	↑	149,127	140,927	8,200	5.5%	147,390	139,385	8,005	5.4%	144,265	134,085	10,180	7.1%
Lee County	↓	6,525	6,163	362	5.5%	6,538	6,165	373	5.7%	6,753	6,298	455	6.7%
Chester County	↓	13,459	12,680	779	5.8%	13,436	12,635	801	6.0%	13,537	12,546	991	7.3%
Dillon County	↑	13,125	12,335	790	6.0%	13,147	12,374	773	5.9%	13,413	12,480	933	7.0%
Williamsburg County	↑	10,846	10,186	660	6.1%	10,870	10,217	653	6.0%	11,769	10,909	860	7.3%
Fairfield County	↑	9,311	8,734	577	6.2%	9,193	8,640	553	6.0%	9,564	8,890	674	7.0%
Union County	↓	11,564	10,852	712	6.2%	11,604	10,864	740	6.4%	12,033	11,113	920	7.6%
Barnwell County	↓	7,462	6,860	502	6.7%	7,504	6,992	512	6.8%	7,965	7,340	625	7.8%
Marion County	↓	12,752	11,889	863	6.8%	12,826	11,929	897	7.0%	13,326	12,293	1,033	7.8%
Orangeburg County	↓	34,113	31,772	2,341	6.9%	34,108	31,673	2,435	7.1%	34,837	32,018	2,819	8.1%
Bamberg County	—	4,698	4,357	341	7.3%	4,698	4,354	344	7.3%	4,783	4,337	446	9.3%
Allendale County	↑	2,384	2,199	185	7.8%	2,371	2,188	183	7.7%	2,636	2,384	252	9.6%
Marlboro County	↑	8,715	7,943	772	8.9%	8,833	8,080	753	8.5%	9,208	8,374	834	9.1%

Current month's estimates are preliminary. All data are subject to revision.

**2021 substate estimates will be revised at the conclusion of the Bureau of Labor Statistics annual benchmarking process on April 15th.

Bureau of Labor Statistics annual benchmarking process on April 15th.

↑ Unemployment Rate Up
↓ Unemployment Rate Down
— Unemployment Rate =

LOCAL AREA UNEMPLOYMENT ESTIMATES BY MSA (NOT SEASONALLY ADJUSTED)

METROPOLITAN STATISTICAL AREA	FEBRUARY 2022					JANUARY 2022				FEBRUARY 2021			
	LABOR FORCE	EMPLOY- MENT	UNEMPLOYMENT		LABOR FORCE	EMPLOY- MENT	UNEMPLOYMENT		LABOR FORCE	EMPLOY- MENT	UNEMPLOYMENT		
			LEVEL	RATE (%)			LEVEL	RATE (%)			LEVEL	RATE (%)	
Charleston-North Charleston	↑	403,530	388,934	14,596	3.6	402,107	389,091	13,016	3.2	395,063	376,231	18,832	4.8
Columbia	↑	402,838	387,523	15,315	3.8	397,469	383,625	13,844	3.5	403,423	384,096	19,327	4.8
Florence	↑	95,677	91,617	4,060	4.2	95,855	92,092	3,763	3.9	97,398	92,220	5,178	5.3
Greenville-Anders- on- Mauldin	↑	441,570	425,492	16,078	3.6	436,488	422,398	14,090	3.2	434,604	414,612	19,992	4.6
Hilton Head Island- Bluffton-Beaufort	↑	89,932	86,408	3,524	3.9	88,889	85,959	2,930	3.3	90,067	85,926	4,141	4.6
Myrtle Beach- Conway-North Myrtle Beach	↑	203,426	192,470	10,956	5.4	200,827	190,016	10,811	5.4	196,288	182,362	13,926	7.1
Spartanburg	↑	169,640	162,836	6,804	4.0	169,324	162,994	6,330	3.7	170,457	161,762	8,695	5.1
Sumter	↑	42,530	40,556	1,974	4.6	42,466	40,662	1,804	4.2	43,788	41,197	2,591	5.9
Augusta-Richmond County, GA (SC portion)	↑	84,850	81,651	3,199	3.8	84,751	82,073	2,678	3.2	86,485	82,623	3,862	4.5
Charlotte-Concord- Gastonia, NC (SC portion)	↑	205,554	196,821	8,733	4.2	204,559	196,341	8,218	4.0	199,587	189,398	10,189	5.1

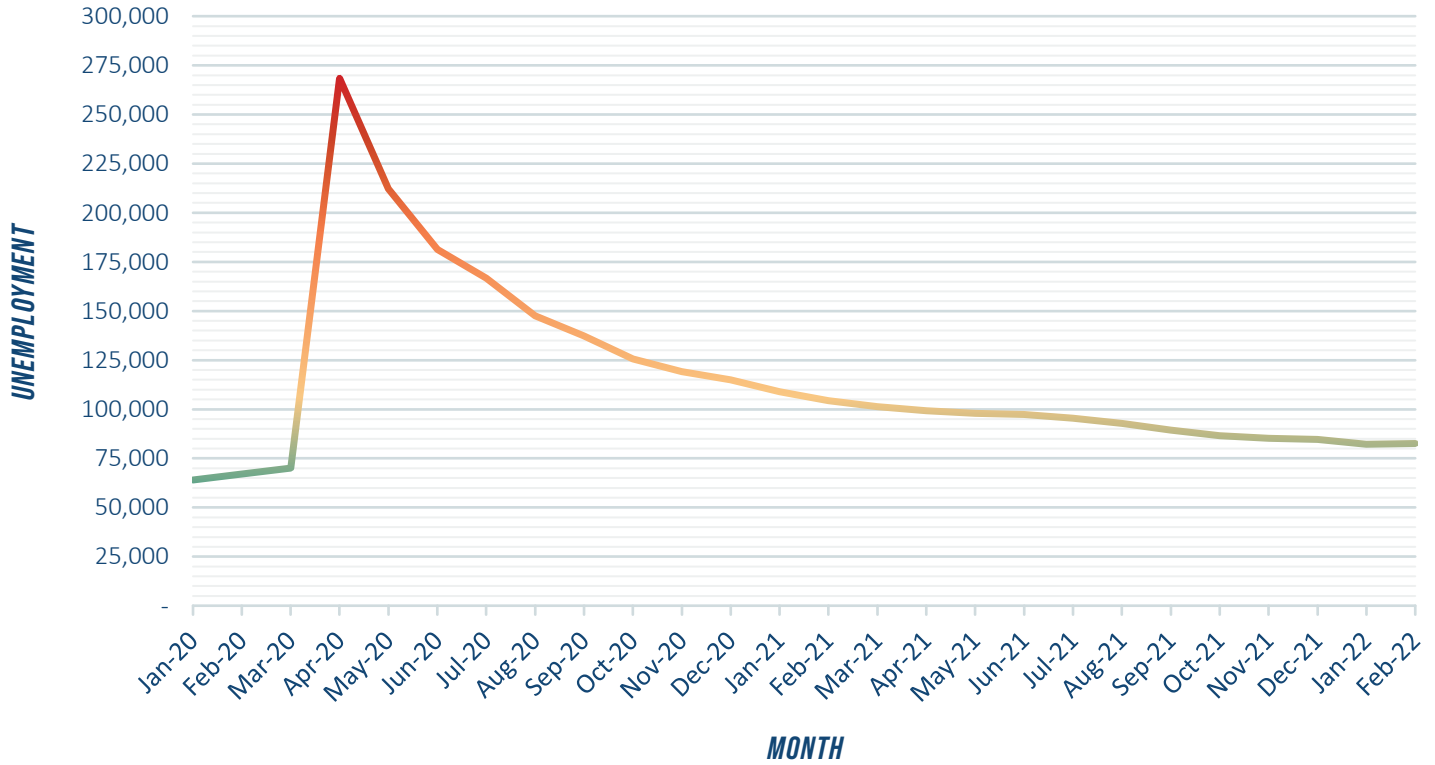
LOCAL AREA UNEMPLOYMENT ESTIMATES BY MUNICIPALITY (NOT SEASONALLY ADJUSTED)

CITIES AND TOWNS ABOVE 25,000 POPULATION	FEBRUARY 2022					JANUARY 2022				FEBRUARY 2021			
	LABOR FORCE	EMPLOY- MENT	UNEMPLOYMENT		LABOR FORCE	EMPLOY- MENT	UNEMPLOYMENT		LABOR FORCE	EMPLOY- MENT	UNEMPLOYMENT		
			LEVEL	RATE (%)			LEVEL	RATE (%)			LEVEL	RATE (%)	
Aiken	↑	13,078	12,535	543	4.2	13,065	12,602	463	3.5	13,432	12,694	738	5.5
Anderson	↑	11,593	11,116	477	4.1	11,471	11,034	437	3.8	11,671	10,970	701	6.0
Bluffton	↑	13,017	12,583	434	3.3	12,822	12,515	307	2.4	12,061	11,578	483	4.0
Charleston	↑	75,718	73,068	2,650	3.5	75,433	73,109	2,324	3.1	74,472	71,168	3,304	4.4
Columbia	↑	57,302	54,833	2,469	4.3	56,414	54,302	2,112	3.7	57,880	54,630	3,250	5.6
Conway	↑	10,041	9,519	522	5.2	9,854	9,414	440	4.5	9,801	9,114	687	7.0
Florence	↑	19,355	18,590	765	4.0	19,417	18,696	721	3.7	19,644	18,655	989	5.0
Goose Creek	↑	20,746	19,963	783	3.8	20,649	19,967	682	3.3	20,015	19,124	891	4.5
Greenville	↑	37,422	36,091	1,331	3.6	37,047	35,829	1,218	3.3	36,540	34,841	1,699	4.6
Greer	↑	18,455	17,851	604	3.3	18,259	17,756	503	2.8	17,422	16,749	673	3.9
Hanahan	↑	14,414	14,009	405	2.8	14,335	14,012	323	2.3	13,647	13,156	491	3.6
Hilton Head Island	↑	17,216	16,590	626	3.6	17,021	16,501	520	3.1	17,719	16,964	755	4.3
Mauldin	↑	13,835	13,391	444	3.2	13,697	13,294	403	2.9	13,692	13,140	552	4.0
Mount Pleasant	↑	50,531	49,058	1,473	2.9	50,330	49,086	1,244	2.5	49,586	47,952	1,634	3.3
Myrtle Beach	↓	15,632	14,629	1,003	6.4	15,502	14,469	1,033	6.7	15,357	14,018	1,339	8.7
North Charleston	↑	56,825	54,499	2,326	4.1	56,759	54,526	2,233	3.9	55,732	52,364	3,368	6.0
Rock Hill	↑	40,268	38,416	1,852	4.6	40,043	38,331	1,712	4.3	39,704	37,327	2,377	6.0
Spartanburg	↑	16,966	16,135	831	4.9	16,899	16,151	748	4.4	17,540	16,351	1,189	6.8
Summerville	↑	25,431	24,551	880	3.5	25,277	24,556	721	2.9	25,135	23,898	1,237	4.9
Sumter	↑	15,172	14,441	731	4.8	15,158	14,479	679	4.5	15,682	14,695	987	6.3

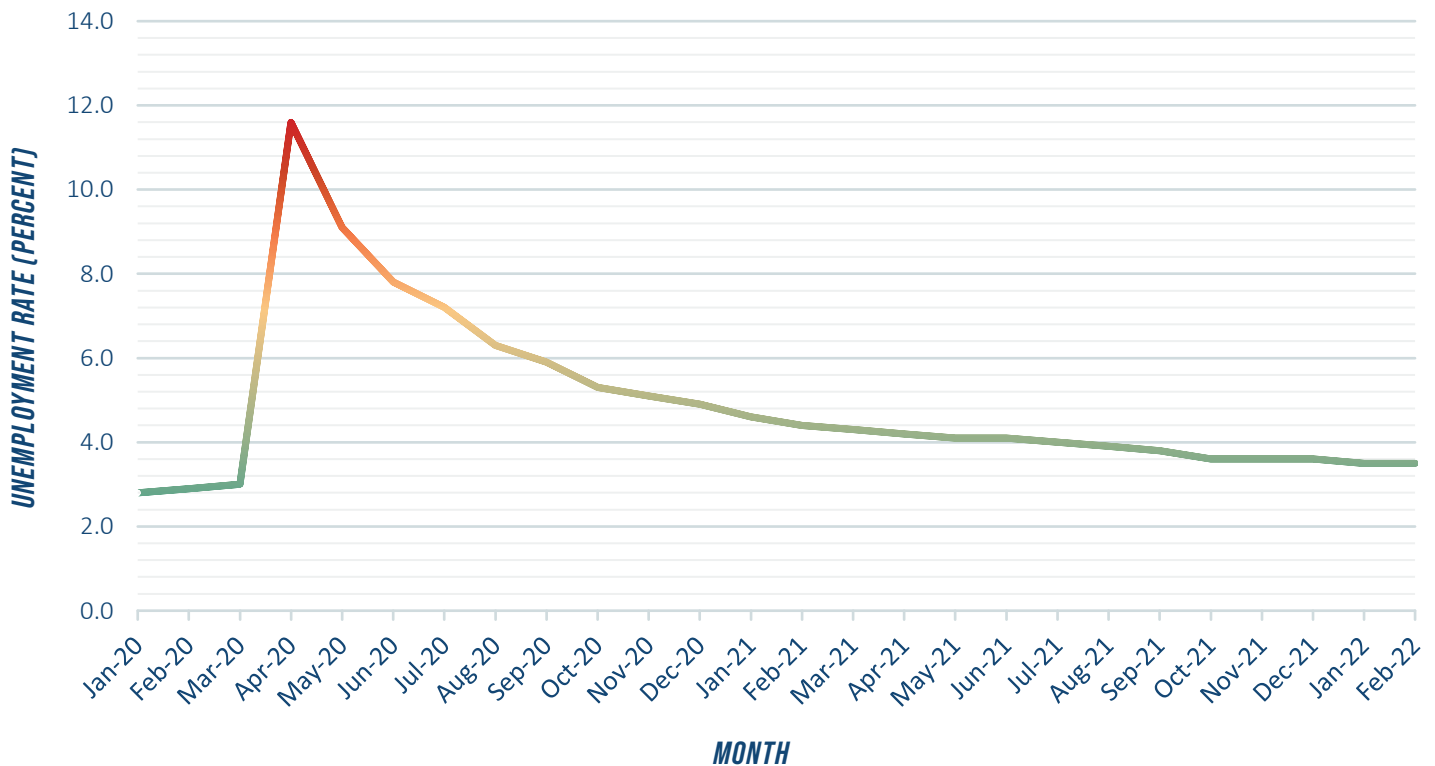
Current month's estimates are preliminary. February data not yet available for municipalities. All data are subject to revision.

**2021 substate estimates will be revised at the conclusion of the Bureau of Labor Statistics annual benchmarking process on April 15th.

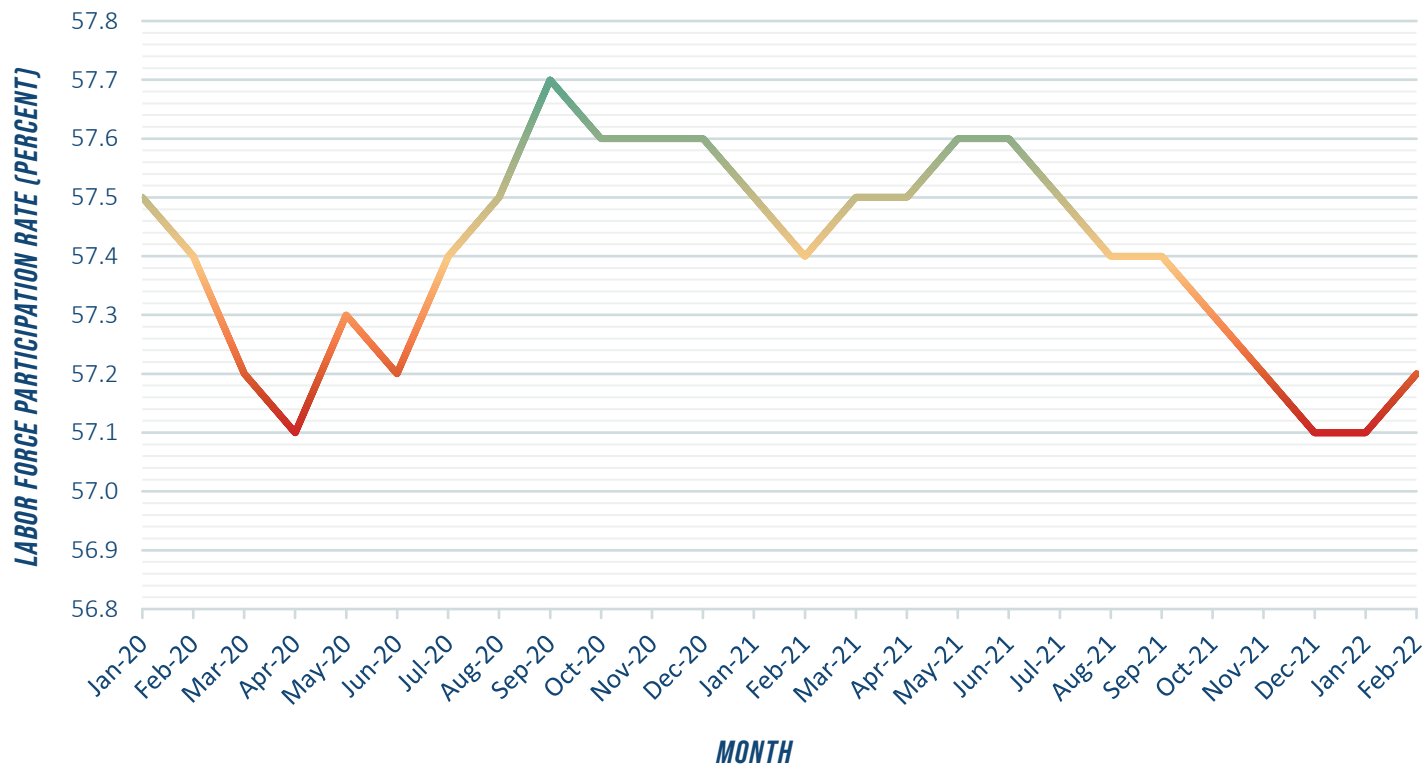
TOTAL UNEMPLOYMENT SINCE JANUARY 2020



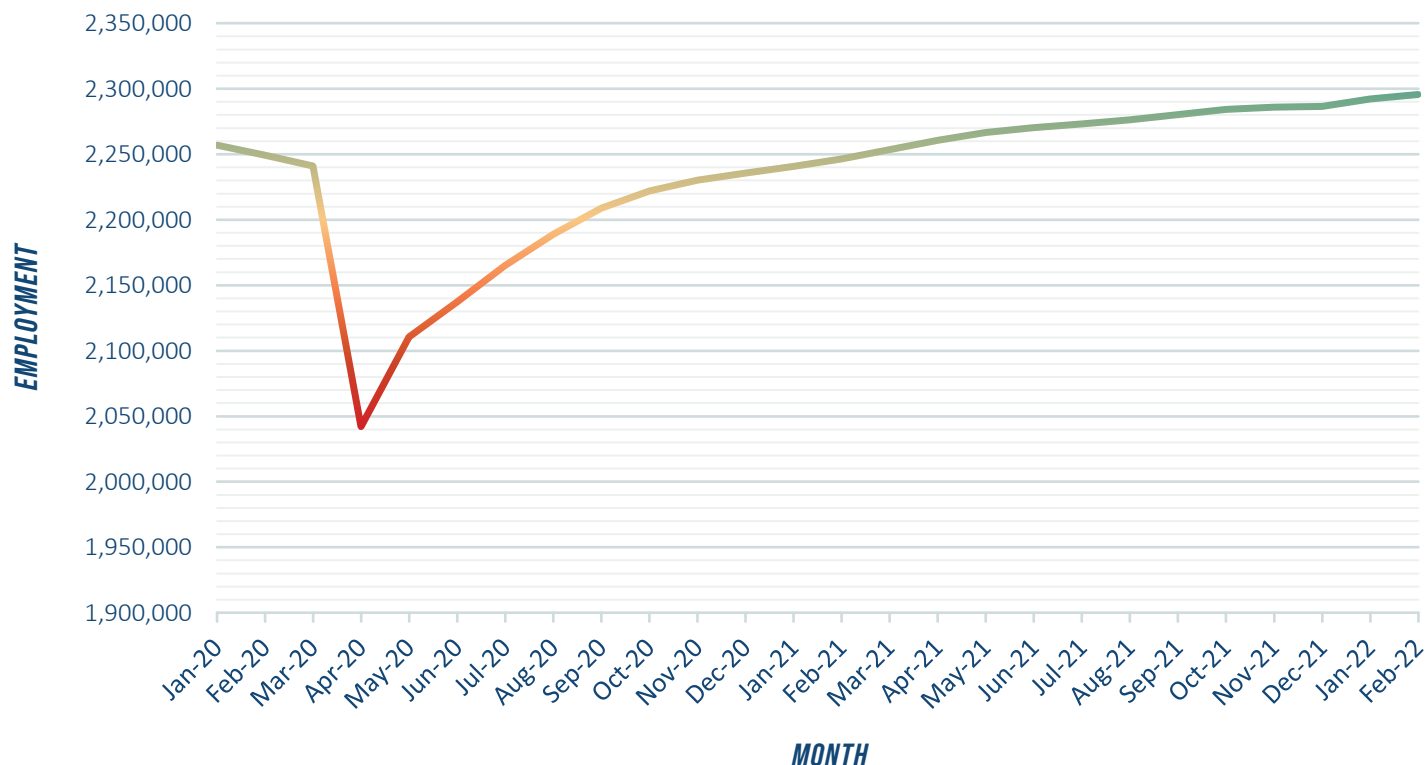
MONTHLY UNEMPLOYMENT RATE SINCE JANUARY 2020



MONTHLY LABOR FORCE PARTICIPATION RATE SINCE JANUARY 2020

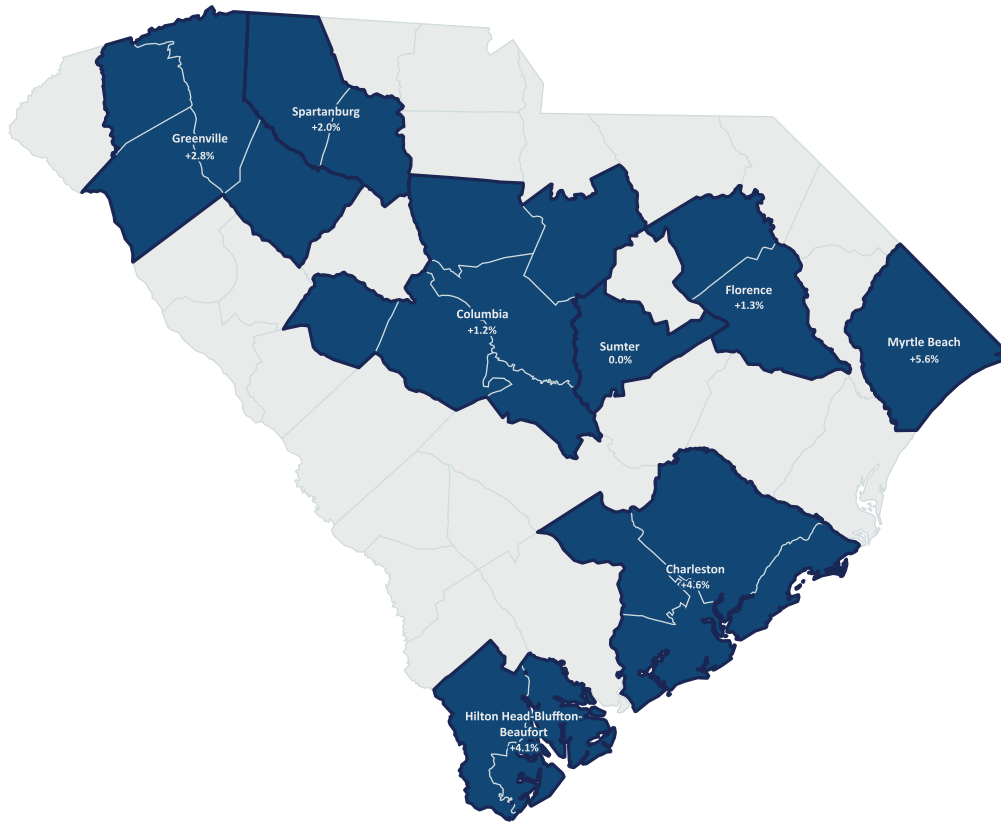


MONTHLY EMPLOYMENT SINCE JANUARY 2020



CURRENT EMPLOYMENT STATISTICS

Seasonally Adjusted



NONFARM PAYROLL BY METROPOLITAN STATISTICAL AREA SEASONALLY ADJUSTED FEBRUARY 2022

AREA	FEBRUARY 2022	JANUARY 2022	FEBRUARY 2021	JANUARY 2022 TO FEBRUARY 2022		FEBRUARY 2021 TO FEBRUARY 2022	
				# CHANGE	% CHANGE	# CHANGE	% CHANGE
Statewide	2,195,900	2,178,400	2,131,200	+17,500	+0.8%	+64,700	+3.0%
Charleston	381,300	380,100	364,500	+1,200	+0.3%	+16,800	+4.6%
Columbia	398,900	395,000	394,300	+3,900	+1.0%	+4,600	+1.2%
Florence	90,500	90,400	89,300	+100	+0.1%	+1,200	+1.3%
Greenville	434,300	431,500	422,600	+2,800	+0.6%	+11,700	+2.8%
Hilton Head-Bluffton-Beaufort	84,400	83,800	81,100	+600	+0.7%	+3,300	+4.1%
Myrtle Beach	179,700	178,800	170,200	+900	+0.5%	+9,500	+5.6%
Spartanburg	166,100	165,700	162,800	+400	+0.2%	+3,300	+2.0%
Sumter	38,200	38,100	38,200	+100	+0.3%	0	0.0%

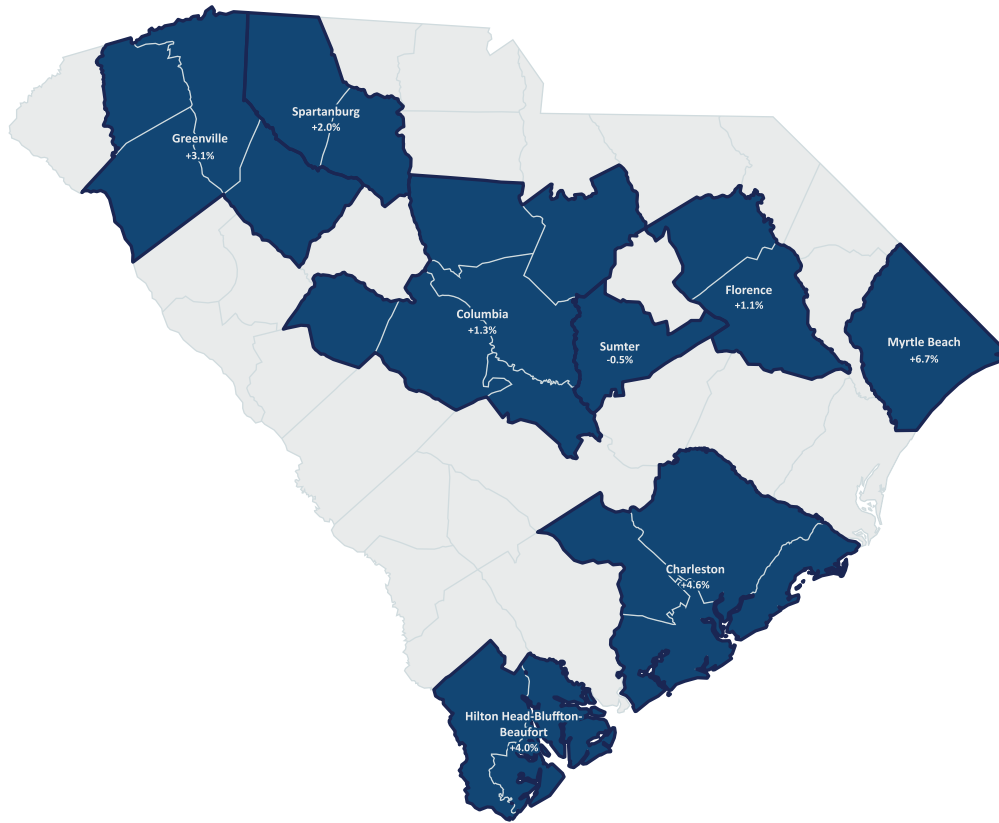
NOTE: Employment estimates have been rounded to the nearest hundred. Sum of detail may not equal totals due to rounding or the exclusion of certain industries from publication. All data are subject to revision.

NONFARM PAYROLL BY ECONOMIC SECTOR
SEASONALLY ADJUSTED
FEBRUARY 2022

	FEBRUARY 2022	JANUARY 2022	FEBRUARY 2021	JANUARY 2022 TO FEBRUARY 2022		FEBRUARY 2021 TO FEBRUARY 2022	
				# CHANGE	% CHANGE	# CHANGE	% CHANGE
Total Nonfarm	2,195,900	2,178,400	2,131,200	+17,500	+0.8%	+64,700	+3.0%
Total Private	1,831,000	1,816,200	1,765,800	+14,800	+0.8%	+65,200	+3.7%
Goods Producing	364,600	363,300	356,400	+1,300	+0.4%	+8,200	+2.3%
Mining, Logging and Construction	109,300	109,000	108,200	+300	+0.3%	+1,100	+1.0%
Mining and Logging	4,500	4,400	4,300	+100	+2.3%	+200	+4.7%
Construction	104,800	104,600	103,900	+200	+0.2%	+900	+0.9%
Manufacturing	255,300	254,300	248,200	+1,000	+0.4%	+7,100	+2.9%
Durable Goods	153,600	152,900	147,800	+700	+0.5%	+5,800	+3.9%
Non-Durable Goods	101,700	101,400	100,400	+300	+0.3%	+1,300	+1.3%
Service-Providing	1,831,300	1,815,100	1,774,800	+16,200	+0.9%	+56,500	+3.2%
Private Service Providing	1,466,400	1,452,900	1,409,400	+13,500	+0.9%	+57,000	+4.0%
Trade, Transportation, and Utilities	427,900	425,900	411,800	+2,000	+0.5%	+16,100	+3.9%
Wholesale Trade	74,400	75,300	72,800	-900	-1.2%	+1,600	+2.2%
Retail Trade	258,700	257,100	252,200	+1,600	+0.6%	+6,500	+2.6%
Transportation, Warehousing, and Utilities	94,800	93,500	86,800	+1,300	+1.4%	+8,000	+9.2%
Information	27,800	28,500	26,700	-700	-2.5%	+1,100	+4.1%
Financial Activities	113,600	112,800	108,100	+800	+0.7%	+5,500	+5.1%
Finance and Insurance	81,000	80,400	77,300	+600	+0.7%	+3,700	+4.8%
Real Estate and Rental and Leasing	32,600	32,400	30,800	+200	+0.6%	+1,800	+5.8%
Professional and Business Services	302,000	294,900	293,700	+7,100	+2.4%	+8,300	+2.8%
Professional, Scientific, and Technical Services	107,200	107,000	103,100	+200	+0.2%	+4,100	+4.0%
Management of Companies and Enterprises	24,200	24,300	23,700	-100	-0.4%	+500	+2.1%
Administrative and Support and Waste Management and Remediation Services	170,600	163,600	166,900	+7,000	+4.3%	+3,700	+2.2%
Education and Health Services	256,500	254,900	253,900	+1,600	+0.6%	+2,600	+1.0%
Educational Services	42,000	42,400	40,100	-400	-0.9%	+1,900	+4.7%
Health Care Services	214,500	212,500	213,800	+2,000	+0.9%	+700	+0.3%
Leisure and Hospitality	258,000	255,800	239,200	+2,200	+0.9%	+18,800	+7.9%
Arts, Entertainment, and Recreation	32,400	32,300	27,900	+100	+0.3%	+4,500	+16.1%
Accommodation and Food Services	225,600	223,500	211,300	+2,100	+0.9%	+14,300	+6.8%
Other Services	80,600	80,100	76,000	+500	+0.6%	+4,600	+6.1%
Government	364,900	362,200	365,400	+2,700	+0.7%	-500	-0.1%
Federal Government	35,800	35,900	36,000	-100	-0.3%	-200	-0.6%
State Government	108,100	105,200	106,700	+2,900	+2.8%	+1,400	+1.3%
Local Government	221,000	221,100	222,700	-100	0.0%	-1,700	-0.8%

CURRENT EMPLOYMENT STATISTICS

Not Seasonally Adjusted



NONFARM PAYROLL BY METROPOLITAN STATISTICAL AREA SEASONALLY ADJUSTED, IN THOUSANDS FEBRUARY 2022

AREA	FEBRUARY 2022	JANUARY 2022	FEBRUARY 2021	JANUARY 2022 TO FEBRUARY 2022		FEBRUARY 2021 TO FEBRUARY 2022	
				# CHANGE	% CHANGE	# CHANGE	% CHANGE
Statewide	2,181,400	2,148,100	2,108,200	+33,300	+1.6%	+73,200	+3.5%
Charleston	378,000	375,000	361,500	+3,000	+0.8%	+16,500	+4.6%
Columbia	398,700	391,500	393,700	+7,200	+1.8%	+5,000	+1.3%
Florence	89,800	89,600	88,800	+200	+0.2%	+1,000	+1.1%
Greenville	433,700	426,800	420,800	+6,900	+1.6%	+12,900	+3.1%
Hilton Head-Bluffton-Beaufort	82,400	81,300	79,200	+1,100	+1.4%	+3,200	+4.0%
Myrtle Beach	172,900	169,500	162,000	+3,400	+2.0%	+10,900	+6.7%
Spartanburg	165,400	164,400	162,200	+1,000	+0.6%	+3,200	+2.0%
Sumter	38,100	37,900	38,300	+200	+0.5%	-200	-0.5%

NOTE: Employment estimates have been rounded to the nearest hundred. Sum of detail may not equal totals due to rounding or the exclusion of certain industries from publication. All data are subject to revision.

NONFARM PAYROLL BY ECONOMIC SECTOR NOT SEASONALLY ADJUSTED FEBRUARY 2022

				JANUARY 2022 TO FEBRUARY 2022		FEBRUARY 2021 TO FEBRUARY 2022	
	FEBRUARY 2022	JANUARY 2022	FEBRUARY 2021	# CHANGE	% CHANGE	# CHANGE	% CHANGE
Total Nonfarm	2,181,400	2,148,100	2,108,200	+33,300	+1.6%	+73,200	+3.5%
Total Private	1,813,000	1,787,000	1,741,600	+26,000	+1.5%	+71,400	+4.1%
Goods Producing	363,700	361,700	355,000	+2,000	+0.6%	+8,700	+2.5%
Mining, Logging and Construction	108,600	108,200	106,800	+400	+0.4%	+1,800	+1.7%
Mining and Logging	4,500	4,400	4,300	+100	+2.3%	+200	+4.7%
Construction	104,100	103,800	102,500	+300	+0.3%	+1,600	+1.6%
Construction of Buildings	24,400	24,700	24,100	-300	-1.2%	+300	+1.2%
Heavy and Civil Engineering Construction	15,800	16,000	15,400	-200	-1.3%	+400	+2.6%
Specialty Trade Contractors	63,900	63,100	63,000	+800	+1.3%	+900	+1.4%
Manufacturing	255,100	253,500	248,200	+1,600	+0.6%	+6,900	+2.8%
Durable Goods	153,100	151,800	147,700	+1,300	+0.9%	+5,400	+3.7%
Fabricated Metal Product Manufacturing	24,000	23,800	23,300	+200	+0.8%	+700	+3.0%
Transportation Equipment Manufacturing	50,000	49,900	49,300	+100	+0.2%	+700	+1.4%
Non-Durable Goods	102,000	101,700	100,500	+300	+0.3%	+1,500	+1.5%
Textile Mills	12,800	12,800	12,800	0	0.0%	0	0.0%
Plastics and Rubber Products Manufacturing	24,500	24,500	24,100	0	0.0%	+400	+1.7%
Service-Providing	1,817,700	1,786,400	1,753,200	+31,300	+1.8%	+64,500	+3.7%
Private Service Providing	1,449,300	1,425,300	1,386,600	+24,000	+1.7%	+62,700	+4.5%
Trade, Transportation, and Utilities	425,000	424,200	406,600	+800	+0.2%	+18,400	+4.5%
Wholesale Trade	74,400	74,500	72,700	-100	-0.1%	+1,700	+2.3%
Merchant Wholesalers, Durable Goods	39,900	40,100	38,800	-200	-0.5%	+1,100	+2.8%
Merchant Wholesalers, Nondurable Goods	21,100	21,100	20,800	0	0.0%	+300	+1.4%
Retail Trade	256,300	256,400	248,100	-100	0.0%	+8,200	+3.3%
Motor Vehicle and Parts Dealers	32,600	32,700	32,200	-100	-0.3%	+400	+1.2%
Food and Beverage Stores	49,700	49,000	50,100	+700	+1.4%	-400	-0.8%
Health and Personal Care Stores	16,200	16,200	15,200	0	0.0%	+1,000	+6.6%
Clothing and Clothing Accessories Stores	16,800	17,000	14,900	-200	-1.2%	+1,900	+12.8%
General Merchandise Stores	59,400	59,200	55,900	+200	+0.3%	+3,500	+6.3%
Transportation, Warehousing, and Utilities	94,300	93,300	85,800	+1,000	+1.1%	+8,500	+9.9%
Utilities	10,900	10,800	11,000	+100	+0.9%	-100	-0.9%
Transportation and Warehousing	83,400	82,500	74,800	+900	+1.1%	+8,600	+11.5%
Information	27,900	28,500	26,400	-600	-2.1%	+1,500	+5.7%
Financial Activities	113,300	112,700	107,200	+600	+0.5%	+6,100	+5.7%
Finance and Insurance	81,000	80,800	77,500	+200	+0.3%	+3,500	+4.5%
Credit Intermediation and Related Activities including Monetary Authorities	38,700	38,500	36,900	+200	+0.5%	+1,800	+4.9%
Real Estate and Rental and Leasing	32,300	31,900	29,700	+400	+1.3%	+2,600	+8.8%
Professional and Business Services	302,200	290,100	291,100	+12,100	+4.2%	+11,100	+3.8%
Professional, Scientific, and Technical Services	109,300	107,100	104,300	+2,200	+2.1%	+5,000	+4.8%
Architectural, Engineering, and Related Services	21,500	21,100	20,500	+400	+1.9%	+1,000	+4.9%
Management of Companies and Enterprises	24,100	24,100	23,700	0	0.0%	+400	+1.7%
Administrative and Support and Waste Management and Remediation Services	168,800	158,900	163,100	+9,900	+6.2%	+5,700	+3.5%
Administrative and Support Services	155,700	146,000	150,700	+9,700	+6.6%	+5,000	+3.3%
Employment Services	74,200	68,300	72,700	+5,900	+8.6%	+1,500	+2.1%
Services to Buildings and Dwellings	37,700	35,900	35,600	+1,800	+5.0%	+2,100	+5.9%
Education and Health Services	256,400	252,100	254,600	+4,300	+1.7%	+1,800	+0.7%
Educational Services	43,000	42,200	40,700	+800	+1.9%	+2,300	+5.7%
Health Care and Social Assistance	213,400	209,900	213,900	+3,500	+1.7%	-500	-0.2%
Ambulatory Health Care Services	102,700	101,300	100,700	+1,400	+1.4%	+2,000	+2.0%
Hospitals	35,900	35,700	37,100	+200	+0.6%	-1,200	-3.2%
Nursing and Residential Care Facilities	37,300	36,600	39,100	+700	+1.9%	-1,800	-4.6%
Leisure and Hospitality	244,300	238,100	225,500	+6,200	+2.6%	+18,800	+8.3%
Arts, Entertainment, and Recreation	29,100	28,900	24,500	+200	+0.7%	+4,600	+18.8%
Amusement, Gambling, and Recreation Industries	24,300	24,200	20,400	+100	+0.4%	+3,900	+19.1%
Accommodation and Food Services	215,200	209,200	201,000	+6,000	+2.9%	+14,200	+7.1%
Accommodation	27,100	26,300	23,100	+800	+3.0%	+4,000	+17.3%
Food Services and Drinking Places	188,100	182,900	177,900	+5,200	+2.8%	+10,200	+5.7%
Other Services	80,200	79,600	75,200	+600	+0.8%	+5,000	+6.7%
Repair and Maintenance	22,800	22,200	20,900	+600	+2.7%	+1,900	+9.1%
Personal and Laundry Services	18,900	18,700	17,500	+200	+1.1%	+1,400	+8.0%
Government	368,400	361,100	366,600	+7,300	+2.0%	+1,800	+0.5%
Federal Government	35,600	35,800	35,900	-200	-0.6%	-300	-0.8%
State Government	111,100	104,300	107,100	+6,800	+6.5%	+4,000	+3.7%
State Government Educational Services	55,200	48,600	51,200	+6,600	+13.6%	+4,000	+7.8%
State Government Excluding Education	55,900	55,700	55,900	+200	+0.4%	0	0.0%
Local Government	221,700	221,000	223,600	+700	+0.3%	-1,900	-0.9%
Local Government Educational Services	110,100	109,400	107,800	+700	+0.6%	+2,300	+2.1%
Local Government excluding Educational Services	111,600	111,600	115,800	0	0.0%	-4,200	-3.6%

TOTAL PRIVATE NSA STATEWIDE HOURS AND EARNINGS BY MSA

AVERAGE WEEKLY EARNINGS (AWE)

AREA	FEBRUARY 2022	JANUARY 2022	FEBRUARY 2021	JANUARY 2022 TO FEBRUARY 2022		FEBRUARY 2021 TO FEBRUARY 2022	
				# CHANGE	% CHANGE	# CHANGE	% CHANGE
Charleston	\$1,031.81	\$1,024.13	\$992.48	+\$7.68	+0.8%	+\$39.33	+4.0%
Columbia	\$860.05	\$863.86	\$878.23	-\$3.81	-0.4%	-\$18.18	-2.1%
Florence	\$725.12	\$712.86	\$750.05	+\$12.26	+1.7%	-\$24.93	-3.3%
Greenville	\$1,018.50	\$980.84	\$1,043.77	+\$37.66	+3.8%	-\$25.27	-2.4%
Hilton Head	\$831.57	\$806.36	\$829.29	+\$25.21	+3.1%	+\$2.28	+0.3%
Myrtle Beach	\$786.67	\$791.18	\$691.30	-\$4.51	-0.6%	+\$95.37	+13.8%
Spartanburg	\$1,030.54	\$1,033.90	\$981.15	-\$3.36	-0.3%	+\$49.39	+5.0%
Sumter	\$700.81	\$707.42	\$641.68	-\$6.61	-0.9%	+\$59.13	+9.2%

AVERAGE WEEKLY HOURS (AWH)

AREA	FEBRUARY 2022	JANUARY 2022	FEBRUARY 2021	JANUARY 2022 TO FEBRUARY 2022		FEBRUARY 2021 TO FEBRUARY 2022	
				# CHANGE	% CHANGE	# CHANGE	% CHANGE
Charleston	34.2	33.6	34.2	+0.6	+1.8%	0.0	0.0%
Columbia	33.4	33.6	34.4	-0.2	-0.6%	-1.0	-2.9%
Florence	32.9	32.3	33.1	+0.6	+1.9%	-0.2	-0.6%
Greenville	35.0	34.5	37.0	+0.5	+1.5%	-2.0	-5.4%
Hilton Head	31.8	29.7	33.0	+2.1	+7.1%	-1.2	-3.6%
Myrtle Beach	32.4	31.8	30.4	+0.6	+1.9%	+2.0	+6.6%
Spartanburg	36.7	35.8	35.9	+0.9	+2.5%	+0.8	+2.2%
Sumter	30.9	31.0	30.6	-0.1	-0.3%	+0.3	+1.0%

AVERAGE HOURLY EARNINGS (AHE)

AREA	FEBRUARY 2022	JANUARY 2022	FEBRUARY 2021	JANUARY 2022 TO FEBRUARY 2022		FEBRUARY 2021 TO FEBRUARY 2022	
				# CHANGE	% CHANGE	# CHANGE	% CHANGE
Charleston	\$30.17	\$30.48	\$29.02	-\$0.31	-1.0%	+\$1.15	+4.0%
Columbia	\$25.75	\$25.71	\$25.53	+\$0.04	+0.2%	+\$0.22	+0.9%
Florence	\$22.04	\$22.07	\$22.66	-\$0.03	-0.1%	-\$0.62	-2.7%
Greenville	\$29.10	\$28.43	\$28.21	+\$0.67	+2.4%	+\$0.89	+3.2%
Hilton Head	\$26.15	\$27.15	\$25.13	-\$1.00	-3.7%	+\$1.02	+4.1%
Myrtle Beach	\$24.28	\$24.88	\$22.74	-\$0.60	-2.4%	+\$1.54	+6.8%
Spartanburg	\$28.08	\$28.88	\$27.33	-\$0.80	-2.8%	+\$0.75	+2.7%
Sumter	\$22.68	\$22.82	\$20.97	-\$0.14	-0.6%	+\$1.71	+8.2%

NSA STATEWIDE HOURS AND EARNINGS BY INDUSTRY

AVERAGE WEEKLY EARNINGS (AWE)

PUBLISH INDUSTRY TITLE	FEBRUARY 2022	JANUARY 2022	FEBRUARY 2021	JANUARY 2022 TO FEBRUARY 2022		FEBRUARY 2021 TO FEBRUARY 2022	
				# CHANGE	% CHANGE	# CHANGE	% CHANGE
Total Private	\$930.05	\$938.54	\$945.99	-\$8.49	-0.9%	-\$15.94	-1.7%
Goods Producing	\$1,231.80	\$1,188.40	\$1,172.60	+\$43.40	+3.7%	+\$59.20	+5.1%
Construction	\$1,190.32	\$1,187.11	\$1,136.42	+\$3.21	+0.3%	+\$53.90	+4.7%
Manufacturing	\$1,275.54	\$1,208.48	\$1,179.68	+\$67.06	+5.6%	+\$95.86	+8.1%
Private Service Providing	\$854.60	\$874.18	\$887.70	-\$19.58	-2.2%	-\$33.10	-3.7%
Trade, Transportation, and Utilities	\$844.31	\$829.46	\$808.42	+\$14.85	+1.8%	+\$35.89	+4.4%
Financial Activities	\$1,161.06	\$1,185.73	\$1,292.63	-\$24.67	-2.1%	-\$131.57	-10.2%
Professional and Business Services	\$1,125.61	\$1,146.68	\$1,114.60	-\$21.07	-1.8%	+\$11.01	+1.0%
Education and Health Services	\$973.27	\$1,001.91	\$921.24	-\$28.64	-2.9%	+\$52.03	+5.7%
Leisure and Hospitality	\$403.00	\$368.42	\$358.93	+\$34.58	+9.4%	+\$44.07	+12.3%
Other Services	\$775.09	\$736.36	\$831.72	+\$38.73	+5.3%	-\$56.63	-6.8%

AVERAGE WEEKLY HOURS (AWH)

PUBLISH INDUSTRY TITLE	FEBRUARY 2022	JANUARY 2022	FEBRUARY 2021	JANUARY 2022 TO FEBRUARY 2022		FEBRUARY 2021 TO FEBRUARY 2022	
				# CHANGE	% CHANGE	# CHANGE	% CHANGE
Total Private	33.6	33.4	34.3	+0.2	+0.6%	-0.7	-2.0%
Goods Producing	40.4	39.6	40.9	+0.8	+2.0%	-0.5	-1.2%
Construction	40.2	40.2	41.1	0.0	0.0%	-0.9	-2.2%
Manufacturing	40.7	39.3	40.4	+1.4	+3.6%	+0.3	+0.7%
Private Service Providing	31.9	31.8	32.6	+0.1	+0.3%	-0.7	-2.2%
Trade, Transportation, and Utilities	32.7	32.1	33.6	+0.6	+1.9%	-0.9	-2.7%
Financial Activities	37.0	38.2	37.5	-1.2	-3.1%	-0.5	-1.3%
Professional and Business Services	37.1	37.4	36.2	-0.3	-0.8%	+0.9	+2.5%
Education and Health Services	31.9	31.3	32.2	+0.6	+1.9%	-0.3	-0.9%
Leisure and Hospitality	24.8	23.2	24.5	+1.6	+6.9%	+0.3	+1.2%
Other Services	34.1	32.8	34.8	+1.3	+4.0%	-0.7	-2.0%

AVERAGE HOURLY EARNINGS (AHE)

PUBLISH INDUSTRY TITLE	FEBRUARY 2022	JANUARY 2022	FEBRUARY 2021	JANUARY 2022 TO FEBRUARY 2022		FEBRUARY 2021 TO FEBRUARY 2022	
				# CHANGE	% CHANGE	# CHANGE	% CHANGE
Total Private	\$27.68	\$28.10	\$27.58	-\$0.42	-1.5%	+\$0.10	+0.4%
Goods Producing	\$30.49	\$30.01	\$28.67	+\$0.48	+1.6%	+\$1.82	+6.4%
Private Service Providing	\$26.79	\$27.49	\$27.23	-\$0.70	-2.6%	-\$0.44	-1.6%
Construction	\$29.61	\$29.53	\$27.65	+\$0.08	+0.3%	+\$1.96	+7.1%
Manufacturing	\$31.34	\$30.75	\$29.20	+\$0.59	+1.9%	+\$2.14	+7.3%
Trade, Transportation, and Utilities	\$25.82	\$25.84	\$24.06	-\$0.02	-0.1%	+\$1.76	+7.3%
Financial Activities	\$31.38	\$31.04	\$34.47	+\$0.34	+1.1%	-\$3.09	-9.0%
Professional and Business Services	\$30.34	\$30.66	\$30.79	-\$0.32	-1.0%	-\$0.45	-1.5%
Education and Health Services	\$30.51	\$32.01	\$28.61	-\$1.50	-4.7%	+\$1.90	+6.6%
Leisure and Hospitality	\$16.25	\$15.88	\$14.65	+\$0.37	+2.3%	+\$1.60	+10.9%
Other Services	\$22.73	\$22.45	\$23.90	+\$0.28	+1.3%	-\$1.17	-4.9%

NONFARM PAYROLL BY ECONOMIC SECTOR
CHARLESTON-NORTH CHARLESTON MSA
FEBRUARY 2022 (NOT SEASONALLY ADJUSTED)

	FEBRUARY 2022	JANUARY 2022	FEBRUARY 2021	JANUARY 2022 TO FEBRUARY 2022		FEBRUARY 2021 TO FEBRUARY 2022	
				# CHANGE	% CHANGE	# CHANGE	% CHANGE
Total Nonfarm	378,000	375,000	361,500	+3,000	+0.8%	+16,500	+4.6%
Total Private	308,200	305,400	294,900	+2,800	+0.9%	+13,300	+4.5%
Goods Producing	50,000	49,500	49,500	+500	+1.0%	+500	+1.0%
Mining, Logging and Construction	21,600	21,300	21,100	+300	+1.4%	+500	+2.4%
Manufacturing	28,400	28,200	28,400	+200	+0.7%	0	0.0%
Service-Providing	328,000	325,500	312,000	+2,500	+0.8%	+16,000	+5.1%
Private Service Providing	258,200	255,900	245,400	+2,300	+0.9%	+12,800	+5.2%
Trade, Transportation, and Utilities	68,500	68,400	67,200	+100	+0.2%	+1,300	+1.9%
Wholesale Trade	11,000	11,000	10,600	0	0.0%	+400	+3.8%
Retail Trade	41,200	41,200	41,300	0	0.0%	-100	-0.2%
General Merchandise Stores	7,700	7,800	7,500	-100	-1.3%	+200	+2.7%
Transportation, Warehousing, and Utilities	16,300	16,200	15,300	+100	+0.6%	+1,000	+6.5%
Information	7,400	7,500	6,900	-100	-1.3%	+500	+7.3%
Financial Activities	16,500	16,700	16,100	-200	-1.2%	+400	+2.5%
Professional and Business Services	58,800	56,900	56,300	+1,900	+3.3%	+2,500	+4.4%
Administrative and Support and Waste Management and Remediation Services	25,400	25,100	25,300	+300	+1.2%	+100	+0.4%
Education and Health Services	42,500	43,000	42,800	-500	-1.2%	-300	-0.7%
Leisure and Hospitality	49,200	48,300	41,600	+900	+1.9%	+7,600	+18.3%
Accommodation and Food Services	44,200	43,300	37,000	+900	+2.1%	+7,200	+19.5%
Food Services and Drinking Places	36,200	35,100	31,300	+1,100	+3.1%	+4,900	+15.7%
Other Services	15,300	15,100	14,500	+200	+1.3%	+800	+5.5%
Government	69,800	69,600	66,600	+200	+0.3%	+3,200	+4.8%
Federal Government	11,700	11,700	11,800	0	0.0%	-100	-0.9%
State Government	29,900	29,800	26,800	+100	+0.3%	+3,100	+11.6%
Local Government	28,200	28,100	28,000	+100	+0.4%	+200	+0.7%

NONFARM PAYROLL BY ECONOMIC SECTOR
COLUMBIA MSA
FEBRUARY 2022 (NOT SEASONALLY ADJUSTED)

	FEBRUARY 2022	JANUARY 2022	FEBRUARY 2021	JANUARY 2022 TO FEBRUARY 2022		FEBRUARY 2021 TO FEBRUARY 2022	
				# CHANGE	% CHANGE	# CHANGE	% CHANGE
Total Nonfarm	398,700	391,500	393,700	+7,200	+1.8%	+5,000	+1.3%
Total Private	320,900	315,600	311,800	+5,300	+1.7%	+9,100	+2.9%
Goods Producing	48,500	48,300	47,800	+200	+0.4%	+700	+1.5%
Mining, Logging and Construction	16,300	16,300	16,600	0	0.0%	-300	-1.8%
Manufacturing	32,200	32,000	31,200	+200	+0.6%	+1,000	+3.2%
Service-Providing	350,200	343,200	345,900	+7,000	+2.0%	+4,300	+1.2%
Private Service Providing	272,400	267,300	264,000	+5,100	+1.9%	+8,400	+3.2%
Trade, Transportation, and Utilities	74,900	75,100	73,500	-200	-0.3%	+1,400	+1.9%
Wholesale Trade	15,100	15,200	14,600	-100	-0.7%	+500	+3.4%
Retail Trade	43,100	43,200	42,200	-100	-0.2%	+900	+2.1%
Transportation, Warehousing, and Utilities	16,700	16,700	16,700	0	0.0%	0	0.0%
Information	5,100	5,200	4,800	-100	-1.9%	+300	+6.3%
Financial Activities	34,700	34,400	32,500	+300	+0.9%	+2,200	+6.8%
Credit Intermediation and Related Activities including Monetary Authorities - Central Bank	7,500	7,500	7,200	0	0.0%	+300	+4.2%
Professional and Business Services	51,900	49,700	52,500	+2,200	+4.4%	-600	-1.1%
Administrative and Support and Waste Management and Remediation Services	29,300	27,700	30,100	+1,600	+5.8%	-800	-2.7%
Education and Health Services	51,700	50,000	51,100	+1,700	+3.4%	+600	+1.2%
Leisure and Hospitality	37,700	36,700	34,200	+1,000	+2.7%	+3,500	+10.2%
Food Services and Drinking Places	31,500	30,800	29,600	+700	+2.3%	+1,900	+6.4%
Other Services	16,400	16,200	15,400	+200	+1.2%	+1,000	+6.5%
Government	77,800	75,900	81,900	+1,900	+2.5%	-4,100	-5.0%
Federal Government	11,000	11,000	11,200	0	0.0%	-200	-1.8%
State Government	32,800	30,900	34,100	+1,900	+6.2%	-1,300	-3.8%
Local Government	34,000	34,000	36,600	0	0.0%	-2,600	-7.1%

NONFARM PAYROLL BY ECONOMIC SECTOR
GREENVILLE-ANDERSON-MAULDIN MSA
FEBRUARY 2022 (NOT SEASONALLY ADJUSTED)

	FEBRUARY 2022	JANUARY 2022	FEBRUARY 2021	JANUARY 2022 TO FEBRUARY 2022		FEBRUARY 2021 TO FEBRUARY 2022	
				# CHANGE	% CHANGE	# CHANGE	% CHANGE
Total Nonfarm	433,700	426,800	420,800	+6,900	+1.6%	+12,900	+3.1%
Total Private	372,200	366,800	359,600	+5,400	+1.5%	+12,600	+3.5%
Goods Producing	79,600	78,600	75,700	+1,000	+1.3%	+3,900	+5.2%
Mining, Logging and Construction	19,700	19,800	19,400	-100	-0.5%	+300	+1.6%
Manufacturing	59,900	58,800	56,300	+1,100	+1.9%	+3,600	+6.4%
Service-Providing	354,100	348,200	345,100	+5,900	+1.7%	+9,000	+2.6%
Private Service Providing	292,600	288,200	283,900	+4,400	+1.5%	+8,700	+3.1%
Trade, Transportation, and Utilities	80,000	79,400	76,700	+600	+0.8%	+3,300	+4.3%
Wholesale Trade	18,900	18,800	18,400	+100	+0.5%	+500	+2.7%
Retail Trade	47,100	46,600	45,200	+500	+1.1%	+1,900	+4.2%
Transportation, Warehousing, and Utilities	14,000	14,000	13,100	0	0.0%	+900	+6.9%
Information	6,600	6,700	6,600	-100	-1.5%	0	0.0%
Financial Activities	21,300	21,200	19,900	+100	+0.5%	+1,400	+7.0%
Professional and Business Services	73,800	71,700	74,000	+2,100	+2.9%	-200	-0.3%
Professional, Scientific, and Technical Services	24,700	24,000	23,300	+700	+2.9%	+1,400	+6.0%
Management of Companies and Enterprises	5,700	5,700	5,500	0	0.0%	+200	+3.6%
Administrative and Support and Waste Management and Remediation Services	43,400	42,000	45,200	+1,400	+3.3%	-1,800	-4.0%
Education and Health Services	54,400	53,100	52,800	+1,300	+2.5%	+1,600	+3.0%
Educational Services	11,900	11,400	10,800	+500	+4.4%	+1,100	+10.2%
Health Care and Social Assistance	42,500	41,700	42,000	+800	+1.9%	+500	+1.2%
Leisure and Hospitality	41,600	41,300	40,000	+300	+0.7%	+1,600	+4.0%
Other Services	14,900	14,800	13,900	+100	+0.7%	+1,000	+7.2%
Government	61,500	60,000	61,200	+1,500	+2.5%	+300	+0.5%
Federal Government	3,000	3,000	2,900	0	0.0%	+100	+3.5%
State Government	14,800	13,400	14,700	+1,400	+10.5%	+100	+0.7%
Local Government	43,700	43,600	43,600	+100	+0.2%	+100	+0.2%

NONFARM PAYROLL BY ECONOMIC SECTOR
MYRTLE BEACH-CONWAY-NORTH MYRTLE BEACH MSA
FEBRUARY 2022 (NOT SEASONALLY ADJUSTED)

	FEBRUARY 2022	JANUARY 2022	FEBRUARY 2021	JANUARY 2022 TO FEBRUARY 2022		FEBRUARY 2021 TO FEBRUARY 2022	
				# CHANGE	% CHANGE	# CHANGE	% CHANGE
Total Nonfarm	172,900	169,500	162,000	+3,400	+2.0%	+10,900	+6.7%
Total Private	148,900	145,800	138,900	+3,100	+2.1%	+10,000	+7.2%
Goods Producing	15,700	15,700	15,300	0	0.0%	+400	+2.6%
Mining, Logging and Construction	10,800	10,800	10,800	0	0.0%	0	0.0%
Manufacturing	4,900	4,900	4,500	0	0.0%	+400	+8.9%
Service-Providing	157,200	153,800	146,700	+3,400	+2.2%	+10,500	+7.2%
Private Service Providing	133,200	130,100	123,600	+3,100	+2.4%	+9,600	+7.8%
Trade, Transportation, and Utilities	40,300	40,000	36,900	+300	+0.8%	+3,400	+9.2%
Wholesale Trade	3,400	3,400	3,200	0	0.0%	+200	+6.3%
Retail Trade	32,200	31,900	29,300	+300	+0.9%	+2,900	+9.9%
Transportation, Warehousing, and Utilities	4,700	4,700	4,400	0	0.0%	+300	+6.8%
Information	2,400	2,400	2,300	0	0.0%	+100	+4.4%
Financial Activities	9,800	9,700	8,800	+100	+1.0%	+1,000	+11.4%
Professional and Business Services	17,200	16,600	15,800	+600	+3.6%	+1,400	+8.9%
Education and Health Services	19,700	19,700	19,700	0	0.0%	0	0.0%
Leisure and Hospitality	37,100	35,000	33,700	+2,100	+6.0%	+3,400	+10.1%
Accommodation and Food Services	31,300	29,200	29,000	+2,100	+7.2%	+2,300	+7.9%
Food Services and Drinking Places	24,000	22,300	22,800	+1,700	+7.6%	+1,200	+5.3%
Other Services	6,700	6,700	6,400	0	0.0%	+300	+4.7%
Government	24,000	23,700	23,100	+300	+1.3%	+900	+3.9%
Federal Government	1,400	1,400	1,400	0	0.0%	0	0.0%
State Government	5,100	4,800	4,700	+300	+6.3%	+400	+8.5%
Local Government	17,500	17,500	17,000	0	0.0%	+500	+2.9%

NONFARM PAYROLL BY ECONOMIC SECTOR
SPARTANBURG MSA
FEBRUARY 2022 (NOT SEASONALLY ADJUSTED)

				JANUARY 2022 TO FEBRUARY 2022		FEBRUARY 2021 TO FEBRUARY 2022	
	FEBRUARY 2022	JANUARY 2022	FEBRUARY 2021	# CHANGE	% CHANGE	# CHANGE	% CHANGE
Total Nonfarm	165,400	164,400	162,200	+1,000	+0.6%	+3,200	+2.0%
Total Private	138,400	137,500	136,100	+900	+0.7%	+2,300	+1.7%
Goods Producing	44,800	44,800	44,200	0	0.0%	+600	+1.4%
Mining, Logging and Construction	7,200	7,200	7,200	0	0.0%	0	0.0%
Manufacturing	37,600	37,600	37,000	0	0.0%	+600	+1.6%
Durable Goods	26,300	26,200	25,300	+100	+0.4%	+1,000	+4.0%
Non-Durable Goods	11,300	11,400	11,700	-100	-0.9%	-400	-3.4%
Service-Providing	120,600	119,600	118,000	+1,000	+0.8%	+2,600	+2.2%
Private Service Providing	93,600	92,700	91,900	+900	+1.0%	+1,700	+1.9%
Trade, Transportation, and Utilities	36,400	36,500	35,600	-100	-0.3%	+800	+2.3%
Wholesale Trade	8,100	8,100	8,100	0	0.0%	0	0.0%
Retail Trade	15,900	16,000	16,100	-100	-0.6%	-200	-1.2%
Transportation, Warehousing, and Utilities	12,400	12,400	11,400	0	0.0%	+1,000	+8.8%
Information	700	700	600	0	0.0%	+100	+16.7%
Financial Activities	5,000	5,000	5,000	0	0.0%	0	0.0%
Professional and Business Services	18,300	17,500	17,400	+800	+4.6%	+900	+5.2%
Education and Health Services	14,600	14,600	15,200	0	0.0%	-600	-4.0%
Leisure and Hospitality	13,400	13,200	13,100	+200	+1.5%	+300	+2.3%
Other Services	5,200	5,200	5,000	0	0.0%	+200	+4.0%
Government	27,000	26,900	26,100	+100	+0.4%	+900	+3.5%
Federal Government	600	700	600	-100	-14.3%	0	0.0%
State Government	4,000	3,900	3,900	+100	+2.6%	+100	+2.6%
Local Government	22,400	22,300	21,600	+100	+0.5%	+800	+3.7%

**NONFARM PAYROLL BY ECONOMIC SECTOR
FLORENCE MSA
FEBRUARY 2022 (NOT SEASONALLY ADJUSTED)**

	FEBRUARY 2022	JANUARY 2022	FEBRUARY 2021	JANUARY 2022 TO FEBRUARY 2022		FEBRUARY 2021 TO FEBRUARY 2022	
				# CHANGE	% CHANGE	# CHANGE	% CHANGE
Total Nonfarm	89,800	89,600	88,800	+200	+0.2%	+1,000	+1.1%
Total Private	73,100	73,000	71,600	+100	+0.1%	+1,500	+2.1%
Goods Producing	13,700	13,700	13,900	0	0.0%	-200	-1.4%
Service-Providing	76,100	75,900	74,900	+200	+0.3%	+1,200	+1.6%
Private Service Providing	59,400	59,300	57,700	+100	+0.2%	+1,700	+3.0%
Trade, Transportation, and Utilities	19,700	19,900	18,800	-200	-1.0%	+900	+4.8%
Government	16,700	16,600	17,200	+100	+0.6%	-500	-2.9%
Federal Government	700	700	700	0	0.0%	0	0.0%
State Government	4,300	4,200	4,600	+100	+2.4%	-300	-6.5%
Local Government	11,700	11,700	11,900	0	0.0%	-200	-1.7%

**HILTON HEAD ISLAND-BLUFFTON MSA
FEBRUARY 2022 (NOT SEASONALLY ADJUSTED)**

	FEBRUARY 2022	JANUARY 2022	FEBRUARY 2021	JANUARY 2022 TO FEBRUARY 2022		FEBRUARY 2021 TO FEBRUARY 2022	
				# CHANGE	% CHANGE	# CHANGE	% CHANGE
Total Nonfarm	82,400	81,300	79,200	+1,100	+1.4%	+3,200	+4.0%
Total Private	70,800	69,900	67,700	+900	+1.3%	+3,100	+4.6%
Goods Producing	6,800	6,700	6,600	+100	+1.5%	+200	+3.0%
Service-Providing	75,600	74,600	72,600	+1,000	+1.3%	+3,000	+4.1%
Private Service Providing	64,000	63,200	61,100	+800	+1.3%	+2,900	+4.8%
Government	11,600	11,400	11,500	+200	+1.8%	+100	+0.9%

**SUMTER MSA
FEBRUARY 2022 (NOT SEASONALLY ADJUSTED)**

	FEBRUARY 2022	JANUARY 2022	FEBRUARY 2021	JANUARY 2022 TO FEBRUARY 2022		FEBRUARY 2021 TO FEBRUARY 2022	
				# CHANGE	% CHANGE	# CHANGE	% CHANGE
Total Nonfarm	38,100	37,900	38,300	+200	+0.5%	-200	-0.5%
Total Private	31,900	31,800	31,900	+100	+0.3%	0	0.0%
Goods Producing	9,100	9,100	9,200	0	0.0%	-100	-1.1%
Service-Providing	29,000	28,800	29,100	+200	+0.7%	-100	-0.3%
Private Service Providing	22,800	22,700	22,700	+100	+0.4%	+100	+0.4%
Manufacturing	6,500	6,500	6,700	0	0.0%	-200	-3.0%
Government	6,200	6,100	6,400	+100	+1.6%	-200	-3.1%
Federal Government	1,300	1,300	1,400	0	0.0%	-100	-7.1%
State Government	1,400	1,300	1,500	+100	+7.7%	-100	-6.7%
Local Government	3,500	3,500	3,500	0	0.0%	0	0.0%

LONG-RUN TRENDS

ANNUAL LOCAL AREA UNEMPLOYMENT STATISTICS DATA 1976-2021

YEAR	CIVILIAN NONINSTITUTIONAL POPULATION	LABOR FORCE PARTICIPATION RATE (PERCENT)	EMPLOYMENT-POPULATION RATIO (PERCENT)	LABOR FORCE	EMPLOYMENT	UNEMPLOYMENT	UNEMPLOYMENT RATE (PERCENT)
1976	2,007,417	64.7	60.2	1,299,241	1,207,662	91,579	7.0
1977	2,061,250	64.4	60.0	1,327,423	1,237,495	89,928	6.8
1978	2,117,667	64.1	60.5	1,356,921	1,281,597	75,324	5.6
1979	2,169,417	63.4	60.2	1,375,201	1,306,773	68,428	5.0
1980	2,221,250	62.8	58.6	1,395,675	1,301,796	93,879	6.7
1981	2,266,583	63.2	58.0	1,432,219	1,314,907	117,312	8.2
1982	2,307,333	64.2	57.3	1,482,373	1,322,883	159,490	10.8
1983	2,341,083	63.2	56.9	1,479,137	1,333,162	145,975	9.9
1984	2,378,500	62.9	58.5	1,495,188	1,391,286	103,902	6.9
1985	2,426,500	63.8	59.5	1,548,924	1,443,612	105,312	6.8
1986	2,455,333	64.9	60.7	1,592,306	1,491,069	101,237	6.4
1987	2,495,333	65.4	61.8	1,631,897	1,542,170	89,727	5.5
1988	2,533,000	65.6	62.5	1,660,533	1,583,928	76,605	4.6
1989	2,566,000	66.0	62.9	1,693,438	1,615,009	78,429	4.6
1990	2,611,843	66.5	63.3	1,737,831	1,652,949	84,882	4.9
1991	2,663,759	66.3	62.3	1,767,123	1,659,196	107,927	6.1
1992	2,699,745	66.7	62.2	1,799,677	1,678,803	120,874	6.7
1993	2,739,480	66.7	61.8	1,826,650	1,693,483	133,167	7.3
1994	2,775,049	66.4	62.3	1,841,428	1,727,714	113,714	6.2
1995	2,813,952	66.2	62.8	1,864,221	1,768,540	95,681	5.1
1996	2,851,104	66.2	62.4	1,886,064	1,779,221	106,843	5.7
1997	2,897,839	66.3	63.3	1,920,244	1,834,337	85,907	4.5
1998	2,945,825	65.9	63.5	1,940,846	1,870,270	70,576	3.6
1999	2,989,560	65.5	62.8	1,958,598	1,877,345	81,253	4.1
2000	3,027,367	64.9	62.5	1,965,481	1,892,559	72,922	3.7
2001	3,064,191	63.4	60.0	1,941,956	1,839,246	102,710	5.3
2002	3,098,739	63.1	59.0	1,954,548	1,828,735	125,813	6.4
2003	3,133,915	63.8	59.2	1,999,485	1,855,599	143,886	7.2
2004	3,178,645	64.3	59.5	2,043,864	1,891,722	152,142	7.4
2005	3,234,049	64.0	59.4	2,071,111	1,919,644	151,467	7.3
2006	3,305,437	65.0	60.5	2,148,698	2,001,245	147,453	6.9
2007	3,374,548	63.9	60.0	2,155,198	2,024,493	130,705	6.1
2008	3,439,974	62.8	58.2	2,160,084	2,002,903	157,181	7.3
2009	3,490,448	62.1	55.0	2,166,737	1,919,307	247,430	11.4
2010	3,564,619	61.0	54.1	2,174,535	1,928,442	246,093	11.3
2011	3,612,048	60.5	54.2	2,185,171	1,957,493	227,678	10.4
2012	3,655,515	59.9	54.5	2,190,203	1,992,957	197,246	9.0
2013	3,704,281	59.3	54.9	2,197,876	2,034,404	163,472	7.4
2014	3,759,002	59.1	55.4	2,222,426	2,082,941	139,485	6.3
2015	3,822,409	59.3	55.8	2,267,837	2,134,087	133,750	5.9
2016	3,888,005	58.8	55.9	2,286,054	2,174,301	111,753	4.9
2017	3,897,645	58.0	55.6	2,261,766	2,166,708	95,058	4.2
2018	3,948,448	57.7	55.8	2,279,431	2,202,377	77,054	3.4
2019	4,002,601	58.0	56.4	2,321,189	2,256,313	64,876	2.8
2020	4,058,279	57.4	54.0	2,330,863	2,191,331	139,532	6.0
2021	4,117,555	57.4	55.1	2,364,366	2,269,813	94,553	4.0

ANNUAL CURRENT EMPLOYMENT STATISTICS NONFARM PAYROLL 1939-2021

YEAR	EMPLOYMENT	YEAR	EMPLOYMENT	YEAR	EMPLOYMENT	YEAR	EMPLOYMENT
1939	310,100	1960	582,500	1981	1,196,500	2002	1,795,400
1940	328,600	1961	587,000	1982	1,162,300	2003	1,799,100
1941	387,500	1962	609,800	1983	1,189,000	2004	1,826,600
1942	416,500	1963	630,600	1984	1,262,500	2005	1,862,900
1943	428,500	1964	651,500	1985	1,296,200	2006	1,905,700
1944	408,600	1965	686,000	1986	1,338,000	2007	1,945,000
1945	396,000	1966	734,900	1987	1,392,200	2008	1,926,300
1946	411,600	1967	754,500	1988	1,449,000	2009	1,814,400
1947	436,200	1968	782,900	1989	1,499,700	2010	1,811,300
1948	456,400	1969	819,800	1990	1,527,600	2011	1,832,500
1949	443,100	1970	842,000	1991	1,497,300	2012	1,864,300
1950	461,400	1971	862,600	1992	1,511,800	2013	1,901,000
1951	505,800	1972	920,300	1993	1,553,000	2014	1,951,300
1952	544,300	1973	984,000	1994	1,592,000	2015	2,006,700
1953	543,900	1974	1,015,800	1995	1,636,300	2016	2,055,300
1954	519,700	1975	982,600	1996	1,669,400	2017	2,096,100
1955	533,000	1976	1,038,100	1997	1,718,800	2018	2,154,800
1956	542,900	1977	1,081,700	1998	1,779,800	2019	2,189,600
1957	545,000	1978	1,137,500	1999	1,826,300	2020	2,081,600
1958	545,900	1979	1,176,000	2000	1,854,000	2021	2,146,300
1959	566,900	1980	1,188,800	2001	1,814,800		

ANNUAL CURRENT EMPLOYMENT STATISTICS NONFARM PAYROLL 2007-2021

	AVERAGE WEEKLY EARNINGS	AVERAGE WEEKLY HOURS	AVERAGE HOURLY EARNINGS
2007	\$675.36	36.0	\$18.76
2008	\$669.28	35.6	\$18.80
2009	\$665.55	34.7	\$19.18
2010	\$692.17	34.8	\$19.89
2011	\$716.18	34.8	\$20.58
2012	\$705.16	35.1	\$20.09
2013	\$716.15	34.9	\$20.52
2014	\$726.23	34.5	\$21.05
2015	\$743.27	34.7	\$21.42
2016	\$762.80	34.5	\$22.11
2017	\$791.99	34.6	\$22.89
2018	\$829.36	34.6	\$23.97
2019	\$852.84	34.5	\$24.72
2020	\$888.31	34.1	\$26.05
2021	\$925.41	34.3	\$26.98

TECHNICAL NOTES

- Household Survey:** Nationally, there is a monthly Current Population Survey of about 60,000 households conducted by the Census Bureau for the Bureau of Labor Statistics (BLS) to determine employment status of the civilian population. This information, along with other inputs, are used by DEW to operate the Local Area Unemployment Statistics program, which estimates the number of individuals employed and those not employed, but actively seeking employment for statewide and a variety of substate geographies.
- Employer Survey:** BLS conducts a monthly Current Employment Statistics survey of about 44,000 employers which yields national estimates of nonagricultural wage and salary employment, hours, and earnings by industry. These data are processed by DEW to generate comparable data for the state and its metropolitan statistical areas.
- Seasonally Adjusted:** Seasonal adjustment removes the effects of events that follow a regular pattern each year (i.e. tourist-related hiring and school closings in the summer). These adjustments make it easier to observe the cyclical and other nonseasonal movements in data over time.
- Not Seasonally Adjusted:** Effects of regular or seasonal patterns have not been removed from these data.

CURRENT EMPLOYMENT STATISTICS (CES)	LOCAL AREA UNEMPLOYMENT STATISTICS (LAUS)
Data is published by Industry	Data is published by County
Counts Jobs	Counts People
Utilizes an Establishment Survey	The Current Population Survey (CPS), which is a Household Survey , is used to calculate LAUS
Reference week is the Pay Period that includes the 12 th of the month	Reference week is the Calendar Week that includes the 12 th of the month
A job held by a person on unpaid leave during the reference week is not counted since they are not receiving pay	A person on unpaid leave is counted as employed because they will return to their job
Does not count self-employed workers	Does count self-employed workers
Does not include agricultural workers	Includes both agricultural and non-agricultural workers
Does not count unpaid family workers	Counts unpaid family workers if they worked at least 15 unpaid hours for a family business or family farm during the reference week
Workers on strike during the entire reference period are not counted	Workers on strike during the reference week are counted as employed in LAUS



Find more information at
scworkforceinfo.com



Do you need some help finding the data you need? Have a great idea for a research project you'd like to discuss with someone? We love to collaborate!

DATA TRENDS is prepared by the LMI Division of the S.C. Department of Employment and Workforce with funding provided by the US Department of Labor. Featured data is prepared in conjunction with the Bureau of Labor Statistics and current month estimates are always preliminary, with all previous data subject to revision.

*Interested in staying up to date with Trends as it's released?
 Subscribe by clicking here!*



**Labor Market
 Information**

SC Department of Employment and Workforce
 Labor Market Information Division
 Columbia, South Carolina 29202

dew.sc.gov
 scworkforceinfo.com