

South Carolina Data Trends: November 2025

The South Carolina Department of Employment and Workforce, through its Labor Market Information (LMI) Division, summarizes the latest workforce data trends as of November 2025, providing key insights into employment and wages for the state and each of its metro areas. For questions or additional information, please contact the LMI Division at lmicustomerservice@dew.sc.gov.

Table 1. Labor Market Snapshot

Metric	November 2025	MoM Δ (#)	YoY Δ (#)
Unemployment	120,696	+6,767	+7,742
Employment	2,481,123	+12,201	+43,940
Labor Force	2,601,819	+18,968	+51,682

Source: Bureau of Labor Statistics, Local Area Unemployment Statistics. Note: Current month's estimates are preliminary. All data are subject to revision. Estimates are seasonally adjusted. MoM = Month-over-Month. YoY = Year-over-Year. Δ (#) = Absolute Change.

Note: Data for October 2025 are unavailable due to the federal government shutdown during that period. Therefore, month-over-month comparisons in this table reflect changes between September and November.

Table 2. Nonagricultural Employment by Industry, Seasonally Adjusted

Industry	November 2025	MoM Δ (#)	MoM Δ (%)	YoY Δ (#)	YoY Δ (%)
Total Nonfarm	2,424,800	+1,200	+0.0	+48,400	+2.0
Construction	121,500	-300	-0.2	+700	+0.6
Manufacturing	260,500	-500	-0.2	-2,500	-1.0
Trade, Transportation, and Utilities	455,900	+500	+0.1	+8,800	+2.0
Information	30,900	0	0.0	+2,200	+7.7
Financial Activities	126,900	-600	-0.5	+2,900	+2.3
Professional and Business Services	325,400	+2,000	+0.6	+8,300	+2.6
Private Education and Health Services	316,600	+900	+0.3	+9,000	+2.9
Leisure and Hospitality	298,300	0	0.0	+15,500	+5.5
Other Services	93,800	0	0.0	+2,000	+2.2
Government	390,500	-700	-0.2	+1,500	+0.4

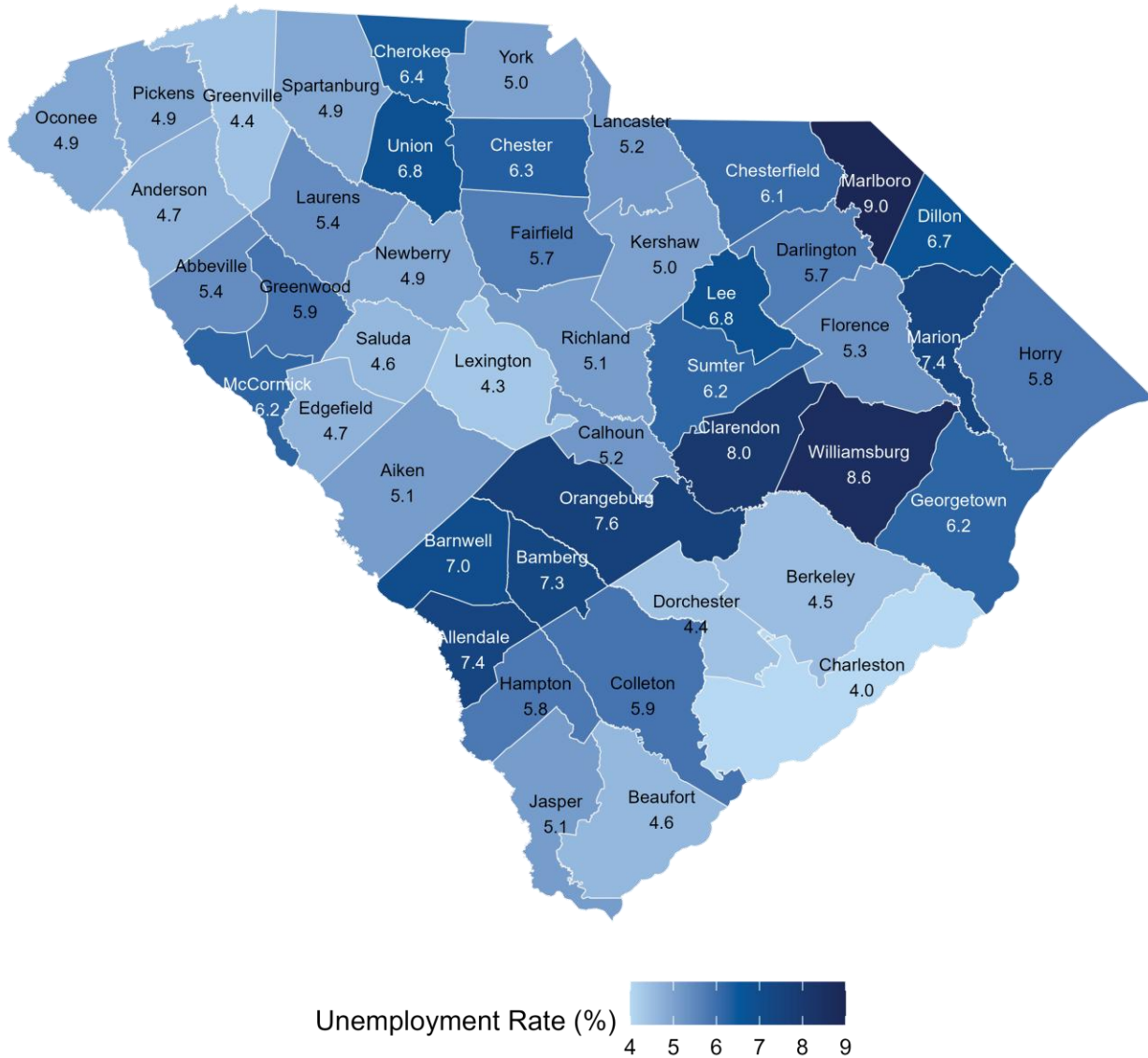
Source: Bureau of Labor Statistics, Current Employment Statistics. Note: Current month's estimates are preliminary. All data are subject to revision. MoM = Month-over-Month. YoY = Year-over-Year. Δ (#) = Absolute Change. Δ (%) = Percent Change.

Table 3. Nonagricultural Employment by Metropolitan Statistical Area, Seasonally Adjusted

Area	November 2025	MoM Δ (#)	MoM Δ (%)	YoY Δ (#)	YoY Δ (%)
Statewide	2,424,800	+1,200	+0.0	+48,400	+2.0
Charleston/North Charleston	435,900	0	0.0	+7,800	+1.8
Columbia	440,400	+100	+0.0	+5,600	+1.3
Florence	99,400	-200	-0.2	+2,600	+2.7
Greenville/Anderson/Mauldin	479,800	+800	+0.2	+5,000	+1.1
Hilton Head Island-Bluffton-Beaufort	91,600	-100	-0.1	+1,900	+2.1
Myrtle Beach	161,700	-700	-0.4	+6,400	+4.1
Spartanburg	182,800	+500	+0.3	+3,700	+2.1
Sumter	39,100	0	0.0	+1,100	+2.9

Source: Bureau of Labor Statistics, Current Employment Statistics. Note: Current month's estimates are preliminary. All data are subject to revision. MoM = Month-over-Month. YoY = Year-over-Year. Δ (#) = Absolute Change. Δ (%) = Percent Change.

Figure 1. Unemployment Rate by County, Not Seasonally Adjusted



Source: Bureau of Labor Statistics, Local Area Unemployment Statistics.

Table 4. Unemployment Estimates by County, Not Seasonally Adjusted

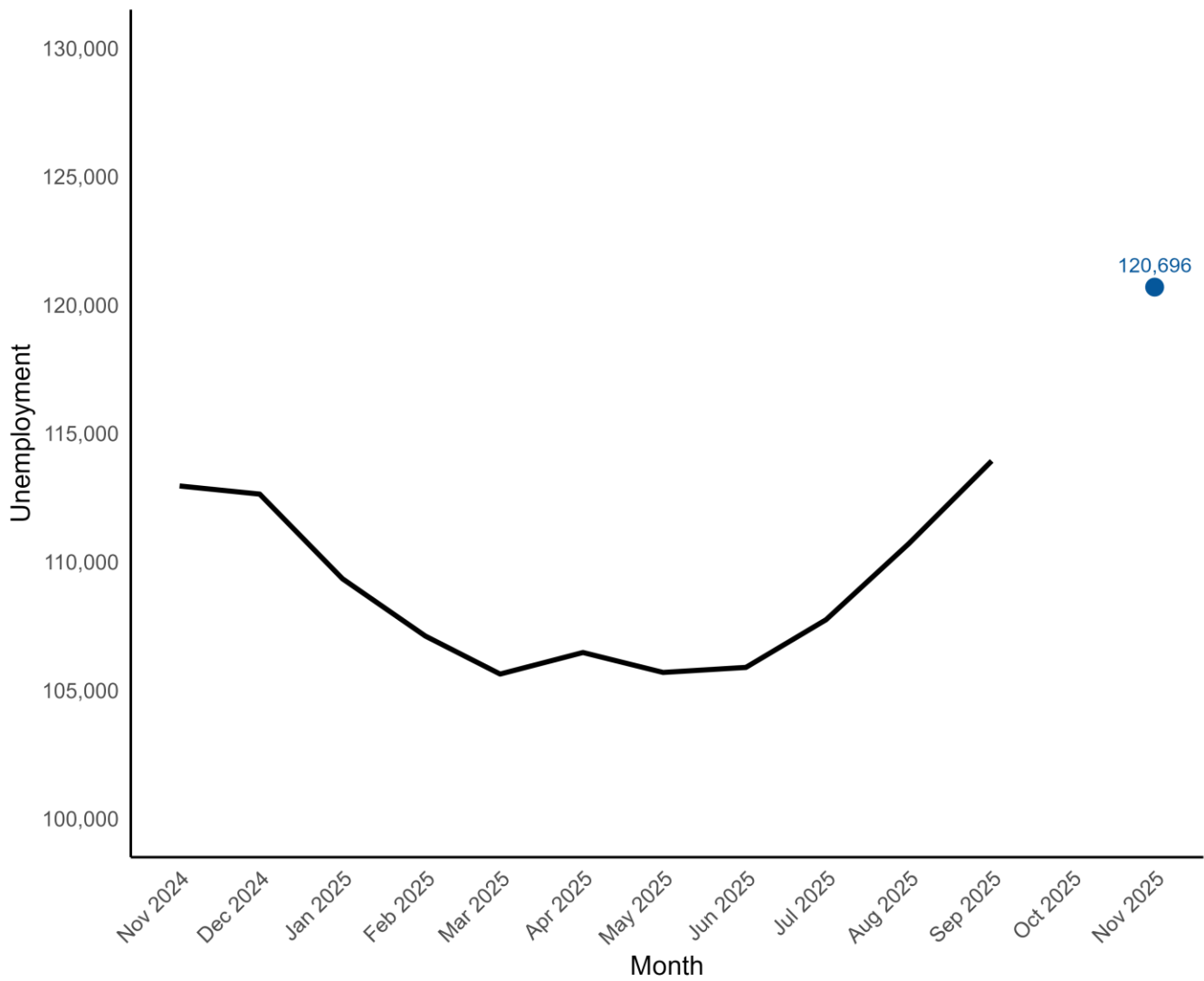
County	Labor Force	Employment	Unemp. Level	Unemp. Rate
Abbeville	10,478	9,908	570	5.4
Aiken	77,941	73,937	4,004	5.1
Allendale	2,620	2,426	194	7.4
Anderson	103,346	98,519	4,827	4.7
Bamberg	5,464	5,067	397	7.3
Barnwell	7,771	7,228	543	7.0
Beaufort	87,344	83,290	4,054	4.6
Berkeley	133,035	127,104	5,931	4.5
Calhoun	6,744	6,393	351	5.2
Charleston	240,736	231,022	9,714	4.0
Cherokee	23,606	22,090	1,516	6.4
Chester	14,919	13,984	935	6.3
Chesterfield	18,235	17,124	1,111	6.1
Clarendon	11,026	10,139	887	8.0
Colleton	15,526	14,605	921	5.9
Darlington	29,467	27,778	1,689	5.7
Dillon	12,022	11,214	808	6.7
Dorchester	89,271	85,361	3,910	4.4
Edgefield	11,752	11,205	547	4.7
Fairfield	10,210	9,625	585	5.7
Florence	66,890	63,341	3,549	5.3
Georgetown	27,771	26,051	1,720	6.2
Greenville	294,862	281,808	13,054	4.4
Greenwood	29,807	28,055	1,752	5.9
Hampton	7,878	7,425	453	5.8
Horry	177,981	167,651	10,330	5.8
Jasper	14,509	13,774	735	5.1

Table 4. Unemployment Estimates by County, Not Seasonally Adjusted

County	Labor Force	Employment	Unemp. Level	Unemp. Rate
Kershaw	33,311	31,632	1,679	5.0
Lancaster	51,958	49,254	2,704	5.2
Laurens	32,132	30,399	1,733	5.4
Lee	6,063	5,650	413	6.8
Lexington	160,918	153,929	6,989	4.3
McCormick	3,446	3,233	213	6.2
Marion	12,071	11,180	891	7.4
Marlboro	8,339	7,592	747	9.0
Newberry	18,834	17,915	919	4.9
Oconee	37,211	35,380	1,831	4.9
Orangeburg	34,992	32,347	2,645	7.6
Pickens	67,170	63,899	3,271	4.9
Richland	216,234	205,222	11,012	5.1
Saluda	8,891	8,480	411	4.6
Spartanburg	174,339	165,717	8,622	4.9
Sumter	43,440	40,732	2,708	6.2
Union	11,379	10,600	779	6.8
Williamsburg	11,249	10,282	967	8.6
York	161,816	153,731	8,085	5.0

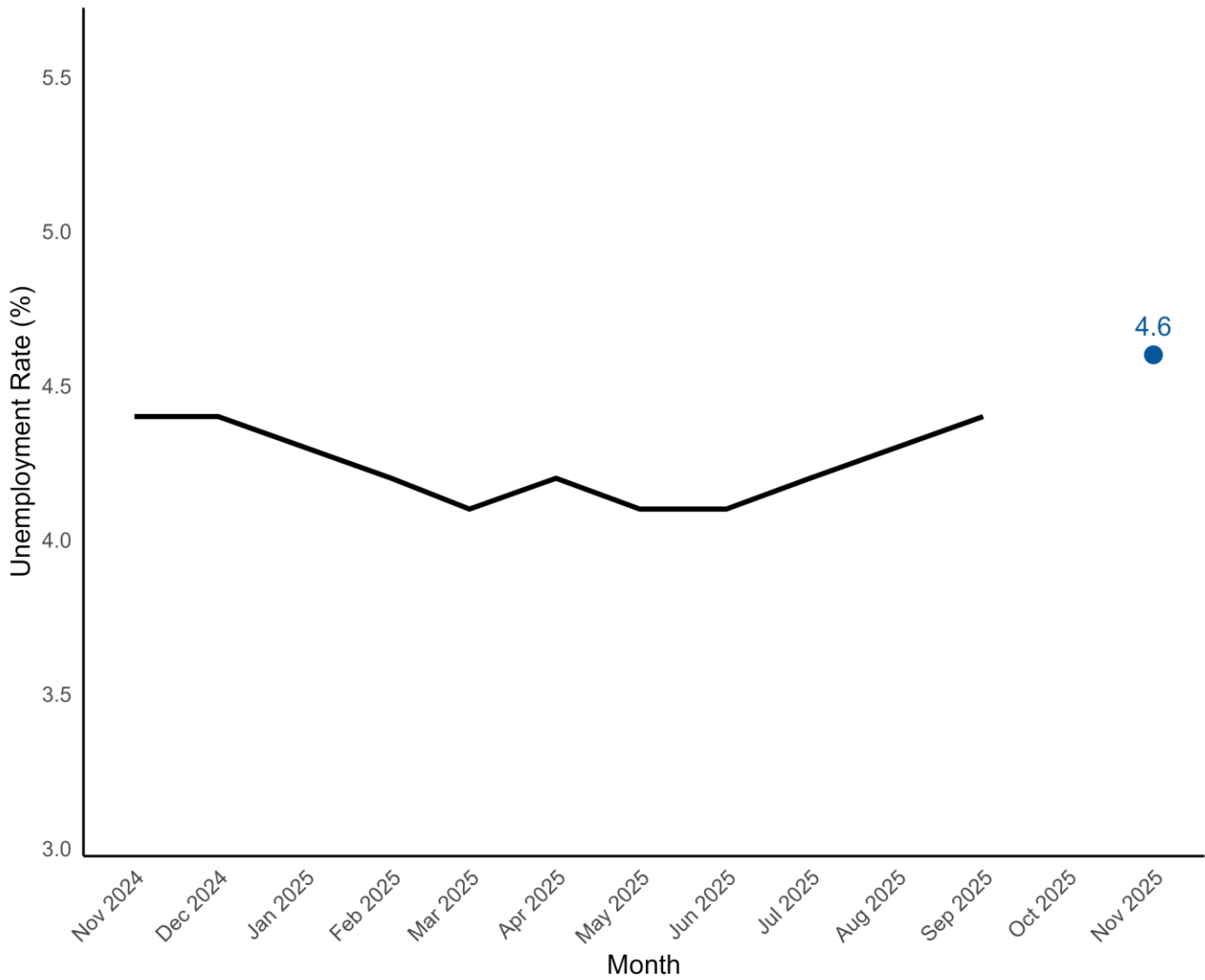
Source: Bureau of Labor Statistics, Local Area Unemployment Statistics. Note: Current month's estimates are preliminary. All data are subject to revision. Unemp = Unemployment.

Figure 2. Monthly Unemployment, Past 12 Months, Seasonally Adjusted



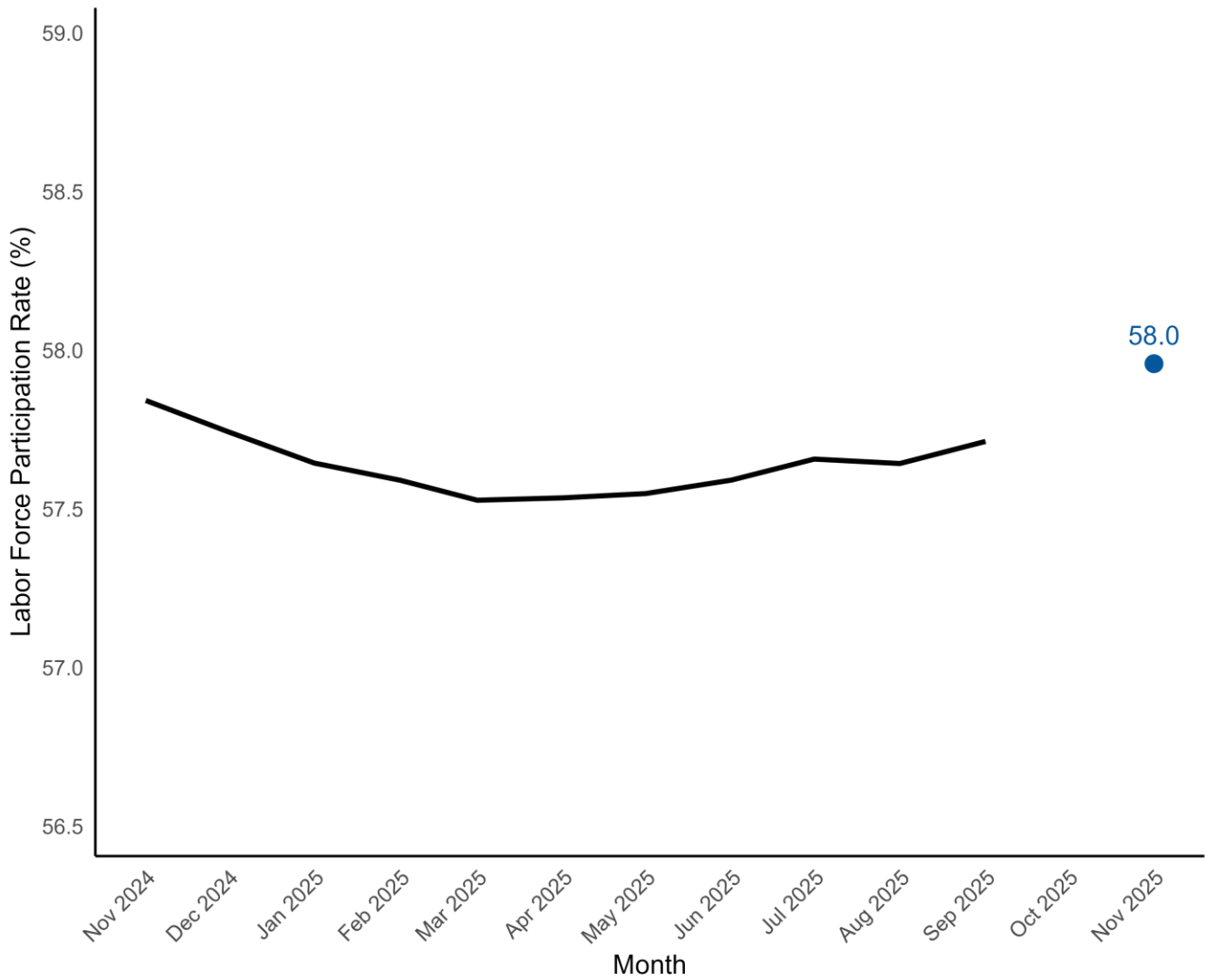
Source: Bureau of Labor Statistics, Local Area Unemployment Statistics.
Data for October 2025 are unavailable due to the federal government shutdown during that period.

Figure 3. Monthly Unemployment Rate, Past 12 months, Seasonally Adjusted



Source: Bureau of Labor Statistics, Local Area Unemployment Statistics.
Data for October 2025 are unavailable due to the federal government shutdown during that period.

Figure 4. Labor Force Participation, Past 12 Months, Seasonally Adjusted



Source: Bureau of Labor Statistics, Local Area Unemployment Statistics.
Data for October 2025 are unavailable due to the federal government shutdown during that period.

Table 5. NonFarm Payroll by Economic Sector, Seasonally Adjusted

Sector	November 2025	MoM Δ (#)	MoM Δ (%)	YoY Δ (#)	YoY Δ (%)
Total Nonfarm	2,424,800	+1,200	+0.0	+48,400	+2.0
Total Private	2,034,300	+1,900	+0.1	+46,900	+2.4
Goods Producing	386,500	-900	-0.2	-1,800	-0.5
Service-Providing	2,038,300	+2,100	+0.1	+50,200	+2.5
Private Service Providing	1,647,800	+2,800	+0.2	+48,700	+3.0
Mining and Logging	4,500	-100	-2.2	0	0.0
Mining, Logging, and Construction	126,000	-400	-0.3	+700	+0.6
Construction	121,500	-300	-0.2	+700	+0.6
Manufacturing	260,500	-500	-0.2	-2,500	-1.0
Durable Goods	158,500	-400	-0.3	-3,200	-2.0
Non-Durable Goods	102,000	-100	-0.1	+700	+0.7
Trade, Transportation, and Utilities	455,900	+500	+0.1	+8,800	+2.0
Wholesale Trade	86,000	+100	+0.1	+1,900	+2.3
Retail Trade	273,700	+900	+0.3	+5,600	+2.1
Transportation, Warehousing, and Utilities	96,200	-500	-0.5	+1,300	+1.4
Information	30,900	0	0.0	+2,200	+7.7
Financial Activities	126,900	-600	-0.5	+2,900	+2.3
Finance and Insurance	90,300	0	0.0	+2,500	+2.8
Real Estate and Rental and Leasing	36,600	-600	-1.6	+400	+1.1
Professional and Business Services	325,400	+2,000	+0.6	+8,300	+2.6
Professional, Scientific, and Technical	144,400	+1,500	+1.0	+7,600	+5.6
Management of Companies and Enterprises	25,900	+200	+0.8	+1,200	+4.9
Administrative and Support and Waste Management and Remediation Services	155,100	+300	+0.2	-500	-0.3
Private Education and Health Services	316,600	+900	+0.3	+9,000	+2.9
Private Educational Services	54,900	+300	+0.5	+1,700	+3.2
Health Care and Social Assistance	261,700	+600	+0.2	+7,300	+2.9

Table 5. NonFarm Payroll by Economic Sector, Seasonally Adjusted

Sector	November 2025	MoM Δ (#)	MoM Δ (%)	YoY Δ (#)	YoY Δ (%)
Leisure and Hospitality	298,300	0	0.0	+15,500	+5.5
Arts, Entertainment, and Recreation	40,500	-1,200	-2.9	+2,100	+5.5
Accommodation and Food Services	257,800	+1,200	+0.5	+13,400	+5.5
Other Services	93,800	0	0.0	+2,000	+2.2
Government	390,500	-700	-0.2	+1,500	+0.4
Federal Government	36,000	-300	-0.8	-2,600	-6.7
State Government	116,200	-200	-0.2	+1,700	+1.5
Local Government	238,300	-200	-0.1	+2,400	+1.0

Source: Bureau of Labor Statistics, Current Employment Statistics. Note: Current month's estimates are preliminary. All data are subject to revision. MoM = Month-over-Month. YoY = Year-over-Year. Δ (#) = Absolute Change. Δ (%) = Percent Change.

Table 6. Average Weekly Earnings by Metropolitan Statistical Area, Total Private, Not Seasonally Adjusted

Area	November 2025	MoM Δ (#)	MoM Δ (%)	YoY Δ (#)	YoY Δ (%)
Charleston-North Charleston	\$1,262.80	+\$74.84	+6.3	+\$105.04	+9.1
Columbia	\$1,046.49	+\$39.50	+3.9	+\$17.01	+1.7
Florence	\$800.32	+\$16.90	+2.2	+\$67.64	+9.2
Greenville-Anderson-Mauldin	\$1,225.27	+\$23.44	+2.0	+\$120.95	+11.0
Hilton Head Island-Bluffton-Beaufort	\$906.30	-\$26.06	-2.8	+\$80.34	+9.7
Myrtle Beach-Conway-North Myrtle Beach	\$820.91	+\$12.83	+1.6	-\$45.49	-5.3
Spartanburg	\$1,134.38	+\$37.30	+3.4	+\$73.66	+6.9
Sumter	\$1,001.00	+\$37.48	+3.9	+\$42.17	+4.4

Source: Bureau of Labor Statistics, Current Employment Statistics. Note: Current month's estimates are preliminary. All data are subject to revision. MoM = Month-over-Month. YoY = Year-over-Year. Δ (#) = Absolute Change. Δ (%) = Percent Change.

Table 7. Average Weekly Hours by Metropolitan Statistical Area, Total Private, Not Seasonally Adjusted

Area	November 2025	MoM Δ (#)	MoM Δ (%)	YoY Δ (#)	YoY Δ (%)
Charleston-North Charleston	35.0	1.0	+2.9	1.5	+4.5
Columbia	34.3	0.7	+2.1	-0.2	-0.6
Florence	32.8	-0.2	-0.6	-0.1	-0.3
Greenville-Anderson-Mauldin	35.9	0.5	+1.4	1.7	+5.0
Hilton Head Island-Bluffton-Beaufort	30.9	0.2	+0.7	0.0	0.0
Myrtle Beach-Conway-North Myrtle Beach	29.7	0.1	+0.3	-1.1	-3.6
Spartanburg	36.3	0.2	+0.6	1.2	+3.4
Sumter	33.3	1.3	+4.1	1.2	+3.7

Source: Bureau of Labor Statistics, Current Employment Statistics. Note: Current month's estimates are preliminary. All data are subject to revision. MoM = Month-over-Month. YoY = Year-over-Year. Δ (#) = Absolute Change. Δ (%) = Percent Change.

Table 8. Average Hourly Earnings by Metropolitan Statistical Area, Total Private, Not Seasonally Adjusted

Area	November 2025	MoM Δ (#)	MoM Δ (%)	YoY Δ (#)	YoY Δ (%)
Charleston-North Charleston	\$36.08	+\$1.14	+3.3	+\$1.52	+4.4
Columbia	\$30.51	+\$0.54	+1.8	+\$0.67	+2.2
Florence	\$24.40	+\$0.66	+2.8	+\$2.13	+9.6
Greenville-Anderson-Mauldin	\$34.13	+\$0.18	+0.5	+\$1.84	+5.7
Hilton Head Island-Bluffton-Beaufort	\$29.33	-\$1.04	-3.4	+\$2.60	+9.7
Myrtle Beach-Conway-North Myrtle Beach	\$27.64	+\$0.34	+1.2	-\$0.49	-1.7
Spartanburg	\$31.25	+\$0.86	+2.8	+\$1.03	+3.4
Sumter	\$30.06	-\$0.05	-0.2	+\$0.19	+0.6

Source: Bureau of Labor Statistics, Current Employment Statistics. Note: Current month's estimates are preliminary. All data are subject to revision. MoM = Month-over-Month. YoY = Year-over-Year. Δ (#) = Absolute Change. Δ (%) = Percent Change.

Table 9. Average Weekly Earnings by Industry, Statewide, Not Seasonally Adjusted

Industry	November 2025	MoM Δ (#)	MoM Δ (%)	YoY Δ (#)	YoY Δ (%)
Total Private	\$1,155.41	+\$41.23	+3.7	+\$90.63	+8.5
Goods Producing	\$1,474.00	+\$37.87	+2.6	+\$119.61	+8.8
Construction	\$1,416.40	+\$28.12	+2.0	+\$47.41	+3.5
Manufacturing	\$1,474.55	+\$39.47	+2.8	+\$90.26	+6.5
Private Service Providing	\$1,080.77	+\$41.42	+4.0	+\$85.99	+8.6
Trade, Transportation, and Utilities	\$990.11	+\$14.16	+1.5	+\$101.39	+11.4
Financial Activities	\$1,388.70	+\$67.64	+5.1	+\$66.40	+5.0
Professional and Business Services	\$1,552.78	+\$78.09	+5.3	+\$159.39	+11.4
Private Education and Health Services	\$1,012.51	+\$31.62	+3.2	-\$20.73	-2.0
Leisure and Hospitality	\$485.17	-\$10.47	-2.1	+\$19.34	+4.2
Other Services	\$951.59	+\$14.24	+1.5	-\$20.68	-2.1

Source: Bureau of Labor Statistics, Current Employment Statistics. Note: Current month's estimates are preliminary. All data are subject to revision. MoM = Month-over-Month. YoY = Year-over-Year. Δ (#) = Absolute Change. Δ (%) = Percent Change.

Table 10. Average Weekly Hours by Industry, Statewide, Not Seasonally Adjusted

Industry	November 2025	MoM Δ (#)	MoM Δ (%)	YoY Δ (#)	YoY Δ (%)
Total Private	34.5	0.5	+1.5	0.9	+2.7
Goods Producing	41.3	0.8	+2.0	1.5	+3.8
Construction	41.5	0.8	+2.0	0.5	+1.2
Manufacturing	41.2	0.5	+1.2	0.7	+1.7
Private Service Providing	32.9	0.4	+1.2	0.8	+2.5
Trade, Transportation, and Utilities	33.7	0.0	0.0	1.5	+4.7
Financial Activities	35.3	0.1	+0.3	-1.4	-3.8
Professional and Business Services	38.8	0.9	+2.4	1.1	+2.9
Private Education and Health Services	31.8	0.7	+2.3	-0.1	-0.3
Leisure and Hospitality	23.9	-0.6	-2.4	-0.4	-1.6
Other Services	32.4	1.3	+4.2	-1.0	-3.0

Source: Bureau of Labor Statistics, Current Employment Statistics. Note: Current month's estimates are preliminary. All data are subject to revision. MoM = Month-over-Month. YoY = Year-over-Year. Δ (#) = Absolute Change. Δ (%) = Percent Change.

Table 11. Average Hourly Earnings by Industry, Statewide, Not Seasonally Adjusted

Industry	November 2025	MoM Δ (#)	MoM Δ (%)	YoY Δ (#)	YoY Δ (%)
Total Private	\$33.49	+\$0.72	+2.2	+\$1.80	+5.7
Goods Producing	\$35.69	+\$0.23	+0.6	+\$1.66	+4.9
Construction	\$34.13	+\$0.02	+0.1	+\$0.74	+2.2
Manufacturing	\$35.79	+\$0.53	+1.5	+\$1.61	+4.7
Private Service Providing	\$32.85	+\$0.87	+2.7	+\$1.86	+6.0
Trade, Transportation, and Utilities	\$29.38	+\$0.42	+1.5	+\$1.78	+6.4
Financial Activities	\$39.34	+\$1.81	+4.8	+\$3.31	+9.2
Professional and Business Services	\$40.02	+\$1.11	+2.9	+\$3.06	+8.3
Private Education and Health Services	\$31.84	+\$0.30	+1.0	-\$0.55	-1.7
Leisure and Hospitality	\$20.30	+\$0.07	+0.3	+\$1.13	+5.9
Other Services	\$29.37	-\$0.77	-2.6	+\$0.26	+0.9

Source: Bureau of Labor Statistics, Current Employment Statistics. Note: Current month's estimates are preliminary. All data are subject to revision. YoY = Year-over-Year. Δ (#) = Absolute Change. Δ (%) = Percent Change.

Table 12. Charleston-North Charleston MSA: Nonfarm Payroll by Economic Sector, NSA

Sector	November 2025	MoM Δ (#)	MoM Δ (%)	YoY Δ (#)	YoY Δ (%)
Total Nonfarm	438,100	+1,100	+0.3	+7,300	+1.7
Total Private	365,400	+600	+0.2	+6,700	+1.9
Goods Producing	59,600	0	0.0	+100	+0.2
Service-Providing	378,500	+1,100	+0.3	+7,200	+1.9
Private Service Providing	305,800	+600	+0.2	+6,600	+2.2
Mining, Logging, and Construction	25,400	+100	+0.4	+800	+3.3
Manufacturing	34,200	-100	-0.3	-700	-2.0
Trade, Transportation, and Utilities	78,900	+700	+0.9	+900	+1.2
Wholesale Trade	13,200	0	0.0	+300	+2.3
Retail Trade	46,200	+500	+1.1	+600	+1.3
General Merchandise Stores	8,700	+100	+1.2	0	0.0
Transportation, Warehousing, and Utilities	19,500	+200	+1.0	0	0.0
Information	8,400	0	0.0	+600	+7.7
Financial Activities	23,200	+300	+1.3	+1,500	+6.9
Professional and Business Services	69,900	-100	-0.1	+700	+1.0
Administrative and Support and Waste Management	29,100	-200	-0.7	+100	+0.3
Private Education and Health Services	52,000	+500	+1.0	+200	+0.4
Leisure and Hospitality	56,400	-900	-1.6	+2,300	+4.3
Accommodation and Food Services	49,100	-500	-1.0	+2,100	+4.5
Food Services and Drinking Places	41,100	-200	-0.5	+2,300	+5.9
Other Services	17,000	+100	+0.6	+400	+2.4
Government	72,700	+500	+0.7	+600	+0.8
Federal Government	11,500	0	0.0	-1,000	-8.0
State Government	30,500	+200	+0.7	+2,200	+7.8
Local Government	30,700	+300	+1.0	-600	-1.9

Source: Bureau of Labor Statistics, Current Employment Statistics. Note: Current month's estimates are preliminary. All data are subject to revision. MSA = Metropolitan Statistical Area. NSA = Not Seasonally Adjusted. YoY = Year-over-Year. Δ (#) = Absolute Change. Δ (%) = Percent Change.

Table 13. Columbia MSA: Nonfarm Payroll by Economic Sector, NSA

Sector	November 2025	MoM Δ (#)	MoM Δ (%)	YoY Δ (#)	YoY Δ (%)
Total Nonfarm	443,500	+1,700	+0.4	+5,900	+1.3
Total Private	358,700	+1,500	+0.4	+6,300	+1.8
Goods Producing	51,000	0	0.0	-100	-0.2
Service-Providing	392,500	+1,700	+0.4	+6,000	+1.6
Private Service Providing	307,700	+1,500	+0.5	+6,400	+2.1
Mining, Logging, and Construction	19,500	+200	+1.0	+700	+3.7
Manufacturing	31,500	-200	-0.6	-800	-2.5
Trade, Transportation, and Utilities	79,900	+1,100	+1.4	+400	+0.5
Wholesale Trade	16,400	0	0.0	+200	+1.2
Retail Trade	45,600	+700	+1.6	+400	+0.9
Transportation, Warehousing, and Utilities	17,900	+400	+2.3	-200	-1.1
Information	5,300	0	0.0	+500	+10.4
Financial Activities	36,700	+100	+0.3	+800	+2.2
Credit Intermediation and Related Activities including Monetary Authorities - Central Bank	6,500	0	0.0	-100	-1.5
Professional and Business Services	61,000	+1,500	+2.5	+700	+1.2
Administrative and Support and Waste Management	31,500	+500	+1.6	+500	+1.6
Private Education and Health Services	62,100	-400	-0.6	+1,000	+1.6
Leisure and Hospitality	43,800	-800	-1.8	+2,500	+6.1
Food Services and Drinking Places	36,300	-100	-0.3	+1,900	+5.5
Other Services	18,900	0	0.0	+500	+2.7
Government	84,800	+200	+0.2	-400	-0.5
Federal Government	11,600	+100	+0.9	-800	-6.5
State Government	36,300	0	0.0	0	0.0
Local Government	36,900	+100	+0.3	+400	+1.1

Source: Bureau of Labor Statistics, Current Employment Statistics. Note: Current month's estimates are preliminary. All data are subject to revision. MSA = Metropolitan Statistical Area. NSA = Not Seasonally Adjusted. YoY = Year-over-Year. Δ (#) = Absolute Change. Δ (%) = Percent Change.

Table 14. Greenville-Anderson-Mauldin MSA: Nonfarm Payroll by Economic Sector, NSA

Sector	November 2025	MoM Δ (#)	MoM Δ (%)	YoY Δ (#)	YoY Δ (%)
Total Nonfarm	484,200	+3,300	+0.7	+5,600	+1.2
Total Private	423,200	+3,000	+0.7	+7,200	+1.7
Goods Producing	85,600	-100	-0.1	+1,200	+1.4
Service-Providing	398,600	+3,400	+0.9	+4,400	+1.1
Private Service Providing	337,600	+3,100	+0.9	+6,000	+1.8
Mining, Logging, and Construction	25,500	+100	+0.4	+1,100	+4.5
Manufacturing	60,100	-200	-0.3	+100	+0.2
Trade, Transportation, and Utilities	89,100	+1,400	+1.6	+1,500	+1.7
Wholesale Trade	22,300	+100	+0.5	+400	+1.8
Retail Trade	51,100	+1,100	+2.2	+1,100	+2.2
Transportation, Warehousing, and Utilities	15,700	+200	+1.3	0	0.0
Information	6,500	0	0.0	+500	+8.3
Financial Activities	24,300	+100	+0.4	+500	+2.1
Professional and Business Services	78,400	+600	+0.8	+300	+0.4
Professional, Scientific, and Technical Services	32,800	+200	+0.6	+500	+1.5
Management of Companies and Enterprises	7,400	+100	+1.4	+500	+7.2
Administrative and Support and Waste Management	38,200	+300	+0.8	-700	-1.8
Private Education and Health Services	70,000	+600	+0.9	+2,400	+3.6
Educational Services	17,200	+300	+1.8	+900	+5.5
Health Care and Social Assistance	52,800	+300	+0.6	+1,500	+2.9
Leisure and Hospitality	51,700	+500	+1.0	+500	+1.0
Other Services	17,600	-100	-0.6	+300	+1.7
Government	61,000	+300	+0.5	-1,600	-2.6
Federal Government	3,000	0	0.0	-100	-3.2
State Government	11,700	+100	+0.9	-2,200	-15.8
Local Government	46,300	+200	+0.4	+700	+1.5

Source: Bureau of Labor Statistics, Current Employment Statistics. Note: Current month's estimates are preliminary. All data are subject to revision. MSA = Metropolitan Statistical Area. NSA = Not Seasonally Adjusted. YoY = Year-over-Year. Δ (#) = Absolute Change. Δ (%) = Percent Change.

Table 15. Myrtle Beach-Conway-North Myrtle Beach MSA: Nonfarm Payroll by Economic Sector, NSA

Sector	November 2025	MoM Δ (#)	MoM Δ (%)	YoY Δ (#)	YoY Δ (%)
Total Nonfarm	158,800	-2,100	-1.3	+5,600	+3.7
Total Private	137,000	-2,200	-1.6	+5,300	+4.0
Goods Producing	13,300	+200	+1.5	+200	+1.5
Service-Providing	145,500	-2,300	-1.6	+5,400	+3.9
Private Service Providing	123,700	-2,400	-1.9	+5,100	+4.3
Mining, Logging, and Construction	9,800	+200	+2.1	+200	+2.1
Manufacturing	3,500	0	0.0	0	0.0
Trade, Transportation, and Utilities	34,100	+300	+0.9	+600	+1.8
Wholesale Trade	3,300	0	0.0	+100	+3.1
Retail Trade	27,400	+200	+0.7	+500	+1.9
Transportation, Warehousing, and Utilities	3,400	+100	+3.0	0	0.0
Information	2,000	0	0.0	0	0.0
Financial Activities	8,800	0	0.0	+200	+2.3
Professional and Business Services	16,800	-100	-0.6	0	0.0
Private Education and Health Services	18,600	0	0.0	+500	+2.8
Leisure and Hospitality	37,500	-2,600	-6.5	+3,700	+10.9
Accommodation and Food Services	31,100	-2,200	-6.6	+2,500	+8.7
Food Services and Drinking Places	25,800	-600	-2.3	+4,000	+18.3
Other Services	5,900	0	0.0	+100	+1.7
Government	21,800	+100	+0.5	+300	+1.4
Federal Government	1,100	0	0.0	0	0.0
State Government	4,600	0	0.0	+100	+2.2
Local Government	16,100	+100	+0.6	+200	+1.3

Source: Bureau of Labor Statistics, Current Employment Statistics. Note: Current month's estimates are preliminary. All data are subject to revision. MSA = Metropolitan Statistical Area. NSA = Not Seasonally Adjusted. YoY = Year-over-Year. Δ (#) = Absolute Change. Δ (%) = Percent Change.

Table 16. Spartanburg MSA: Nonfarm Payroll by Economic Sector, NSA

Sector	November 2025	MoM Δ (#)	MoM Δ (%)	YoY Δ (#)	YoY Δ (%)
Total Nonfarm	183,900	+700	+0.4	+3,700	+2.1
Total Private	151,500	+600	+0.4	+2,700	+1.8
Goods Producing	49,200	+100	+0.2	+700	+1.4
Service-Providing	134,700	+600	+0.4	+3,000	+2.3
Private Service Providing	102,300	+500	+0.5	+2,000	+2.0
Mining, Logging, and Construction	8,500	+100	+1.2	+300	+3.7
Manufacturing	40,700	0	0.0	+400	+1.0
Durable Goods	28,500	0	0.0	+300	+1.1
Non-Durable Goods	12,200	0	0.0	+100	+0.8
Trade, Transportation, and Utilities	37,800	+400	+1.1	+200	+0.5
Wholesale Trade	7,600	0	0.0	+200	+2.7
Retail Trade	19,400	+200	+1.0	+100	+0.5
Transportation, Warehousing, and Utilities	10,800	+200	+1.9	-100	-0.9
Information	900	0	0.0	0	0.0
Financial Activities	5,800	0	0.0	+100	+1.8
Professional and Business Services	17,300	0	0.0	+100	+0.6
Private Education and Health Services	18,200	+100	+0.6	+400	+2.2
Leisure and Hospitality	15,600	-100	-0.6	+800	+5.4
Other Services	6,700	+100	+1.5	+400	+6.3
Government	32,400	+100	+0.3	+1,000	+3.2
Federal Government	700	0	0.0	0	0.0
State Government	4,800	+100	+2.1	+100	+2.1
Local Government	26,900	0	0.0	+900	+3.5

Source: Bureau of Labor Statistics, Current Employment Statistics. Note: Current month's estimates are preliminary. All data are subject to revision. MSA = Metropolitan Statistical Area. NSA = Not Seasonally Adjusted. YoY = Year-over-Year. Δ (#) = Absolute Change. Δ (%) = Percent Change.

Table 17. Florence MSA: Nonfarm Payroll by Economic Sector, NSA

Sector	November 2025	MoM Δ (#)	MoM Δ (%)	YoY Δ (#)	YoY Δ (%)
Total Nonfarm	99,800	-100	-0.1	+2,200	+2.3
Total Private	80,500	-300	-0.4	+1,700	+2.2
Goods Producing	15,700	-300	-1.9	-200	-1.3
Service-Providing	84,100	+200	+0.2	+2,400	+2.9
Private Service Providing	64,800	0	0.0	+1,900	+3.0
Trade, Transportation, and Utilities	20,600	+200	+1.0	0	0.0
Government	19,300	+200	+1.0	+500	+2.7
Federal Government	800	+100	+14.3	0	0.0
State Government	5,500	0	0.0	+200	+3.8
Local Government	13,000	+100	+0.8	+300	+2.4

Source: Bureau of Labor Statistics, Current Employment Statistics. Note: Current month's estimates are preliminary. All data are subject to revision. MSA = Metropolitan Statistical Area. NSA = Not Seasonally Adjusted. YoY = Year-over-Year. Δ (#) = Absolute Change. Δ (%) = Percent Change.

Table 18. Hilton Head Island-Bluffton-Beaufort MSA: Nonfarm Payroll by Economic Sector, NSA

Sector	November 2025	MoM Δ (#)	MoM Δ (%)	YoY Δ (#)	YoY Δ (%)
Total Nonfarm	91,600	-200	-0.2	+2,000	+2.2
Total Private	78,800	-200	-0.3	+1,900	+2.5
Goods Producing	7,600	-100	-1.3	-200	-2.6
Service-Providing	84,000	-100	-0.1	+2,200	+2.7
Private Service Providing	71,200	-100	-0.1	+2,100	+3.0
Government	12,800	0	0.0	+100	+0.8

Source: Bureau of Labor Statistics, Current Employment Statistics. Note: Current month's estimates are preliminary. All data are subject to revision. MSA = Metropolitan Statistical Area. NSA = Not Seasonally Adjusted. YoY = Year-over-Year. Δ (#) = Absolute Change. Δ (%) = Percent Change.

Table 19. Sumter MSA: Nonfarm Payroll by Economic Sector, NSA

Sector	November 2025	MoM Δ (#)	MoM Δ (%)	YoY Δ (#)	YoY Δ (%)
Total Nonfarm	39,100	-100	-0.3	+1,000	+2.6
Total Private	33,100	-100	-0.3	+1,100	+3.4
Goods Producing	9,200	-100	-1.1	+200	+2.2
Service-Providing	29,900	0	0.0	+800	+2.7
Private Service Providing	23,900	0	0.0	+900	+3.9
Manufacturing	6,200	0	0.0	+100	+1.6
Government	6,000	0	0.0	-100	-1.6
Federal Government	1,200	0	0.0	-100	-7.7
State Government	1,400	0	0.0	0	0.0
Local Government	3,400	0	0.0	0	0.0

Source: Bureau of Labor Statistics, Current Employment Statistics. Note: Current month's estimates are preliminary. All data are subject to revision. MSA = Metropolitan Statistical Area. NSA = Not Seasonally Adjusted. YoY = Year-over-Year. Δ (#) = Absolute Change. Δ (%) = Percent Change.

For more information on South Carolina's LMI division and our funding sources, visit:

<https://lmi.sc.gov/About-Us/>.