

# South Carolina Data Trends: April 2026

The South Carolina Department of Employment and Workforce, through its Labor Market Information (LMI) Division, summarizes the latest workforce data trends as of April 2026, providing key insights into employment and wages for the state and each of its metro areas. For questions or additional information, please contact the LMI Division at [lmicustomerservice@dew.sc.gov](mailto:lmicustomerservice@dew.sc.gov).

**Table 1. Labor Market Snapshot**

Metric	April 2026	MoM $\Delta$ (#)	YoY $\Delta$ (#)
Unemployment	128,013	-3,296	+18,992
Employment	2,539,583	+7,449	+56,209
Labor Force	2,667,596	+4,153	+75,201

Source: Bureau of Labor Statistics, Local Area Unemployment Statistics. Note: Current month's estimates are preliminary. All data are subject to revision. Estimates are seasonally adjusted. MoM = Month-over-Month. YoY = Year-over-Year.  $\Delta$  (#) = Absolute Change.

**Table 2. Nonagricultural Employment by Industry, Seasonally Adjusted**

Industry	April 2026	MoM $\Delta$ (#)	MoM $\Delta$ (%)	YoY $\Delta$ (#)	YoY $\Delta$ (%)
Total Nonfarm	2,404,700	+5,000	+0.2	+21,200	+0.9
Construction	127,000	+900	+0.7	+4,000	+3.3
Manufacturing	263,700	+200	+0.1	+1,600	+0.6
Trade, Transportation, and Utilities	445,400	+700	+0.2	+600	+0.1
Information	26,000	-400	-1.5	-1,400	-5.1
Financial Activities	123,000	+300	+0.2	+400	+0.3
Professional and Business Services	314,200	+3,600	+1.2	-3,700	-1.2
Private Education and Health Services	323,400	+1,300	+0.4	+9,100	+2.9
Leisure and Hospitality	285,400	-400	-0.1	+2,700	+1.0
Other Services	93,700	-700	-0.7	+2,900	+3.2
Government	398,100	-500	-0.1	+4,900	+1.2

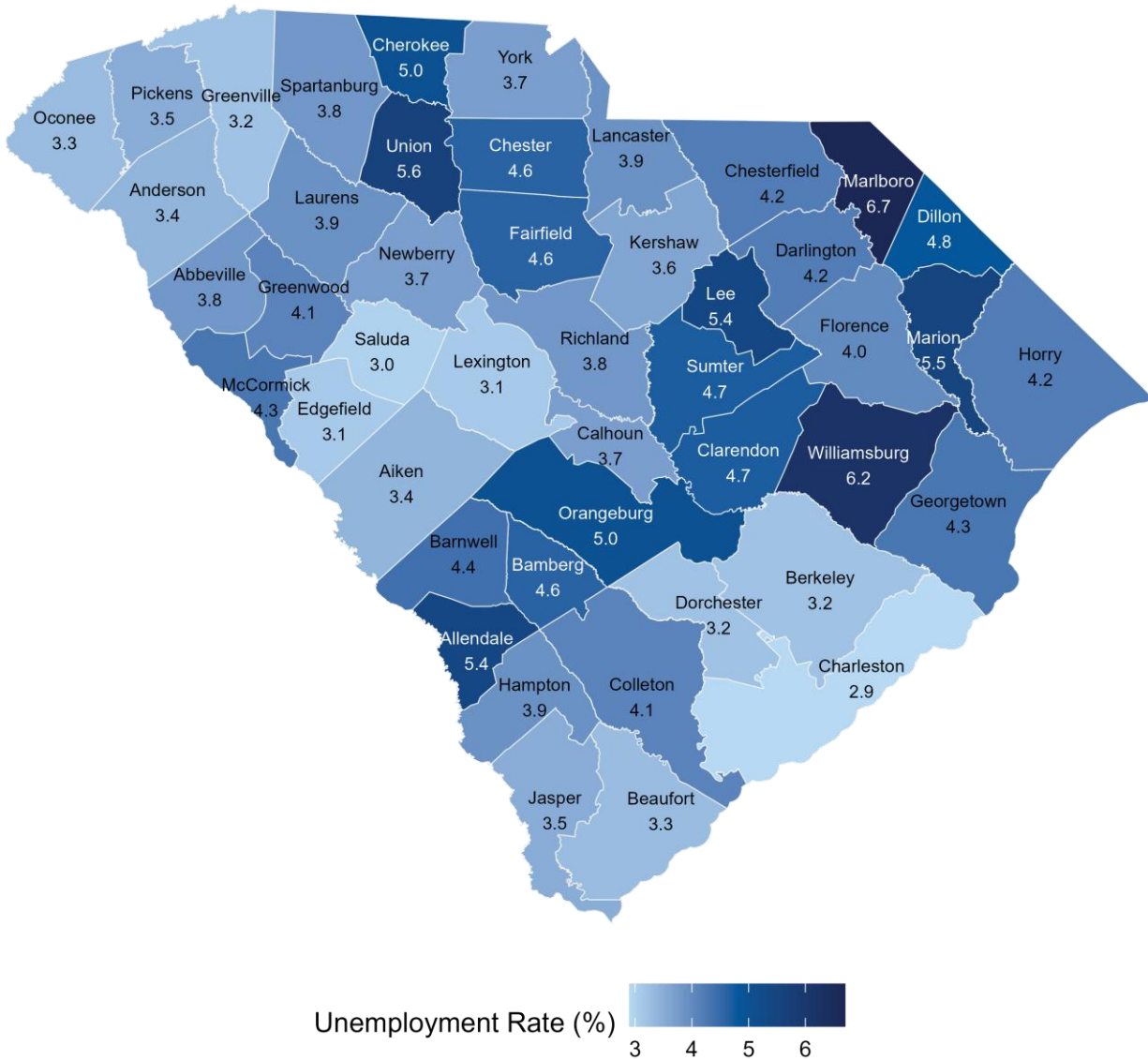
Source: Bureau of Labor Statistics, Current Employment Statistics. Note: Current month's estimates are preliminary. All data are subject to revision. MoM = Month-over-Month. YoY = Year-over-Year.  $\Delta$  (#) = Absolute Change.  $\Delta$  (%) = Percent Change.

**Table 3. Nonagricultural Employment by Metropolitan Statistical Area, Seasonally Adjusted**

Area	April 2026	MoM $\Delta$ (#)	MoM $\Delta$ (%)	YoY $\Delta$ (#)	YoY $\Delta$ (%)
Statewide	2,404,700	+5,000	+0.2	+21,200	+0.9
Charleston/North Charleston	434,000	+1,300	+0.3	+1,000	+0.2
Columbia	435,400	+400	+0.1	+600	+0.1
Florence	96,500	+100	+0.1	0	0.0
Greenville/Anderson/Mauldin	484,600	+1,900	+0.4	+6,900	+1.4
Hilton Head Island-Bluffton-Beaufort	89,600	0	0.0	+1,100	+1.2
Myrtle Beach	158,300	-100	-0.1	+2,500	+1.6
Spartanburg	178,900	+200	+0.1	+1,600	+0.9
Sumter	37,500	-100	-0.3	-500	-1.3

Source: Bureau of Labor Statistics, Current Employment Statistics. Note: Current month's estimates are preliminary. All data are subject to revision. MoM = Month-over-Month. YoY = Year-over-Year.  $\Delta$  (#) = Absolute Change.  $\Delta$  (%) = Percent Change.

Figure 1. Unemployment Rate by County, Not Seasonally Adjusted



Source: Bureau of Labor Statistics, Local Area Unemployment Statistics.

**Table 4. Unemployment Estimates by County, Not Seasonally Adjusted**

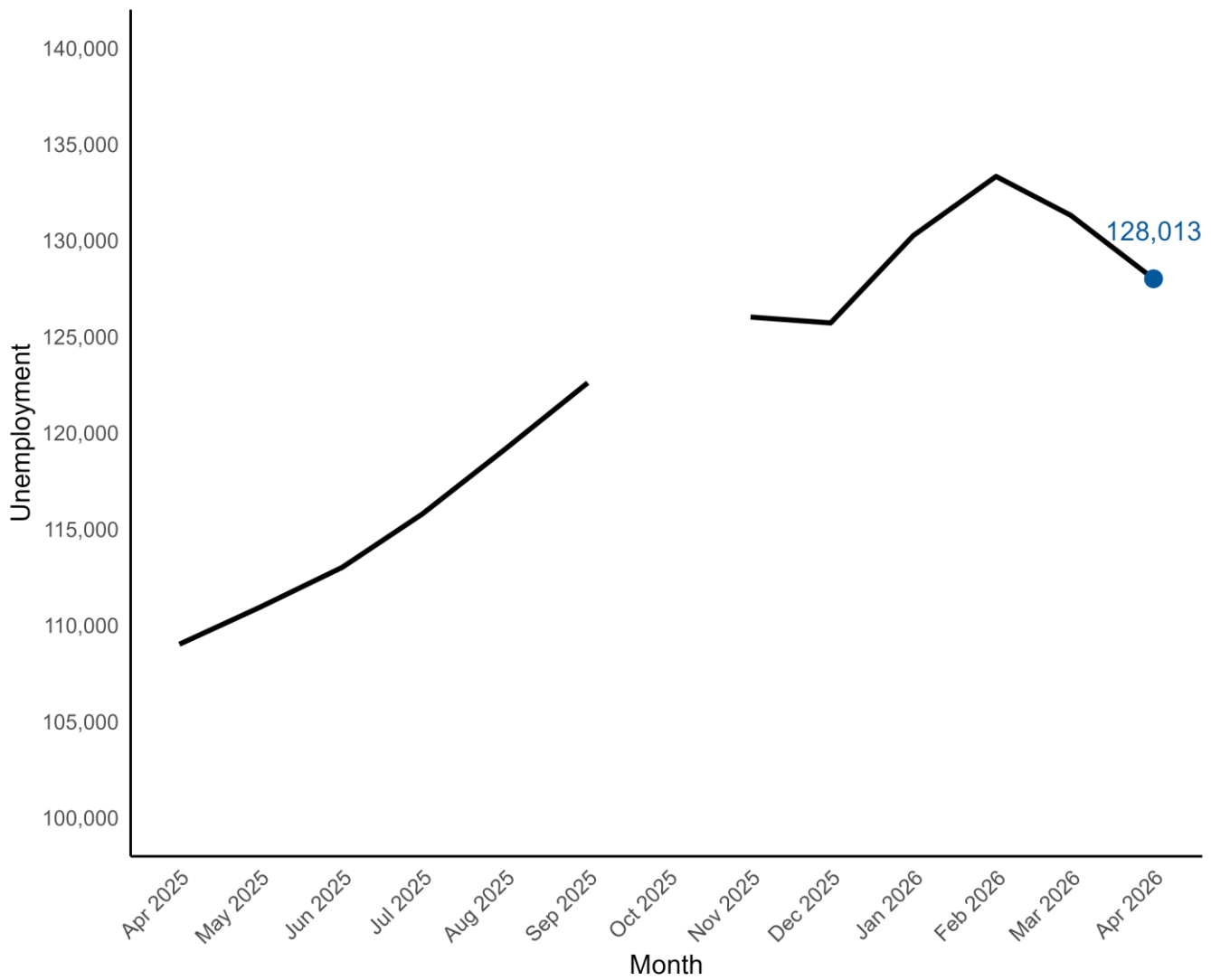
<b>County</b>	<b>Labor Force</b>	<b>Employment</b>	<b>Unemp. Level</b>	<b>Unemp. Rate</b>
Abbeville	10,775	10,368	407	3.8
Aiken	82,857	80,007	2,850	3.4
Allendale	2,824	2,672	152	5.4
Anderson	105,670	102,129	3,541	3.4
Bamberg	5,571	5,314	257	4.6
Barnwell	8,468	8,093	375	4.4
Beaufort	87,459	84,577	2,882	3.3
Berkeley	136,805	132,385	4,420	3.2
Calhoun	6,856	6,599	257	3.7
Charleston	242,970	235,992	6,978	2.9
Cherokee	24,087	22,888	1,199	5.0
Chester	14,827	14,144	683	4.6
Chesterfield	19,669	18,851	818	4.2
Clarendon	12,513	11,923	590	4.7
Colleton	16,327	15,661	666	4.1
Darlington	29,188	27,952	1,236	4.2
Dillon	12,679	12,074	605	4.8
Dorchester	91,017	88,069	2,948	3.2
Edgefield	13,569	13,154	415	3.1
Fairfield	10,055	9,589	466	4.6
Florence	66,624	63,935	2,689	4.0
Georgetown	28,483	27,253	1,230	4.3
Greenville	302,405	292,714	9,691	3.2
Greenwood	30,145	28,898	1,247	4.1
Hampton	8,248	7,923	325	3.9
Horry	182,802	175,102	7,700	4.2
Jasper	15,500	14,952	548	3.5

**Table 4. Unemployment Estimates by County, Not Seasonally Adjusted**

<b>County</b>	<b>Labor Force</b>	<b>Employment</b>	<b>Unemp. Level</b>	<b>Unemp. Rate</b>
Kershaw	34,326	33,085	1,241	3.6
Lancaster	52,135	50,100	2,035	3.9
Laurens	33,091	31,795	1,296	3.9
Lee	6,129	5,795	334	5.4
Lexington	161,929	156,861	5,068	3.1
Marion	12,409	11,721	688	5.5
Marlboro	8,417	7,850	567	6.7
McCormick	3,640	3,485	155	4.3
Newberry	19,515	18,801	714	3.7
Oconee	38,546	37,256	1,290	3.3
Orangeburg	35,968	34,170	1,798	5.0
Pickens	68,684	66,290	2,394	3.5
Richland	217,016	208,815	8,201	3.8
Saluda	9,725	9,437	288	3.0
Spartanburg	175,459	168,861	6,598	3.8
Sumter	43,305	41,283	2,022	4.7
Union	11,189	10,564	625	5.6
Williamsburg	10,683	10,024	659	6.2
York	159,963	154,056	5,907	3.7

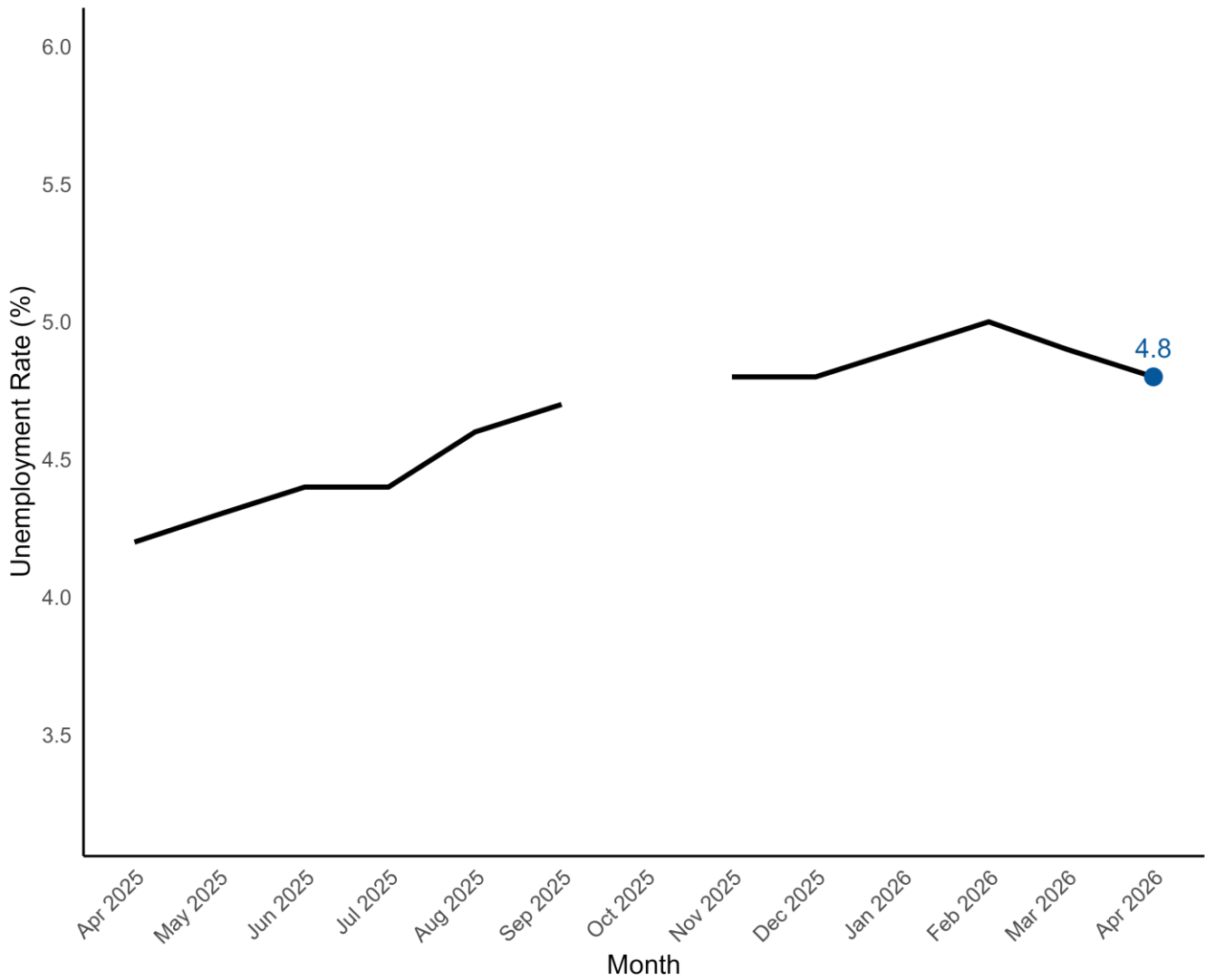
Source: Bureau of Labor Statistics, Local Area Unemployment Statistics. Note: Current month's estimates are preliminary. All data are subject to revision. Unemp = Unemployment.

**Figure 2. Monthly Unemployment, Past 12 Months, Seasonally Adjusted**



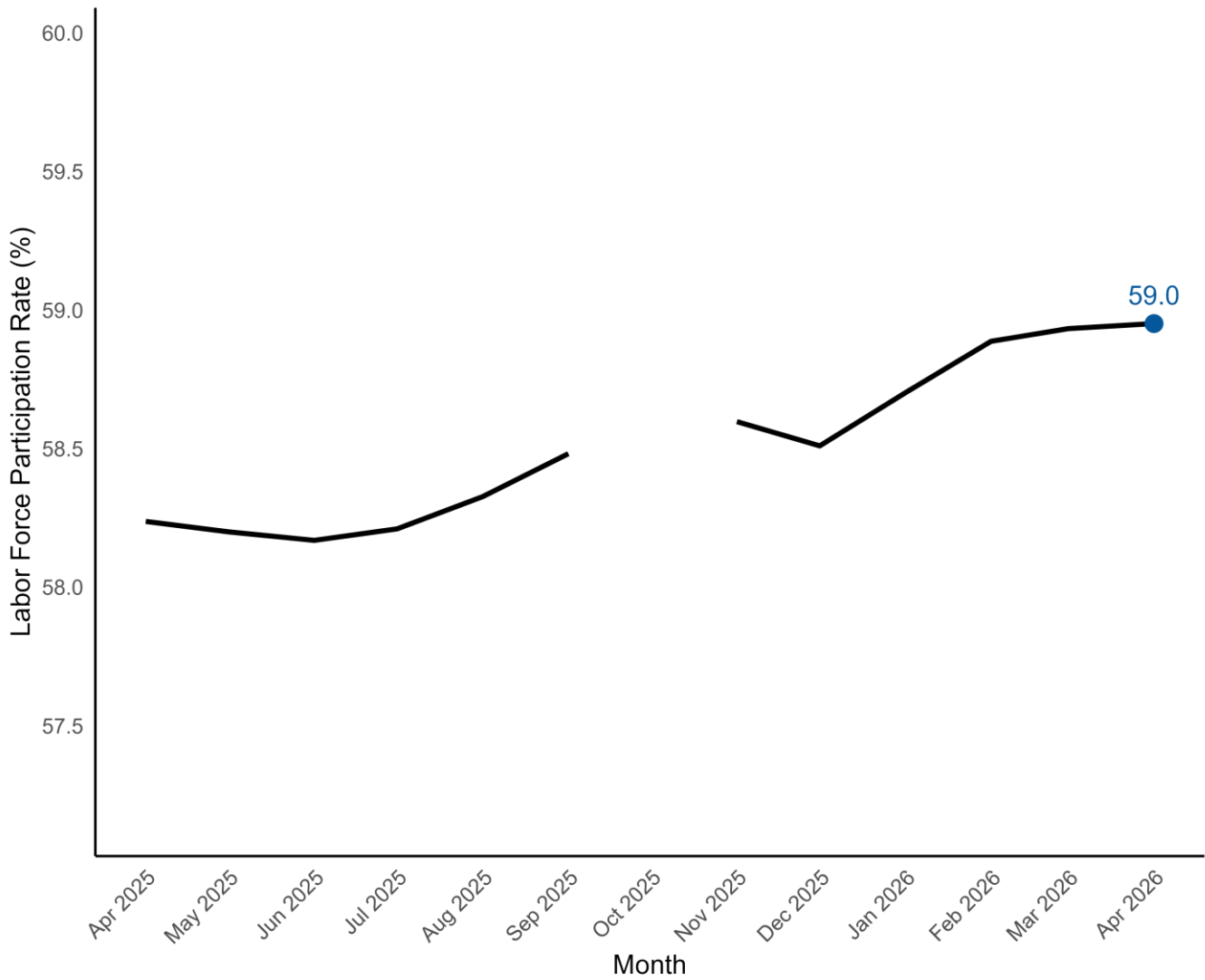
Source: Bureau of Labor Statistics, Local Area Unemployment Statistics.  
Data for October 2025 are unavailable due to the federal government shutdown during that period.

Figure 3. Monthly Unemployment Rate, Past 12 months, Seasonally Adjusted



Source: Bureau of Labor Statistics, Local Area Unemployment Statistics.  
Data for October 2025 are unavailable due to the federal government shutdown during that period.

**Figure 4. Labor Force Participation, Past 12 Months, Seasonally Adjusted**



Source: Bureau of Labor Statistics, Local Area Unemployment Statistics.  
Data for October 2025 are unavailable due to the federal government shutdown during that period.

**Table 5. NonFarm Payroll by Economic Sector, Seasonally Adjusted**

<b>Sector</b>	<b>April 2026</b>	<b>MoM Δ (#)</b>	<b>MoM Δ (%)</b>	<b>YoY Δ (#)</b>	<b>YoY Δ (%)</b>
Total Nonfarm	2,404,700	+5,000	+0.2	+21,200	+0.9
Total Private	2,006,600	+5,500	+0.3	+16,300	+0.8
Goods Producing	395,500	+1,100	+0.3	+5,700	+1.5
Service-Providing	2,009,200	+3,900	+0.2	+15,500	+0.8
Private Service Providing	1,611,100	+4,400	+0.3	+10,600	+0.7
Mining and Logging	4,800	0	0.0	+100	+2.1
Mining, Logging, and Construction	131,800	+900	+0.7	+4,100	+3.2
Construction	127,000	+900	+0.7	+4,000	+3.3
Manufacturing	263,700	+200	+0.1	+1,600	+0.6
Durable Goods	167,200	+100	+0.1	+5,000	+3.1
Non-Durable Goods	96,500	+100	+0.1	-3,400	-3.4
Trade, Transportation, and Utilities	445,400	+700	+0.2	+600	+0.1
Wholesale Trade	86,500	+400	+0.5	+2,300	+2.7
Retail Trade	270,200	+300	+0.1	+1,100	+0.4
Transportation, Warehousing, and Utilities	88,700	0	0.0	-2,800	-3.1
Information	26,000	-400	-1.5	-1,400	-5.1
Financial Activities	123,000	+300	+0.2	+400	+0.3
Finance and Insurance	87,700	+500	+0.6	+1,100	+1.3
Real Estate and Rental and Leasing	35,300	-200	-0.6	-700	-1.9
Professional and Business Services	314,200	+3,600	+1.2	-3,700	-1.2
Professional, Scientific, and Technical	135,000	+200	+0.1	-2,000	-1.5
Management of Companies and Enterprises	25,100	-100	-0.4	+700	+2.9
Administrative and Support and Waste Management and Remediation Services	154,100	+3,500	+2.3	-2,400	-1.5
Private Education and Health Services	323,400	+1,300	+0.4	+9,100	+2.9
Private Educational Services	55,100	+600	+1.1	+1,500	+2.8
Health Care and Social Assistance	268,300	+700	+0.3	+7,600	+2.9

**Table 5. NonFarm Payroll by Economic Sector, Seasonally Adjusted**

Sector	April 2026	MoM $\Delta$ (#)	MoM $\Delta$ (%)	YoY $\Delta$ (#)	YoY $\Delta$ (%)
Leisure and Hospitality	285,400	-400	-0.1	+2,700	+1.0
Arts, Entertainment, and Recreation	37,600	+200	+0.5	-600	-1.6
Accommodation and Food Services	247,800	-600	-0.2	+3,300	+1.3
Other Services	93,700	-700	-0.7	+2,900	+3.2
Government	398,100	-500	-0.1	+4,900	+1.2
Federal Government	35,400	-100	-0.3	-2,600	-6.8
State Government	120,800	-800	-0.7	+2,700	+2.3
Local Government	241,900	+400	+0.2	+4,800	+2.0

Source: Bureau of Labor Statistics, Current Employment Statistics. Note: Current month's estimates are preliminary. All data are subject to revision. MoM = Month-over-Month. YoY = Year-over-Year.  $\Delta$  (#) = Absolute Change.  $\Delta$  (%) = Percent Change.

**Table 6. Average Weekly Earnings by Metropolitan Statistical Area, Total Private, Not Seasonally Adjusted**

Area	April 2026	MoM Δ (#)	MoM Δ (%)	YoY Δ (#)	YoY Δ (%)
Charleston-North Charleston	\$1,254.69	-\$9.51	-0.8	+\$79.23	+6.7
Columbia	\$1,017.39	-\$2.26	-0.2	+\$13.42	+1.3
Florence	\$885.02	+\$21.82	+2.5	+\$114.12	+14.8
Greenville-Anderson-Mauldin	\$1,216.59	+\$6.88	+0.6	+\$93.00	+8.3
Hilton Head Island-Bluffton-Beaufort	\$952.05	+\$6.21	+0.7	+\$72.25	+8.2
Myrtle Beach-Conway-North Myrtle Beach	\$855.55	-\$4.96	-0.6	+\$28.26	+3.4
Spartanburg	\$1,101.09	+\$26.17	+2.4	-\$1.27	-0.1
Sumter	\$972.84	+\$7.91	+0.8	+\$36.20	+3.9

Source: Bureau of Labor Statistics, Current Employment Statistics. Note: Current month's estimates are preliminary. All data are subject to revision. MoM = Month-over-Month. YoY = Year-over-Year. Δ (#) = Absolute Change. Δ (%) = Percent Change.

**Table 7. Average Weekly Hours by Metropolitan Statistical Area, Total Private, Not Seasonally Adjusted**

Area	April 2026	MoM $\Delta$ (#)	MoM $\Delta$ (%)	YoY $\Delta$ (#)	YoY $\Delta$ (%)
Charleston-North Charleston	34.3	-0.7	-2.0	0.6	+1.8
Columbia	33.0	-0.3	-0.9	-0.6	-1.8
Florence	32.3	-0.2	-0.6	-0.8	-2.4
Greenville-Anderson-Mauldin	35.5	-0.6	-1.7	0.8	+2.3
Hilton Head Island-Bluffton-Beaufort	31.4	-0.5	-1.6	-0.1	-0.3
Myrtle Beach-Conway-North Myrtle Beach	32.2	0.4	+1.3	0.6	+1.9
Spartanburg	34.1	-0.8	-2.3	-1.3	-3.7
Sumter	33.5	1.0	+3.1	1.5	+4.7

Source: Bureau of Labor Statistics, Current Employment Statistics. Note: Current month's estimates are preliminary. All data are subject to revision. MoM = Month-over-Month. YoY = Year-over-Year.  $\Delta$  (#) = Absolute Change.  $\Delta$  (%) = Percent Change.

**Table 8. Average Hourly Earnings by Metropolitan Statistical Area, Total Private, Not Seasonally Adjusted**

Area	April 2026	MoM $\Delta$ (#)	MoM $\Delta$ (%)	YoY $\Delta$ (#)	YoY $\Delta$ (%)
Charleston-North Charleston	\$36.58	+\$0.46	+1.3	+\$1.70	+4.9
Columbia	\$30.83	+\$0.21	+0.7	+\$0.95	+3.2
Florence	\$27.40	+\$0.84	+3.2	+\$4.11	+17.6
Greenville-Anderson-Mauldin	\$34.27	+\$0.76	+2.3	+\$1.89	+5.8
Hilton Head Island-Bluffton-Beaufort	\$30.32	+\$0.67	+2.3	+\$2.39	+8.6
Myrtle Beach-Conway-North Myrtle Beach	\$26.57	-\$0.49	-1.8	+\$0.39	+1.5
Spartanburg	\$32.29	+\$1.49	+4.8	+\$1.15	+3.7
Sumter	\$29.04	-\$0.65	-2.2	-\$0.23	-0.8

Source: Bureau of Labor Statistics, Current Employment Statistics. Note: Current month's estimates are preliminary. All data are subject to revision. MoM = Month-over-Month. YoY = Year-over-Year.  $\Delta$  (#) = Absolute Change.  $\Delta$  (%) = Percent Change.

**Table 9. Average Weekly Earnings by Industry, Statewide, Not Seasonally Adjusted**

Industry	April 2026	MoM Δ (#)	MoM Δ (%)	YoY Δ (#)	YoY Δ (%)
Total Private	\$1,127.91	-\$5.71	-0.5	+\$60.84	+5.7
Goods Producing	\$1,461.75	-\$8.00	-0.5	+\$57.97	+4.1
Construction	\$1,363.99	-\$4.51	-0.3	-\$33.19	-2.4
Manufacturing	\$1,480.65	-\$7.28	-0.5	+\$105.94	+7.7
Private Service Providing	\$1,044.26	-\$7.31	-0.7	+\$60.55	+6.2
Trade, Transportation, and Utilities	\$995.34	+\$2.30	+0.2	+\$69.53	+7.5
Financial Activities	\$1,270.37	-\$35.97	-2.8	+\$15.72	+1.3
Professional and Business Services	\$1,494.38	-\$37.62	-2.5	+\$81.85	+5.8
Private Education and Health Services	\$1,018.52	+\$4.86	+0.5	+\$12.12	+1.2
Leisure and Hospitality	\$530.45	+\$18.39	+3.6	+\$37.95	+7.7
Other Services	\$990.31	+\$21.68	+2.2	+\$38.41	+4.0

Source: Bureau of Labor Statistics, Current Employment Statistics. Note: Current month's estimates are preliminary. All data are subject to revision. MoM = Month-over-Month. YoY = Year-over-Year. Δ (#) = Absolute Change. Δ (%) = Percent Change.

**Table 10. Average Weekly Hours by Industry, Statewide, Not Seasonally Adjusted**

Industry	April 2026	MoM Δ (#)	MoM Δ (%)	YoY Δ (#)	YoY Δ (%)
Total Private	33.8	-0.5	-1.5	0.0	0.0
Goods Producing	39.7	-0.8	-2.0	-0.5	-1.2
Construction	40.2	-0.3	-0.7	-1.1	-2.7
Manufacturing	39.4	-1.0	-2.5	0.1	+0.3
Private Service Providing	32.3	-0.5	-1.5	0.1	+0.3
Trade, Transportation, and Utilities	33.2	-0.6	-1.8	0.3	+0.9
Financial Activities	34.7	-1.1	-3.1	-1.9	-5.2
Professional and Business Services	37.5	-0.8	-2.1	-0.4	-1.1
Private Education and Health Services	31.7	-0.5	-1.6	0.6	+1.9
Leisure and Hospitality	25.7	0.5	+2.0	0.7	+2.8
Other Services	31.7	0.2	+0.6	-1.0	-3.1

Source: Bureau of Labor Statistics, Current Employment Statistics. Note: Current month's estimates are preliminary. All data are subject to revision. MoM = Month-over-Month. YoY = Year-over-Year. Δ (#) = Absolute Change. Δ (%) = Percent Change.

**Table 11. Average Hourly Earnings by Industry, Statewide, Not Seasonally Adjusted**

<b>Industry</b>	<b>April 2026</b>	<b>MoM Δ (#)</b>	<b>MoM Δ (%)</b>	<b>YoY Δ (#)</b>	<b>YoY Δ (%)</b>
Total Private	\$33.37	+\$0.32	+1.0	+\$1.80	+5.7
Goods Producing	\$36.82	+\$0.53	+1.5	+\$1.90	+5.4
Construction	\$33.93	+\$0.14	+0.4	+\$0.10	+0.3
Manufacturing	\$37.58	+\$0.75	+2.0	+\$2.60	+7.4
Private Service Providing	\$32.33	+\$0.27	+0.8	+\$1.78	+5.8
Trade, Transportation, and Utilities	\$29.98	+\$0.60	+2.0	+\$1.84	+6.5
Financial Activities	\$36.61	+\$0.12	+0.3	+\$2.33	+6.8
Professional and Business Services	\$39.85	-\$0.15	-0.4	+\$2.58	+6.9
Private Education and Health Services	\$32.13	+\$0.65	+2.1	-\$0.23	-0.7
Leisure and Hospitality	\$20.64	+\$0.32	+1.6	+\$0.94	+4.8
Other Services	\$31.24	+\$0.49	+1.6	+\$2.13	+7.3

Source: Bureau of Labor Statistics, Current Employment Statistics. Note: Current month's estimates are preliminary. All data are subject to revision. YoY = Year-over-Year. Δ (#) = Absolute Change. Δ (%) = Percent Change.

**Table 12. Charleston-North Charleston MSA: Nonfarm Payroll by Economic Sector, NSA**

Sector	April 2026	MoM Δ (#)	MoM Δ (%)	YoY Δ (#)	YoY Δ (%)
Total Nonfarm	434,200	+3,900	+0.9	+1,100	+0.3
Total Private	360,700	+3,300	+0.9	-200	-0.1
Goods Producing	61,200	+200	+0.3	+2,000	+3.4
Service-Providing	373,000	+3,700	+1.0	-900	-0.2
Private Service Providing	299,500	+3,100	+1.0	-2,200	-0.7
Mining, Logging, and Construction	26,800	+100	+0.4	+1,900	+7.6
Manufacturing	34,400	+100	+0.3	+100	+0.3
Trade, Transportation, and Utilities	76,800	+400	+0.5	-600	-0.8
Wholesale Trade	13,700	-100	-0.7	+200	+1.5
Retail Trade	45,000	+500	+1.1	+100	+0.2
General Merchandise Stores	8,500	+100	+1.2	0	0.0
Transportation, Warehousing, and Utilities	18,100	0	0.0	-900	-4.7
Information	7,600	-100	-1.3	-400	-5.0
Financial Activities	22,100	+200	+0.9	-400	-1.8
Professional and Business Services	69,600	+2,000	+3.0	-900	-1.3
Administrative and Support and Waste Management	28,100	+1,000	+3.7	-700	-2.4
Private Education and Health Services	51,400	-200	-0.4	+500	+1.0
Leisure and Hospitality	55,100	+900	+1.7	-600	-1.1
Accommodation and Food Services	48,000	+600	+1.3	-200	-0.4
Food Services and Drinking Places	39,500	+500	+1.3	-500	-1.2
Other Services	16,900	-100	-0.6	+200	+1.2
Government	73,500	+600	+0.8	+1,300	+1.8
Federal Government	11,500	+100	+0.9	-700	-5.7
State Government	30,300	+300	+1.0	+2,000	+7.1
Local Government	31,700	+200	+0.6	0	0.0

Source: Bureau of Labor Statistics, Current Employment Statistics. Note: Current month's estimates are preliminary. All data are subject to revision. MSA = Metropolitan Statistical Area. NSA = Not Seasonally Adjusted. YoY = Year-over-Year. Δ (#) = Absolute Change. Δ (%) = Percent Change.

**Table 13. Columbia MSA: Nonfarm Payroll by Economic Sector, NSA**

Sector	April 2026	MoM Δ (#)	MoM Δ (%)	YoY Δ (#)	YoY Δ (%)
Total Nonfarm	435,400	+1,500	+0.3	+200	+0.0
Total Private	348,000	+1,900	+0.5	-100	-0.0
Goods Producing	51,600	+300	+0.6	+300	+0.6
Service-Providing	383,800	+1,200	+0.3	-100	-0.0
Private Service Providing	296,400	+1,600	+0.5	-400	-0.1
Mining, Logging, and Construction	19,900	+300	+1.5	+900	+4.7
Manufacturing	31,700	0	0.0	-600	-1.9
Trade, Transportation, and Utilities	77,900	-100	-0.1	+1,100	+1.4
Wholesale Trade	15,500	-100	-0.6	-100	-0.6
Retail Trade	45,000	+200	+0.4	+300	+0.7
Transportation, Warehousing, and Utilities	17,400	-200	-1.1	+900	+5.5
Information	4,100	-100	-2.4	-300	-6.8
Financial Activities	34,600	0	0.0	-500	-1.4
Credit Intermediation and Related Activities including Monetary Authorities - Central Bank	6,000	0	0.0	-100	-1.6
Professional and Business Services	54,200	+900	+1.7	-2,000	-3.6
Administrative and Support and Waste Management	28,400	+600	+2.2	-500	-1.7
Private Education and Health Services	66,400	+500	+0.8	+1,500	+2.3
Leisure and Hospitality	40,900	+500	+1.2	-800	-1.9
Food Services and Drinking Places	34,700	+200	+0.6	0	0.0
Other Services	18,300	-100	-0.5	+600	+3.4
Government	87,400	-400	-0.5	+300	+0.3
Federal Government	11,200	0	0.0	-800	-6.7
State Government	38,700	-300	-0.8	+400	+1.0
Local Government	37,500	-100	-0.3	+700	+1.9

Source: Bureau of Labor Statistics, Current Employment Statistics. Note: Current month's estimates are preliminary. All data are subject to revision. MSA = Metropolitan Statistical Area. NSA = Not Seasonally Adjusted. YoY = Year-over-Year. Δ (#) = Absolute Change. Δ (%) = Percent Change.

**Table 14. Greenville-Anderson-Mauldin MSA: Nonfarm Payroll by Economic Sector, NSA**

Sector	April 2026	MoM Δ (#)	MoM Δ (%)	YoY Δ (#)	YoY Δ (%)
Total Nonfarm	485,100	+3,400	+0.7	+6,900	+1.4
Total Private	419,400	+3,500	+0.8	+6,200	+1.5
Goods Producing	86,300	+500	+0.6	0	0.0
Service-Providing	398,800	+2,900	+0.7	+6,900	+1.8
Private Service Providing	333,100	+3,000	+0.9	+6,200	+1.9
Mining, Logging, and Construction	25,300	+200	+0.8	-200	-0.8
Manufacturing	61,000	+300	+0.5	+200	+0.3
Trade, Transportation, and Utilities	84,200	+300	+0.4	+700	+0.8
Wholesale Trade	21,300	-100	-0.5	+500	+2.4
Retail Trade	49,700	+400	+0.8	+600	+1.2
Transportation, Warehousing, and Utilities	13,200	0	0.0	-400	-2.9
Information	5,300	-100	-1.9	-300	-5.4
Financial Activities	22,700	0	0.0	0	0.0
Professional and Business Services	78,900	+2,000	+2.6	+1,200	+1.5
Professional, Scientific, and Technical Services	34,100	+800	+2.4	0	0.0
Management of Companies and Enterprises	6,800	0	0.0	0	0.0
Administrative and Support and Waste Management	38,000	+1,200	+3.3	+1,200	+3.3
Private Education and Health Services	71,100	+200	+0.3	+2,300	+3.3
Educational Services	16,600	+200	+1.2	+500	+3.1
Health Care and Social Assistance	54,500	0	0.0	+1,800	+3.4
Leisure and Hospitality	53,400	+800	+1.5	+2,100	+4.1
Other Services	17,500	-200	-1.1	+200	+1.2
Government	65,700	-100	-0.2	+700	+1.1
Federal Government	2,900	0	0.0	-200	-6.5
State Government	15,800	-100	-0.6	-100	-0.6
Local Government	47,000	0	0.0	+1,000	+2.2

Source: Bureau of Labor Statistics, Current Employment Statistics. Note: Current month's estimates are preliminary. All data are subject to revision. MSA = Metropolitan Statistical Area. NSA = Not Seasonally Adjusted. YoY = Year-over-Year. Δ (#) = Absolute Change. Δ (%) = Percent Change.

**Table 15. Myrtle Beach-Conway-North Myrtle Beach MSA: Nonfarm Payroll by Economic Sector, NSA**

<b>Sector</b>	<b>April 2026</b>	<b>MoM Δ (#)</b>	<b>MoM Δ (%)</b>	<b>YoY Δ (#)</b>	<b>YoY Δ (%)</b>
Total Nonfarm	159,700	+3,300	+2.1	+2,600	+1.7
Total Private	137,000	+3,300	+2.5	+1,900	+1.4
Goods Producing	13,900	-100	-0.7	+400	+3.0
Service-Providing	145,800	+3,400	+2.4	+2,200	+1.5
Private Service Providing	123,100	+3,400	+2.8	+1,500	+1.2
Mining, Logging, and Construction	10,400	-100	-1.0	+400	+4.0
Manufacturing	3,500	0	0.0	0	0.0
Trade, Transportation, and Utilities	33,300	+200	+0.6	+400	+1.2
Wholesale Trade	3,500	0	0.0	0	0.0
Retail Trade	26,800	+200	+0.8	+500	+1.9
Transportation, Warehousing, and Utilities	3,000	0	0.0	-100	-3.2
Information	1,700	-100	-5.6	-200	-10.5
Financial Activities	8,700	+100	+1.2	0	0.0
Professional and Business Services	15,900	+300	+1.9	-300	-1.9
Private Education and Health Services	18,700	+100	+0.5	+600	+3.3
Leisure and Hospitality	38,800	+2,800	+7.8	+800	+2.1
Accommodation and Food Services	33,300	+2,300	+7.4	+1,100	+3.4
Food Services and Drinking Places	24,900	+1,500	+6.4	-200	-0.8
Other Services	6,000	0	0.0	+200	+3.4
Government	22,700	0	0.0	+700	+3.2
Federal Government	1,100	0	0.0	0	0.0
State Government	4,800	-100	-2.0	0	0.0
Local Government	16,800	+100	+0.6	+700	+4.3

Source: Bureau of Labor Statistics, Current Employment Statistics. Note: Current month's estimates are preliminary. All data are subject to revision. MSA = Metropolitan Statistical Area. NSA = Not Seasonally Adjusted. YoY = Year-over-Year. Δ (#) = Absolute Change. Δ (%) = Percent Change.

**Table 16. Spartanburg MSA: Nonfarm Payroll by Economic Sector, NSA**

<b>Sector</b>	<b>April 2026</b>	<b>MoM Δ (#)</b>	<b>MoM Δ (%)</b>	<b>YoY Δ (#)</b>	<b>YoY Δ (%)</b>
Total Nonfarm	178,900	+400	+0.2	+1,600	+0.9
Total Private	149,100	+1,000	+0.7	+1,600	+1.1
Goods Producing	49,700	+100	+0.2	+1,400	+2.9
Service-Providing	129,200	+300	+0.2	+200	+0.2
Private Service Providing	99,400	+900	+0.9	+200	+0.2
Mining, Logging, and Construction	8,400	0	0.0	+200	+2.4
Manufacturing	41,300	+100	+0.2	+1,200	+3.0
Durable Goods	29,900	+200	+0.7	+1,600	+5.7
Non-Durable Goods	11,400	-100	-0.9	-400	-3.4
Trade, Transportation, and Utilities	37,000	+100	+0.3	-300	-0.8
Wholesale Trade	8,600	0	0.0	+300	+3.6
Retail Trade	19,400	+100	+0.5	+200	+1.0
Transportation, Warehousing, and Utilities	9,000	0	0.0	-800	-8.2
Information	800	0	0.0	-100	-11.1
Financial Activities	5,700	0	0.0	-100	-1.7
Professional and Business Services	16,800	+500	+3.1	+500	+3.1
Private Education and Health Services	17,800	+100	+0.6	+100	+0.6
Leisure and Hospitality	15,200	+200	+1.3	0	0.0
Other Services	6,100	0	0.0	+100	+1.7
Government	29,800	-600	-2.0	0	0.0
Federal Government	700	0	0.0	0	0.0
State Government	4,200	-100	-2.3	0	0.0
Local Government	24,900	-500	-2.0	0	0.0

Source: Bureau of Labor Statistics, Current Employment Statistics. Note: Current month's estimates are preliminary. All data are subject to revision. MSA = Metropolitan Statistical Area. NSA = Not Seasonally Adjusted. YoY = Year-over-Year. Δ (#) = Absolute Change. Δ (%) = Percent Change.

**Table 17. Florence MSA: Nonfarm Payroll by Economic Sector, NSA**

<b>Sector</b>	<b>April 2026</b>	<b>MoM <math>\Delta</math> (#)</b>	<b>MoM <math>\Delta</math> (%)</b>	<b>YoY <math>\Delta</math> (#)</b>	<b>YoY <math>\Delta</math> (%)</b>
Total Nonfarm	96,400	+500	+0.5	-400	-0.4
Total Private	76,700	+400	+0.5	-700	-0.9
Goods Producing	15,000	+200	+1.4	-200	-1.3
Service-Providing	81,400	+300	+0.4	-200	-0.2
Private Service Providing	61,700	+200	+0.3	-500	-0.8
Trade, Transportation, and Utilities	19,700	+200	+1.0	-400	-2.0
Government	19,700	+100	+0.5	+300	+1.5
Federal Government	600	-100	-14.3	-100	-14.3
State Government	5,600	+100	+1.8	+200	+3.7
Local Government	13,500	+100	+0.7	+200	+1.5

Source: Bureau of Labor Statistics, Current Employment Statistics. Note: Current month's estimates are preliminary. All data are subject to revision. MSA = Metropolitan Statistical Area. NSA = Not Seasonally Adjusted. YoY = Year-over-Year.  $\Delta$  (#) = Absolute Change.  $\Delta$  (%) = Percent Change.

**Table 18. Hilton Head Island-Bluffton-Beaufort MSA: Nonfarm Payroll by Economic Sector, NSA**

Sector	April 2026	MoM Δ (#)	MoM Δ (%)	YoY Δ (#)	YoY Δ (%)
Total Nonfarm	89,400	+600	+0.7	+1,000	+1.1
Total Private	76,500	+800	+1.1	+800	+1.1
Goods Producing	8,300	0	0.0	+200	+2.5
Service-Providing	81,100	+600	+0.7	+800	+1.0
Private Service Providing	68,200	+800	+1.2	+600	+0.9
Government	12,900	-200	-1.5	+200	+1.6

Source: Bureau of Labor Statistics, Current Employment Statistics. Note: Current month's estimates are preliminary. All data are subject to revision. MSA = Metropolitan Statistical Area. NSA = Not Seasonally Adjusted. YoY = Year-over-Year. Δ (#) = Absolute Change. Δ (%) = Percent Change.

**Table 19. Sumter MSA: Nonfarm Payroll by Economic Sector, NSA**

<b>Sector</b>	<b>April 2026</b>	<b>MoM Δ (#)</b>	<b>MoM Δ (%)</b>	<b>YoY Δ (#)</b>	<b>YoY Δ (%)</b>
Total Nonfarm	37,500	0	0.0	-700	-1.8
Total Private	31,400	0	0.0	-600	-1.9
Goods Producing	8,700	0	0.0	-200	-2.2
Service-Providing	28,800	0	0.0	-500	-1.7
Private Service Providing	22,700	0	0.0	-400	-1.7
Manufacturing	6,100	0	0.0	0	0.0
Government	6,100	0	0.0	-100	-1.6
Federal Government	1,200	0	0.0	-200	-14.3
State Government	1,400	0	0.0	0	0.0
Local Government	3,500	0	0.0	+100	+2.9

Source: Bureau of Labor Statistics, Current Employment Statistics. Note: Current month's estimates are preliminary. All data are subject to revision. MSA = Metropolitan Statistical Area. NSA = Not Seasonally Adjusted. YoY = Year-over-Year. Δ (#) = Absolute Change. Δ (%) = Percent Change.

For more information on South Carolina's LMI division and our funding sources, visit:

<https://lmi.sc.gov/About-Us/>.