

# South Carolina Data Trends: February 2026

The South Carolina Department of Employment and Workforce, through its Labor Market Information (LMI) Division, summarizes the latest workforce data trends as of February 2026, providing key insights into employment and wages for the state and each of its metro areas. For questions or additional information, please contact the LMI Division at [lmicustomerservice@dew.sc.gov](mailto:lmicustomerservice@dew.sc.gov).

**Table 1. Labor Market Snapshot**

Metric	February 2026	MoM $\Delta$ (#)	YoY $\Delta$ (#)
Unemployment	133,363	+3,103	+26,498
Employment	2,524,723	+8,515	+44,884
Labor Force	2,658,086	+11,618	+71,382

Source: Bureau of Labor Statistics, Local Area Unemployment Statistics. Note: Current month's estimates are preliminary. All data are subject to revision. Estimates are seasonally adjusted. MoM = Month-over-Month. YoY = Year-over-Year.  $\Delta$  (#) = Absolute Change.

**Table 2. Nonagricultural Employment by Industry, Seasonally Adjusted**

<b>Industry</b>	<b>February 2026</b>	<b>MoM Δ (#)</b>	<b>MoM Δ (%)</b>	<b>YoY Δ (#)</b>	<b>YoY Δ (%)</b>
Total Nonfarm	2,398,100	-5,100	-0.2	+20,200	+0.8
Construction	125,800	-200	-0.2	+3,900	+3.2
Manufacturing	264,200	+2,600	+1.0	+2,100	+0.8
Trade, Transportation, and Utilities	443,500	-2,400	-0.5	-1,700	-0.4
Information	26,600	-500	-1.8	-900	-3.3
Financial Activities	123,700	-100	-0.1	+1,300	+1.1
Professional and Business Services	311,200	0	0.0	-5,100	-1.6
Private Education and Health Services	320,500	-300	-0.1	+8,700	+2.8
Leisure and Hospitality	285,700	-3,000	-1.0	+3,800	+1.3
Other Services	93,000	+300	+0.3	+2,700	+3.0
Government	399,100	-1,500	-0.4	+5,300	+1.3

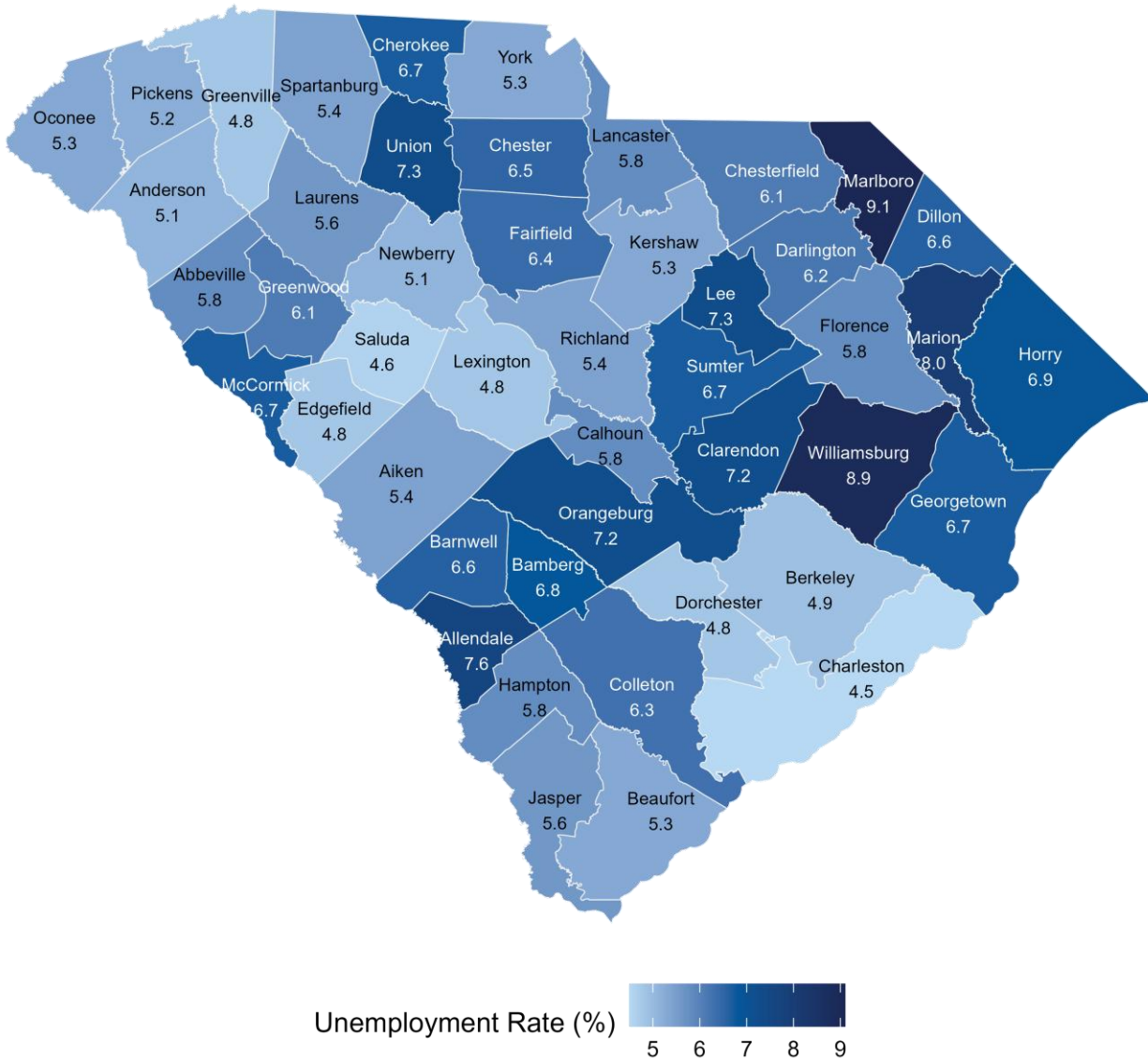
Source: Bureau of Labor Statistics, Current Employment Statistics. Note: Current month's estimates are preliminary. All data are subject to revision. MoM = Month-over-Month. YoY = Year-over-Year. Δ (#) = Absolute Change. Δ (%) = Percent Change.

**Table 3. Nonagricultural Employment by Metropolitan Statistical Area, Seasonally Adjusted**

Area	February 2026	MoM $\Delta$ (#)	MoM $\Delta$ (%)	YoY $\Delta$ (#)	YoY $\Delta$ (%)
Statewide	2,398,100	-5,100	-0.2	+20,200	+0.8
Charleston/North Charleston	429,800	-2,200	-0.5	-1,700	-0.4
Columbia	434,700	-1,400	-0.3	+500	+0.1
Florence	96,300	0	0.0	-100	-0.1
Greenville/Anderson/Mauldin	482,300	-2,300	-0.5	+5,500	+1.2
Hilton Head Island-Bluffton-Beaufort	89,600	-200	-0.2	+1,100	+1.2
Myrtle Beach	158,700	-200	-0.1	+2,800	+1.8
Spartanburg	178,400	-300	-0.2	+500	+0.3
Sumter	37,700	-200	-0.5	-200	-0.5

Source: Bureau of Labor Statistics, Current Employment Statistics. Note: Current month's estimates are preliminary. All data are subject to revision. MoM = Month-over-Month. YoY = Year-over-Year.  $\Delta$  (#) = Absolute Change.  $\Delta$  (%) = Percent Change.

Figure 1. Unemployment Rate by County, Not Seasonally Adjusted



Source: Bureau of Labor Statistics, Local Area Unemployment Statistics.

**Table 4. Unemployment Estimates by County, Not Seasonally Adjusted**

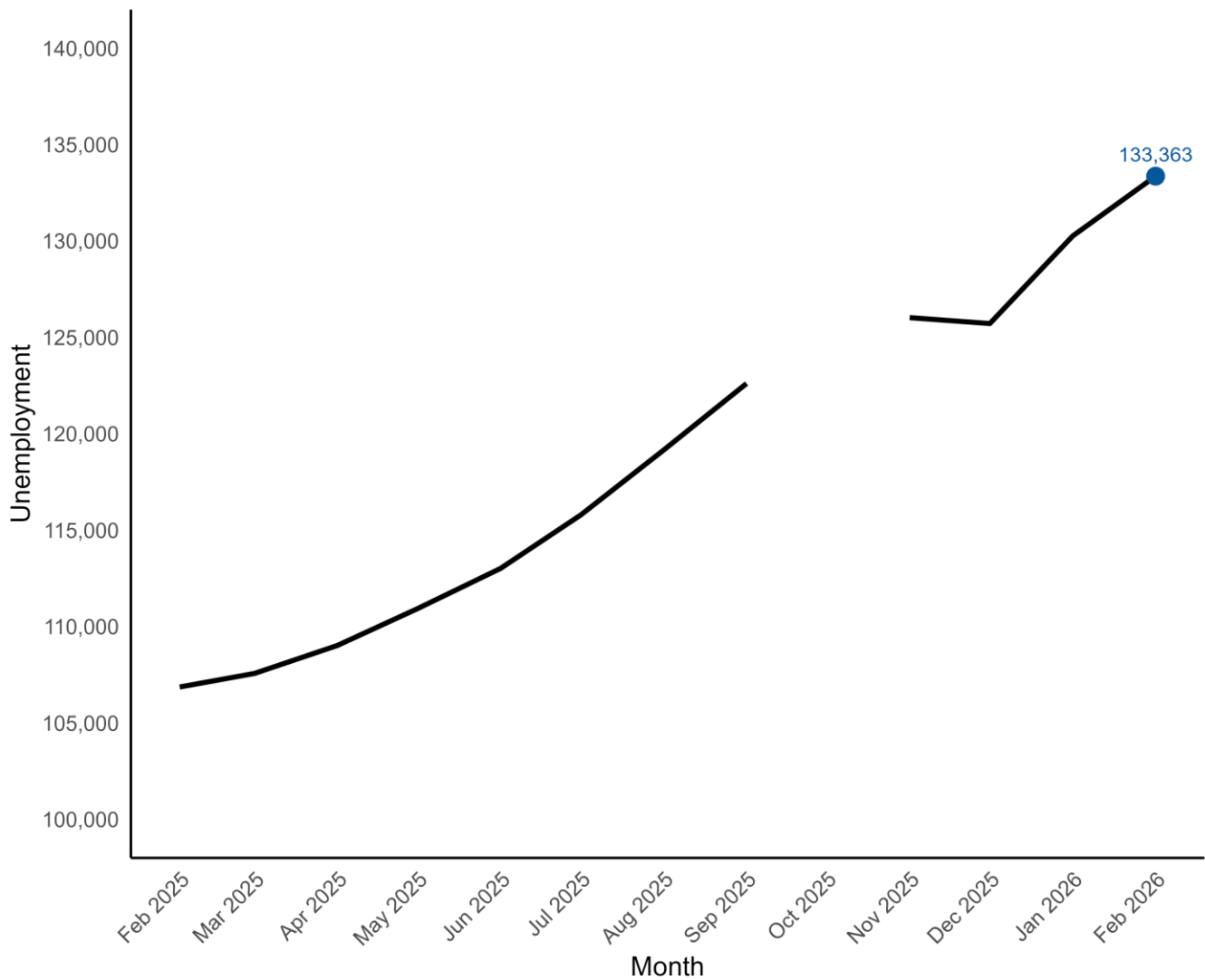
<b>County</b>	<b>Labor Force</b>	<b>Employment</b>	<b>Unemp. Level</b>	<b>Unemp. Rate</b>
Abbeville	10,963	10,332	631	5.8
Aiken	82,495	78,048	4,447	5.4
Allendale	2,972	2,745	227	7.6
Anderson	105,973	100,590	5,383	5.1
Bamberg	5,713	5,322	391	6.8
Barnwell	8,664	8,089	575	6.6
Beaufort	87,610	82,965	4,645	5.3
Berkeley	135,906	129,258	6,648	4.9
Calhoun	6,974	6,571	403	5.8
Charleston	240,912	230,135	10,777	4.5
Cherokee	24,529	22,882	1,647	6.7
Chester	14,960	13,990	970	6.5
Chesterfield	19,893	18,682	1,211	6.1
Clarendon	12,557	11,659	898	7.2
Colleton	16,320	15,291	1,029	6.3
Darlington	29,449	27,629	1,820	6.2
Dillon	12,863	12,008	855	6.6
Dorchester	90,200	85,880	4,320	4.8
Edgefield	13,580	12,928	652	4.8
Fairfield	10,127	9,475	652	6.4
Florence	66,983	63,098	3,885	5.8
Georgetown	28,618	26,703	1,915	6.7
Greenville	302,531	288,034	14,497	4.8
Greenwood	30,671	28,811	1,860	6.1
Hampton	8,562	8,066	496	5.8
Horry	179,060	166,753	12,307	6.9
Jasper	15,630	14,761	869	5.6

**Table 4. Unemployment Estimates by County, Not Seasonally Adjusted**

<b>County</b>	<b>Labor Force</b>	<b>Employment</b>	<b>Unemp. Level</b>	<b>Unemp. Rate</b>
Kershaw	34,628	32,794	1,834	5.3
Lancaster	52,332	49,280	3,052	5.8
Laurens	33,216	31,341	1,875	5.6
Lee	6,177	5,725	452	7.3
Lexington	162,765	155,023	7,742	4.8
Marion	12,583	11,577	1,006	8.0
Marlboro	8,737	7,942	795	9.1
McCormick	3,680	3,432	248	6.7
Newberry	19,853	18,850	1,003	5.1
Oconee	38,926	36,879	2,047	5.3
Orangeburg	36,964	34,314	2,650	7.2
Pickens	68,874	65,282	3,592	5.2
Richland	218,381	206,520	11,861	5.4
Saluda	9,935	9,481	454	4.6
Spartanburg	176,333	166,743	9,590	5.4
Sumter	44,045	41,112	2,933	6.7
Union	11,292	10,471	821	7.3
Williamsburg	11,122	10,129	993	8.9
York	160,090	151,574	8,516	5.3

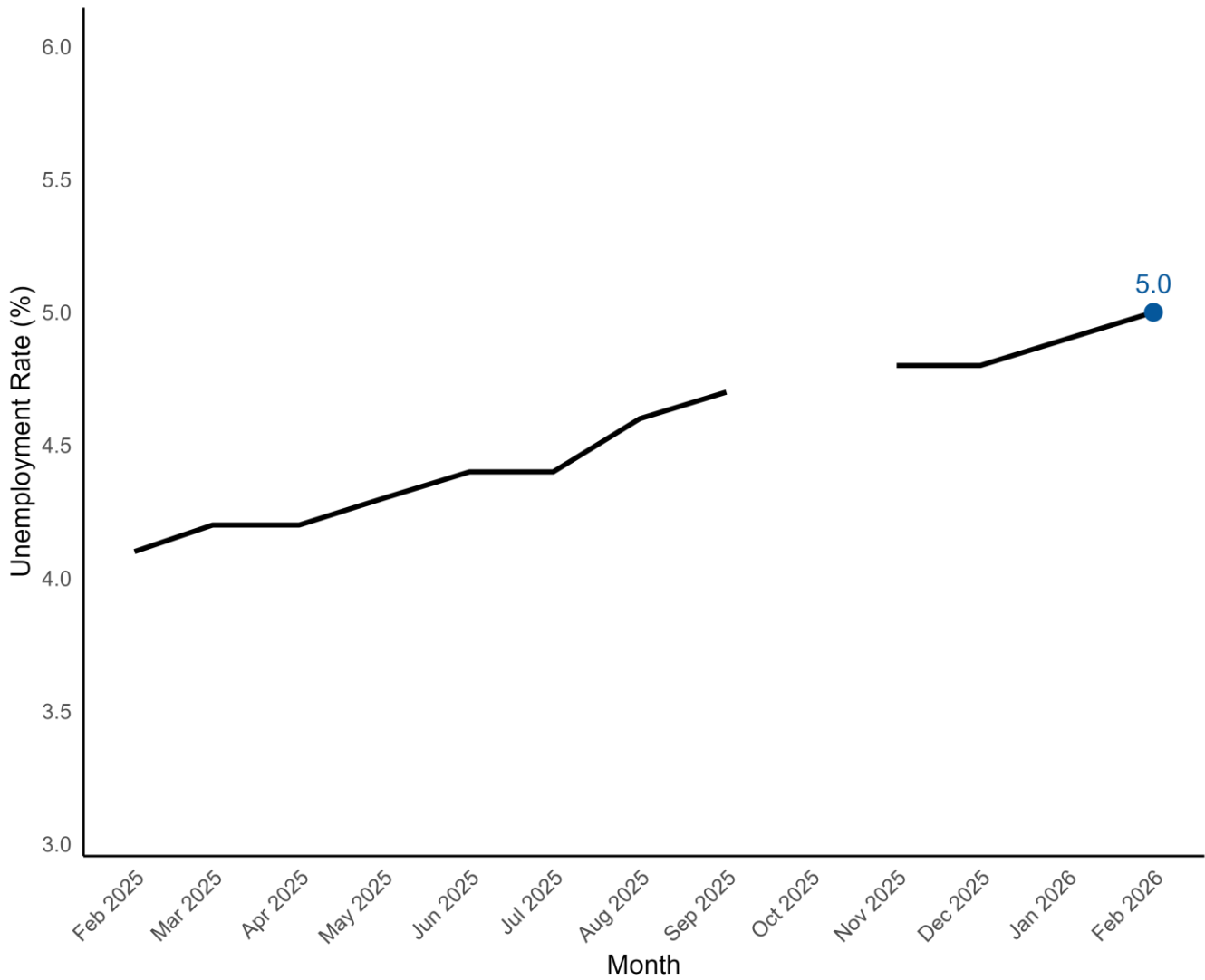
Source: Bureau of Labor Statistics, Local Area Unemployment Statistics. Note: Current month's estimates are preliminary. All data are subject to revision. Unemp = Unemployment.

**Figure 2. Monthly Unemployment, Past 12 Months, Seasonally Adjusted**



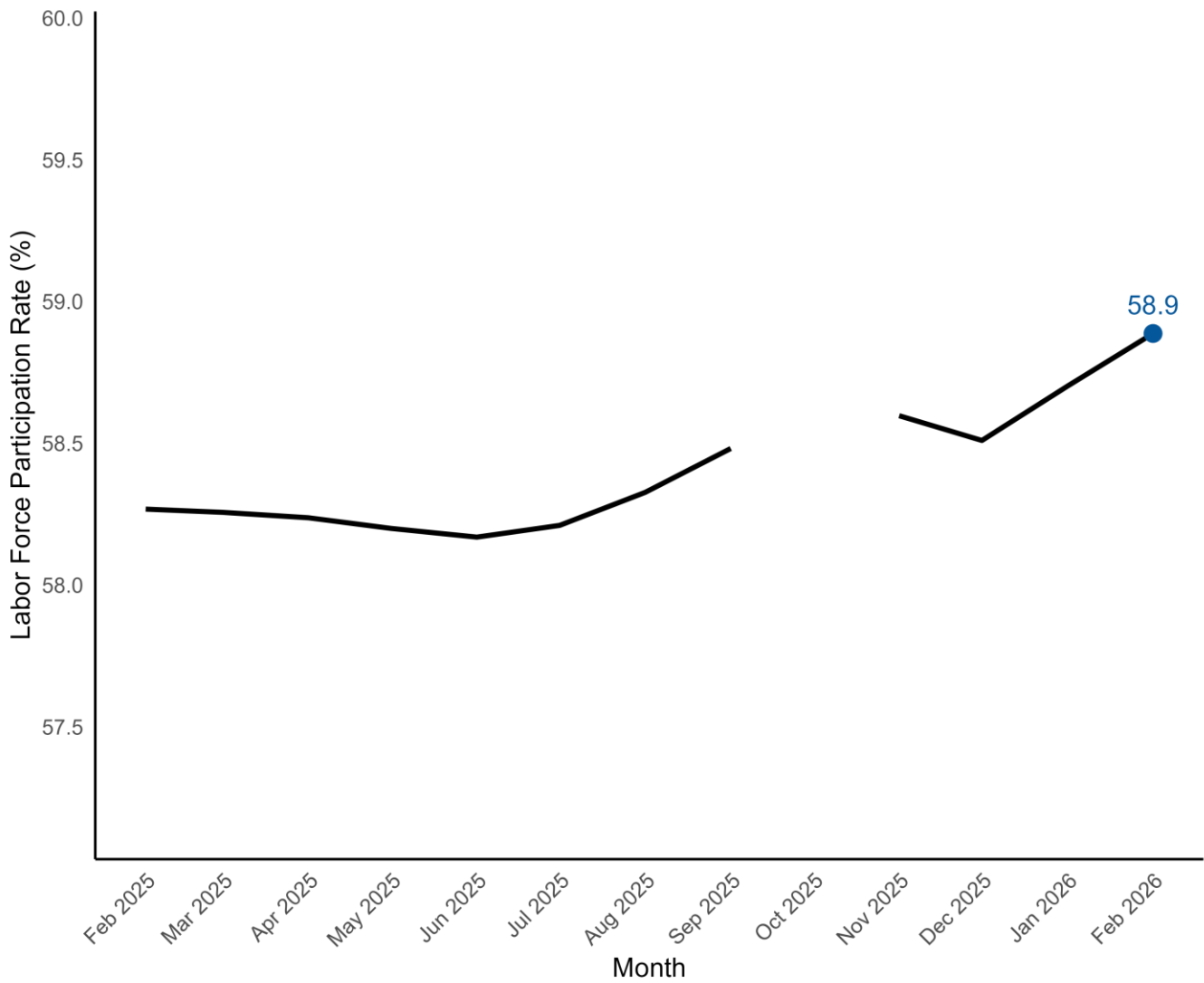
Source: Bureau of Labor Statistics, Local Area Unemployment Statistics.  
**Data for October 2025 are unavailable due to the federal government shutdown during that period.**

Figure 3. Monthly Unemployment Rate, Past 12 months, Seasonally Adjusted



Source: Bureau of Labor Statistics, Local Area Unemployment Statistics.  
Data for October 2025 are unavailable due to the federal government shutdown during that period.

**Figure 4. Labor Force Participation, Past 12 Months, Seasonally Adjusted**



Source: Bureau of Labor Statistics, Local Area Unemployment Statistics.  
**Data for October 2025 are unavailable due to the federal government shutdown during that period.**

**Table 5. NonFarm Payroll by Economic Sector, Seasonally Adjusted**

<b>Sector</b>	<b>February 2026</b>	<b>MoM Δ (#)</b>	<b>MoM Δ (%)</b>	<b>YoY Δ (#)</b>	<b>YoY Δ (%)</b>
Total Nonfarm	2,398,100	-5,100	-0.2	+20,200	+0.8
Total Private	1,999,000	-3,600	-0.2	+14,900	+0.8
Goods Producing	394,800	+2,400	+0.6	+6,100	+1.6
Service-Providing	2,003,300	-7,500	-0.4	+14,100	+0.7
Private Service Providing	1,604,200	-6,000	-0.4	+8,800	+0.6
Mining and Logging	4,800	0	0.0	+100	+2.1
Mining, Logging, and Construction	130,600	-200	-0.2	+4,000	+3.2
Construction	125,800	-200	-0.2	+3,900	+3.2
Manufacturing	264,200	+2,600	+1.0	+2,100	+0.8
Durable Goods	166,900	+2,000	+1.2	+5,200	+3.2
Non-Durable Goods	97,300	+600	+0.6	-3,100	-3.1
Trade, Transportation, and Utilities	443,500	-2,400	-0.5	-1,700	-0.4
Wholesale Trade	85,000	+700	+0.8	+1,000	+1.2
Retail Trade	269,600	-400	-0.1	+600	+0.2
Transportation, Warehousing, and Utilities	88,900	-2,700	-2.9	-3,300	-3.6
Information	26,600	-500	-1.8	-900	-3.3
Financial Activities	123,700	-100	-0.1	+1,300	+1.1
Finance and Insurance	87,100	-200	-0.2	+700	+0.8
Real Estate and Rental and Leasing	36,600	+100	+0.3	+600	+1.7
Professional and Business Services	311,200	0	0.0	-5,100	-1.6
Professional, Scientific, and Technical	135,300	-500	-0.4	-1,500	-1.1
Management of Companies and Enterprises	25,100	+100	+0.4	+1,400	+5.9
Administrative and Support and Waste Management and Remediation Services	150,800	+400	+0.3	-5,000	-3.2
Private Education and Health Services	320,500	-300	-0.1	+8,700	+2.8
Private Educational Services	54,000	0	0.0	+800	+1.5
Health Care and Social Assistance	266,500	-300	-0.1	+7,900	+3.1

**Table 5. NonFarm Payroll by Economic Sector, Seasonally Adjusted**

<b>Sector</b>	<b>February 2026</b>	<b>MoM Δ (#)</b>	<b>MoM Δ (%)</b>	<b>YoY Δ (#)</b>	<b>YoY Δ (%)</b>
Leisure and Hospitality	285,700	-3,000	-1.0	+3,800	+1.3
Arts, Entertainment, and Recreation	36,800	-100	-0.3	-1,000	-2.6
Accommodation and Food Services	248,900	-2,900	-1.2	+4,800	+2.0
Other Services	93,000	+300	+0.3	+2,700	+3.0
Government	399,100	-1,500	-0.4	+5,300	+1.3
Federal Government	35,600	+100	+0.3	-2,700	-7.0
State Government	122,000	-1,500	-1.2	+4,400	+3.7
Local Government	241,500	-100	-0.0	+3,600	+1.5

Source: Bureau of Labor Statistics, Current Employment Statistics. Note: Current month's estimates are preliminary. All data are subject to revision. MoM = Month-over-Month. YoY = Year-over-Year. Δ (#) = Absolute Change. Δ (%) = Percent Change.

**Table 6. Average Weekly Earnings by Metropolitan Statistical Area, Total Private, Not Seasonally Adjusted**

Area	February 2026	MoM $\Delta$ (#)	MoM $\Delta$ (%)	YoY $\Delta$ (#)	YoY $\Delta$ (%)
Charleston-North Charleston	\$1,250.02	+\$44.04	+3.7	+\$53.56	+4.5
Columbia	\$1,018.16	+\$13.64	+1.4	-\$24.96	-2.4
Florence	\$811.86	+\$9.11	+1.1	+\$78.02	+10.6
Greenville-Anderson-Mauldin	\$1,215.77	+\$16.58	+1.4	+\$62.15	+5.4
Hilton Head Island-Bluffton-Beaufort	\$905.51	+\$5.53	+0.6	+\$24.52	+2.8
Myrtle Beach-Conway-North Myrtle Beach	\$822.62	+\$11.58	+1.4	-\$24.04	-2.8
Spartanburg	\$1,081.95	-\$9.35	-0.9	+\$8.59	+0.8
Sumter	\$985.35	+\$18.14	+1.9	+\$56.70	+6.1

Source: Bureau of Labor Statistics, Current Employment Statistics. Note: Current month's estimates are preliminary. All data are subject to revision. MoM = Month-over-Month. YoY = Year-over-Year.  $\Delta$  (#) = Absolute Change.  $\Delta$  (%) = Percent Change.

**Table 7. Average Weekly Hours by Metropolitan Statistical Area, Total Private, Not Seasonally Adjusted**

Area	February 2026	MoM $\Delta$ (#)	MoM $\Delta$ (%)	YoY $\Delta$ (#)	YoY $\Delta$ (%)
Charleston-North Charleston	34.8	0.8	+2.4	0.8	+2.4
Columbia	33.1	0.1	+0.3	-0.9	-2.6
Florence	31.9	-0.3	-0.9	-0.3	-0.9
Greenville-Anderson-Mauldin	35.8	0.3	+0.8	1.0	+2.9
Hilton Head Island-Bluffton-Beaufort	31.0	0.2	+0.6	-1.2	-3.7
Myrtle Beach-Conway-North Myrtle Beach	30.4	0.8	+2.7	-0.5	-1.6
Spartanburg	34.7	-0.3	-0.9	-0.4	-1.1
Sumter	33.3	1.4	+4.4	1.2	+3.7

Source: Bureau of Labor Statistics, Current Employment Statistics. Note: Current month's estimates are preliminary. All data are subject to revision. MoM = Month-over-Month. YoY = Year-over-Year.  $\Delta$  (#) = Absolute Change.  $\Delta$  (%) = Percent Change.

**Table 8. Average Hourly Earnings by Metropolitan Statistical Area, Total Private, Not Seasonally Adjusted**

Area	February 2026	MoM $\Delta$ (#)	MoM $\Delta$ (%)	YoY $\Delta$ (#)	YoY $\Delta$ (%)
Charleston-North Charleston	\$35.92	+\$0.45	+1.3	+\$0.73	+2.1
Columbia	\$30.76	+\$0.32	+1.1	+\$0.08	+0.3
Florence	\$25.45	+\$0.52	+2.1	+\$2.66	+11.7
Greenville-Anderson-Mauldin	\$33.96	+\$0.18	+0.5	+\$0.81	+2.4
Hilton Head Island-Bluffton-Beaufort	\$29.21	-\$0.01	-0.0	+\$1.85	+6.8
Myrtle Beach-Conway-North Myrtle Beach	\$27.06	-\$0.34	-1.2	-\$0.34	-1.2
Spartanburg	\$31.18	\$0.00	0.0	+\$0.60	+2.0
Sumter	\$29.59	-\$0.73	-2.4	+\$0.66	+2.3

Source: Bureau of Labor Statistics, Current Employment Statistics. Note: Current month's estimates are preliminary. All data are subject to revision. MoM = Month-over-Month. YoY = Year-over-Year.  $\Delta$  (#) = Absolute Change.  $\Delta$  (%) = Percent Change.

**Table 9. Average Weekly Earnings by Industry, Statewide, Not Seasonally Adjusted**

Industry	February 2026	MoM $\Delta$ (#)	MoM $\Delta$ (%)	YoY $\Delta$ (#)	YoY $\Delta$ (%)
Total Private	\$1,151.58	+\$18.25	+1.6	+\$64.91	+6.0
Goods Producing	\$1,443.94	+\$10.73	+0.7	+\$79.72	+5.8
Construction	\$1,374.44	+\$37.96	+2.8	+\$54.08	+4.1
Manufacturing	\$1,464.10	+\$11.00	+0.8	+\$94.05	+6.9
Private Service Providing	\$1,077.05	+\$15.82	+1.5	+\$57.75	+5.7
Trade, Transportation, and Utilities	\$990.64	+\$9.62	+1.0	+\$51.25	+5.5
Financial Activities	\$1,426.62	+\$23.27	+1.7	+\$71.89	+5.3
Professional and Business Services	\$1,544.62	+\$38.53	+2.6	+\$108.22	+7.5
Private Education and Health Services	\$1,004.56	+\$0.16	+0.0	-\$21.71	-2.1
Leisure and Hospitality	\$502.40	+\$24.61	+5.2	+\$16.32	+3.4
Other Services	\$950.74	+\$11.88	+1.3	-\$12.56	-1.3

Source: Bureau of Labor Statistics, Current Employment Statistics. Note: Current month's estimates are preliminary. All data are subject to revision. MoM = Month-over-Month. YoY = Year-over-Year.  $\Delta$  (#) = Absolute Change.  $\Delta$  (%) = Percent Change.

**Table 10. Average Weekly Hours by Industry, Statewide, Not Seasonally Adjusted**

Industry	February 2026	MoM $\Delta$ (#)	MoM $\Delta$ (%)	YoY $\Delta$ (#)	YoY $\Delta$ (%)
Total Private	34.0	0.4	+1.2	0.2	+0.6
Goods Producing	39.8	-0.1	-0.3	0.2	+0.5
Construction	40.7	0.9	+2.3	1.9	+4.9
Manufacturing	39.4	-0.4	-1.0	-0.3	-0.8
Private Service Providing	32.5	0.4	+1.2	0.1	+0.3
Trade, Transportation, and Utilities	33.4	0.1	+0.3	0.1	+0.3
Financial Activities	35.4	-0.2	-0.6	-2.2	-5.9
Professional and Business Services	38.5	0.4	+1.0	0.7	+1.9
Private Education and Health Services	31.8	0.8	+2.6	0.3	+1.0
Leisure and Hospitality	24.4	0.7	+3.0	-0.1	-0.4
Other Services	30.6	-0.8	-2.5	-1.9	-5.8

Source: Bureau of Labor Statistics, Current Employment Statistics. Note: Current month's estimates are preliminary. All data are subject to revision. MoM = Month-over-Month. YoY = Year-over-Year.  $\Delta$  (#) = Absolute Change.  $\Delta$  (%) = Percent Change.

**Table 11. Average Hourly Earnings by Industry, Statewide, Not Seasonally Adjusted**

Industry	February 2026	MoM $\Delta$ (#)	MoM $\Delta$ (%)	YoY $\Delta$ (#)	YoY $\Delta$ (%)
Total Private	\$33.87	+\$0.14	+0.4	+\$1.72	+5.3
Goods Producing	\$36.28	+\$0.36	+1.0	+\$1.83	+5.3
Construction	\$33.77	+\$0.19	+0.6	-\$0.26	-0.8
Manufacturing	\$37.16	+\$0.65	+1.8	+\$2.65	+7.7
Private Service Providing	\$33.14	+\$0.08	+0.2	+\$1.68	+5.3
Trade, Transportation, and Utilities	\$29.66	+\$0.20	+0.7	+\$1.45	+5.1
Financial Activities	\$40.30	+\$0.88	+2.2	+\$4.27	+11.9
Professional and Business Services	\$40.12	+\$0.59	+1.5	+\$2.12	+5.6
Private Education and Health Services	\$31.59	-\$0.81	-2.5	-\$0.99	-3.0
Leisure and Hospitality	\$20.59	+\$0.43	+2.1	+\$0.75	+3.8
Other Services	\$31.07	+\$1.17	+3.9	+\$1.43	+4.8

Source: Bureau of Labor Statistics, Current Employment Statistics. Note: Current month's estimates are preliminary. All data are subject to revision. YoY = Year-over-Year.  $\Delta$  (#) = Absolute Change.  $\Delta$  (%) = Percent Change.

**Table 12. Charleston-North Charleston MSA: Nonfarm Payroll by Economic Sector, NSA**

Sector	February 2026	MoM Δ (#)	MoM Δ (%)	YoY Δ (#)	YoY Δ (%)
Total Nonfarm	425,300	+200	+0.0	-3,700	-0.9
Total Private	352,500	-100	-0.0	-4,300	-1.2
Goods Producing	60,500	+500	+0.8	+1,500	+2.5
Service-Providing	364,800	-300	-0.1	-5,200	-1.4
Private Service Providing	292,000	-600	-0.2	-5,800	-1.9
Mining, Logging, and Construction	26,500	+200	+0.8	+2,000	+8.2
Manufacturing	34,000	+300	+0.9	-500	-1.4
Trade, Transportation, and Utilities	76,100	-400	-0.5	-1,400	-1.8
Wholesale Trade	13,600	+100	+0.7	+100	+0.7
Retail Trade	44,400	0	0.0	-600	-1.3
General Merchandise Stores	8,500	-100	-1.2	-100	-1.2
Transportation, Warehousing, and Utilities	18,100	-500	-2.7	-900	-4.7
Information	7,800	-200	-2.5	-300	-3.7
Financial Activities	22,000	+100	+0.5	+400	+1.9
Professional and Business Services	66,600	+700	+1.1	-2,800	-4.0
Administrative and Support and Waste Management	26,300	+500	+1.9	-1,800	-6.4
Private Education and Health Services	51,100	-300	-0.6	+300	+0.6
Leisure and Hospitality	51,600	-600	-1.1	-2,400	-4.4
Accommodation and Food Services	45,000	-700	-1.5	-2,100	-4.5
Food Services and Drinking Places	37,000	-700	-1.9	-1,600	-4.1
Other Services	16,800	+100	+0.6	+400	+2.4
Government	72,800	+300	+0.4	+600	+0.8
Federal Government	11,500	0	0.0	-800	-6.5
State Government	29,900	+100	+0.3	+1,800	+6.4
Local Government	31,400	+200	+0.6	-400	-1.3

Source: Bureau of Labor Statistics, Current Employment Statistics. Note: Current month's estimates are preliminary. All data are subject to revision. MSA = Metropolitan Statistical Area. NSA = Not Seasonally Adjusted. YoY = Year-over-Year. Δ (#) = Absolute Change. Δ (%) = Percent Change.

**Table 13. Columbia MSA: Nonfarm Payroll by Economic Sector, NSA**

<b>Sector</b>	<b>February 2026</b>	<b>MoM Δ (#)</b>	<b>MoM Δ (%)</b>	<b>YoY Δ (#)</b>	<b>YoY Δ (%)</b>
Total Nonfarm	432,700	+1,600	+0.4	-700	-0.2
Total Private	344,900	+300	+0.1	-1,400	-0.4
Goods Producing	51,400	0	0.0	+400	+0.8
Service-Providing	381,300	+1,600	+0.4	-1,100	-0.3
Private Service Providing	293,500	+300	+0.1	-1,800	-0.6
Mining, Logging, and Construction	19,600	0	0.0	+900	+4.8
Manufacturing	31,800	0	0.0	-500	-1.5
Trade, Transportation, and Utilities	77,700	-300	-0.4	-200	-0.3
Wholesale Trade	15,400	+100	+0.7	-300	-1.9
Retail Trade	44,500	+100	+0.2	-500	-1.1
Transportation, Warehousing, and Utilities	17,800	-500	-2.7	+600	+3.5
Information	4,300	0	0.0	-100	-2.3
Financial Activities	34,700	+100	+0.3	-500	-1.4
Credit Intermediation and Related Activities including Monetary Authorities - Central Bank	6,000	0	0.0	0	0.0
Professional and Business Services	54,200	+200	+0.4	-2,200	-3.9
Administrative and Support and Waste Management	27,900	+200	+0.7	-1,100	-3.8
Private Education and Health Services	65,700	+200	+0.3	+2,100	+3.3
Leisure and Hospitality	38,800	0	0.0	-1,400	-3.5
Food Services and Drinking Places	33,500	-100	-0.3	-500	-1.5
Other Services	18,100	+100	+0.6	+500	+2.8
Government	87,800	+1,300	+1.5	+700	+0.8
Federal Government	11,300	+100	+0.9	-1,000	-8.1
State Government	38,900	+1,100	+2.9	+900	+2.4
Local Government	37,600	+100	+0.3	+800	+2.2

Source: Bureau of Labor Statistics, Current Employment Statistics. Note: Current month's estimates are preliminary. All data are subject to revision. MSA = Metropolitan Statistical Area. NSA = Not Seasonally Adjusted. YoY = Year-over-Year. Δ (#) = Absolute Change. Δ (%) = Percent Change.

**Table 14. Greenville-Anderson-Mauldin MSA: Nonfarm Payroll by Economic Sector, NSA**

Sector	February 2026	MoM Δ (#)	MoM Δ (%)	YoY Δ (#)	YoY Δ (%)
Total Nonfarm	479,800	+1,300	+0.3	+3,000	+0.6
Total Private	414,000	+1,100	+0.3	+2,400	+0.6
Goods Producing	85,900	+500	+0.6	+100	+0.1
Service-Providing	393,900	+800	+0.2	+2,900	+0.7
Private Service Providing	328,100	+600	+0.2	+2,300	+0.7
Mining, Logging, and Construction	25,200	-200	-0.8	+300	+1.2
Manufacturing	60,700	+700	+1.2	-200	-0.3
Trade, Transportation, and Utilities	83,700	-600	-0.7	-100	-0.1
Wholesale Trade	21,200	+100	+0.5	+100	+0.5
Retail Trade	49,200	-100	-0.2	+100	+0.2
Transportation, Warehousing, and Utilities	13,300	-600	-4.3	-300	-2.2
Information	5,400	-100	-1.8	-300	-5.3
Financial Activities	23,000	0	0.0	+200	+0.9
Professional and Business Services	76,900	+700	+0.9	-1,100	-1.4
Professional, Scientific, and Technical Services	33,600	+200	+0.6	-300	-0.9
Management of Companies and Enterprises	6,800	0	0.0	+100	+1.5
Administrative and Support and Waste Management	36,500	+500	+1.4	-900	-2.4
Private Education and Health Services	70,400	+500	+0.7	+1,900	+2.8
Educational Services	16,200	+600	+3.8	+100	+0.6
Health Care and Social Assistance	54,200	-100	-0.2	+1,800	+3.4
Leisure and Hospitality	51,200	0	0.0	+1,200	+2.4
Other Services	17,500	+100	+0.6	+500	+2.9
Government	65,800	+200	+0.3	+600	+0.9
Federal Government	2,900	0	0.0	-200	-6.5
State Government	15,800	+600	+3.9	-200	-1.2
Local Government	47,100	-400	-0.8	+1,000	+2.2

Source: Bureau of Labor Statistics, Current Employment Statistics. Note: Current month's estimates are preliminary. All data are subject to revision. MSA = Metropolitan Statistical Area. NSA = Not Seasonally Adjusted. YoY = Year-over-Year. Δ (#) = Absolute Change. Δ (%) = Percent Change.

**Table 15. Myrtle Beach-Conway-North Myrtle Beach MSA: Nonfarm Payroll by Economic Sector, NSA**

<b>Sector</b>	<b>February 2026</b>	<b>MoM Δ (#)</b>	<b>MoM Δ (%)</b>	<b>YoY Δ (#)</b>	<b>YoY Δ (%)</b>
Total Nonfarm	153,000	+1,300	+0.9	+2,600	+1.7
Total Private	130,400	+1,100	+0.9	+1,700	+1.3
Goods Producing	13,900	0	0.0	+400	+3.0
Service-Providing	139,100	+1,300	+0.9	+2,200	+1.6
Private Service Providing	116,500	+1,100	+1.0	+1,300	+1.1
Mining, Logging, and Construction	10,400	0	0.0	+300	+3.0
Manufacturing	3,500	0	0.0	+100	+2.9
Trade, Transportation, and Utilities	32,600	-300	-0.9	+300	+0.9
Wholesale Trade	3,400	0	0.0	-100	-2.9
Retail Trade	26,200	-100	-0.4	+500	+1.9
Transportation, Warehousing, and Utilities	3,000	-200	-6.3	-100	-3.2
Information	1,800	-100	-5.3	-100	-5.3
Financial Activities	8,700	0	0.0	+400	+4.8
Professional and Business Services	15,600	+200	+1.3	-500	-3.1
Private Education and Health Services	18,500	+200	+1.1	+500	+2.8
Leisure and Hospitality	33,300	+1,000	+3.1	+400	+1.2
Accommodation and Food Services	28,700	+1,000	+3.6	+800	+2.9
Food Services and Drinking Places	22,200	+500	+2.3	+300	+1.4
Other Services	6,000	+100	+1.7	+300	+5.3
Government	22,600	+200	+0.9	+900	+4.1
Federal Government	1,100	0	0.0	0	0.0
State Government	4,800	+200	+4.3	+100	+2.1
Local Government	16,700	0	0.0	+800	+5.0

Source: Bureau of Labor Statistics, Current Employment Statistics. Note: Current month's estimates are preliminary. All data are subject to revision. MSA = Metropolitan Statistical Area. NSA = Not Seasonally Adjusted. YoY = Year-over-Year. Δ (#) = Absolute Change. Δ (%) = Percent Change.

**Table 16. Spartanburg MSA: Nonfarm Payroll by Economic Sector, NSA**

Sector	February 2026	MoM Δ (#)	MoM Δ (%)	YoY Δ (#)	YoY Δ (%)
Total Nonfarm	177,700	+400	+0.2	-400	-0.2
Total Private	147,500	+200	+0.1	-500	-0.3
Goods Producing	49,400	+300	+0.6	+600	+1.2
Service-Providing	128,300	+100	+0.1	-1,000	-0.8
Private Service Providing	98,100	-100	-0.1	-1,100	-1.1
Mining, Logging, and Construction	8,300	-100	-1.2	+200	+2.5
Manufacturing	41,100	+400	+1.0	+400	+1.0
Durable Goods	29,600	+300	+1.0	+1,000	+3.5
Non-Durable Goods	11,500	+100	+0.9	-600	-5.0
Trade, Transportation, and Utilities	36,900	-300	-0.8	-400	-1.1
Wholesale Trade	8,600	+100	+1.2	+500	+6.2
Retail Trade	19,200	-100	-0.5	+300	+1.6
Transportation, Warehousing, and Utilities	9,100	-300	-3.2	-1,200	-11.7
Information	900	0	0.0	0	0.0
Financial Activities	5,700	0	0.0	-100	-1.7
Professional and Business Services	16,300	0	0.0	-400	-2.4
Private Education and Health Services	17,700	+200	+1.1	+100	+0.6
Leisure and Hospitality	14,500	-100	-0.7	-500	-3.3
Other Services	6,100	+100	+1.7	+200	+3.4
Government	30,200	+200	+0.7	+100	+0.3
Federal Government	700	0	0.0	0	0.0
State Government	4,200	+100	+2.4	-100	-2.3
Local Government	25,300	+100	+0.4	+200	+0.8

Source: Bureau of Labor Statistics, Current Employment Statistics. Note: Current month's estimates are preliminary. All data are subject to revision. MSA = Metropolitan Statistical Area. NSA = Not Seasonally Adjusted. YoY = Year-over-Year. Δ (#) = Absolute Change. Δ (%) = Percent Change.

**Table 17. Florence MSA: Nonfarm Payroll by Economic Sector, NSA**

<b>Sector</b>	<b>February 2026</b>	<b>MoM <math>\Delta</math> (#)</b>	<b>MoM <math>\Delta</math> (%)</b>	<b>YoY <math>\Delta</math> (#)</b>	<b>YoY <math>\Delta</math> (%)</b>
Total Nonfarm	95,400	0	0.0	-700	-0.7
Total Private	75,900	-100	-0.1	-800	-1.0
Goods Producing	14,900	-100	-0.7	-300	-2.0
Service-Providing	80,500	+100	+0.1	-400	-0.5
Private Service Providing	61,000	0	0.0	-500	-0.8
Trade, Transportation, and Utilities	19,400	-300	-1.5	-700	-3.5
Government	19,500	+100	+0.5	+100	+0.5
Federal Government	700	0	0.0	0	0.0
State Government	5,500	+100	+1.9	+200	+3.8
Local Government	13,300	0	0.0	-100	-0.7

Source: Bureau of Labor Statistics, Current Employment Statistics. Note: Current month's estimates are preliminary. All data are subject to revision. MSA = Metropolitan Statistical Area. NSA = Not Seasonally Adjusted. YoY = Year-over-Year.  $\Delta$  (#) = Absolute Change.  $\Delta$  (%) = Percent Change.

**Table 18. Hilton Head Island-Bluffton-Beaufort MSA: Nonfarm Payroll by Economic Sector, NSA**

<b>Sector</b>	<b>February 2026</b>	<b>MoM Δ (#)</b>	<b>MoM Δ (%)</b>	<b>YoY Δ (#)</b>	<b>YoY Δ (%)</b>
Total Nonfarm	88,300	+200	+0.2	+1,600	+1.8
Total Private	75,200	-100	-0.1	+1,400	+1.9
Goods Producing	8,300	-100	-1.2	+400	+5.1
Service-Providing	80,000	+300	+0.4	+1,200	+1.5
Private Service Providing	66,900	0	0.0	+1,000	+1.5
Government	13,100	+300	+2.3	+200	+1.6

Source: Bureau of Labor Statistics, Current Employment Statistics. Note: Current month's estimates are preliminary. All data are subject to revision. MSA = Metropolitan Statistical Area. NSA = Not Seasonally Adjusted. YoY = Year-over-Year. Δ (#) = Absolute Change. Δ (%) = Percent Change.

**Table 19. Sumter MSA: Nonfarm Payroll by Economic Sector, NSA**

<b>Sector</b>	<b>February 2026</b>	<b>MoM <math>\Delta</math> (#)</b>	<b>MoM <math>\Delta</math> (%)</b>	<b>YoY <math>\Delta</math> (#)</b>	<b>YoY <math>\Delta</math> (%)</b>
Total Nonfarm	37,500	-100	-0.3	-400	-1.1
Total Private	31,400	-200	-0.6	-300	-0.9
Goods Producing	8,800	-100	-1.1	+100	+1.1
Service-Providing	28,700	0	0.0	-500	-1.7
Private Service Providing	22,600	-100	-0.4	-400	-1.7
Manufacturing	6,200	+100	+1.6	+200	+3.3
Government	6,100	+100	+1.7	-100	-1.6
Federal Government	1,200	0	0.0	-200	-14.3
State Government	1,400	+100	+7.7	0	0.0
Local Government	3,500	0	0.0	+100	+2.9

Source: Bureau of Labor Statistics, Current Employment Statistics. Note: Current month's estimates are preliminary. All data are subject to revision. MSA = Metropolitan Statistical Area. NSA = Not Seasonally Adjusted. YoY = Year-over-Year.  $\Delta$  (#) = Absolute Change.  $\Delta$  (%) = Percent Change.

For more information on South Carolina's LMI division and our funding sources, visit:

<https://lmi.sc.gov/About-Us/>.