

# South Carolina Data Trends: January 2026

The South Carolina Department of Employment and Workforce, through its Labor Market Information (LMI) Division, summarizes the latest workforce data trends as of January 2026, providing key insights into employment and wages for the state and each of its metro areas. For questions or additional information, please contact the LMI Division at [lmicustomerservice@dew.sc.gov](mailto:lmicustomerservice@dew.sc.gov).

**Table 1. Labor Market Snapshot**

Metric	January 2026	MoM Δ (#)	YoY Δ (#)
Unemployment	130,280	+4,563	+23,378
Employment	2,516,227	+7,402	+39,281
Labor Force	2,646,507	+11,965	+62,659

Source: Bureau of Labor Statistics, Local Area Unemployment Statistics. Note: Current month's estimates are preliminary. All data are subject to revision. Estimates are seasonally adjusted. MoM = Month-over-Month. YoY = Year-over-Year. Δ (#) = Absolute Change.

**Table 2. Nonagricultural Employment by Industry, Seasonally Adjusted**

Industry	January 2026	MoM $\Delta$ (#)	MoM $\Delta$ (%)	YoY $\Delta$ (#)	YoY $\Delta$ (%)
Total Nonfarm	2,405,500	+5,400	+0.2	+31,500	+1.3
Construction	126,100	+900	+0.7	+5,000	+4.1
Manufacturing	261,800	-100	-0.0	-700	-0.3
Trade, Transportation, and Utilities	446,300	+1,700	+0.4	+2,400	+0.5
Information	27,100	-500	-1.8	-600	-2.2
Financial Activities	123,700	+100	+0.1	+1,400	+1.1
Professional and Business Services	311,800	-700	-0.2	-4,300	-1.4
Private Education and Health Services	321,700	+1,400	+0.4	+11,800	+3.8
Leisure and Hospitality	288,800	+600	+0.2	+6,800	+2.4
Other Services	92,600	0	0.0	+2,300	+2.5
Government	400,800	+2,000	+0.5	+7,300	+1.9

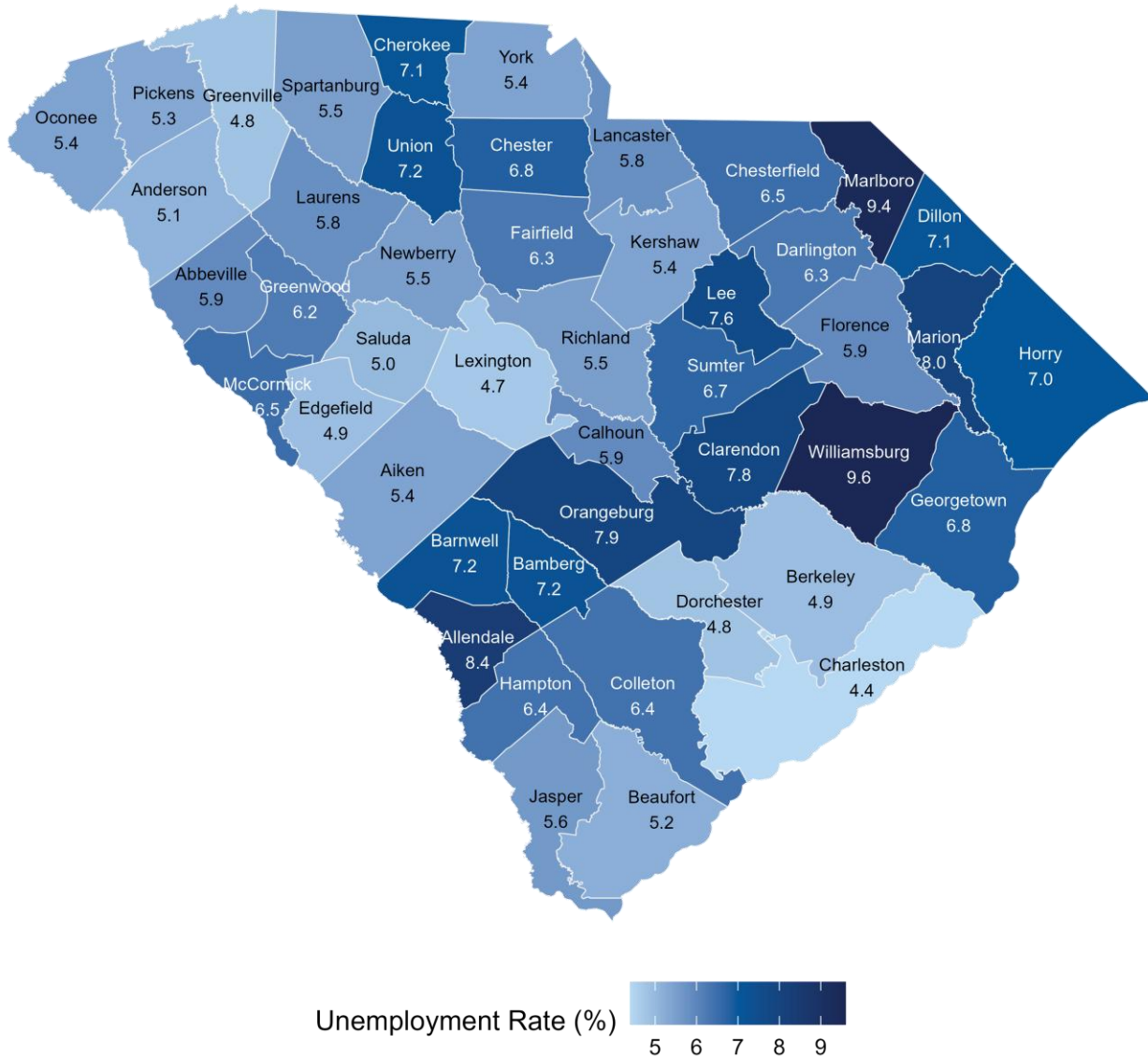
Source: Bureau of Labor Statistics, Current Employment Statistics. Note: Current month's estimates are preliminary. All data are subject to revision. MoM = Month-over-Month. YoY = Year-over-Year.  $\Delta$  (#) = Absolute Change.  $\Delta$  (%) = Percent Change.

**Table 3. Nonagricultural Employment by Metropolitan Statistical Area, Seasonally Adjusted**

Area	January 2026	MoM $\Delta$ (#)	MoM $\Delta$ (%)	YoY $\Delta$ (#)	YoY $\Delta$ (%)
Statewide	2,405,500	+5,400	+0.2	+31,500	+1.3
Charleston/North Charleston	433,000	+800	+0.2	+2,300	+0.5
Columbia	436,700	-100	-0.0	+3,100	+0.7
Florence	96,400	-100	-0.1	+300	+0.3
Greenville/Anderson/Mauldin	485,000	+2,500	+0.5	+8,600	+1.8
Hilton Head Island-Bluffton-Beaufort	90,000	0	0.0	+1,800	+2.0
Myrtle Beach	159,000	+100	+0.1	+3,100	+2.0
Spartanburg	178,600	+500	+0.3	+1,700	+1.0
Sumter	37,900	-100	-0.3	+100	+0.3

Source: Bureau of Labor Statistics, Current Employment Statistics. Note: Current month's estimates are preliminary. All data are subject to revision. MoM = Month-over-Month. YoY = Year-over-Year.  $\Delta$  (#) = Absolute Change.  $\Delta$  (%) = Percent Change.

Figure 1. Unemployment Rate by County, Not Seasonally Adjusted



Source: Bureau of Labor Statistics, Local Area Unemployment Statistics.

**Table 4. Unemployment Estimates by County, Not Seasonally Adjusted**

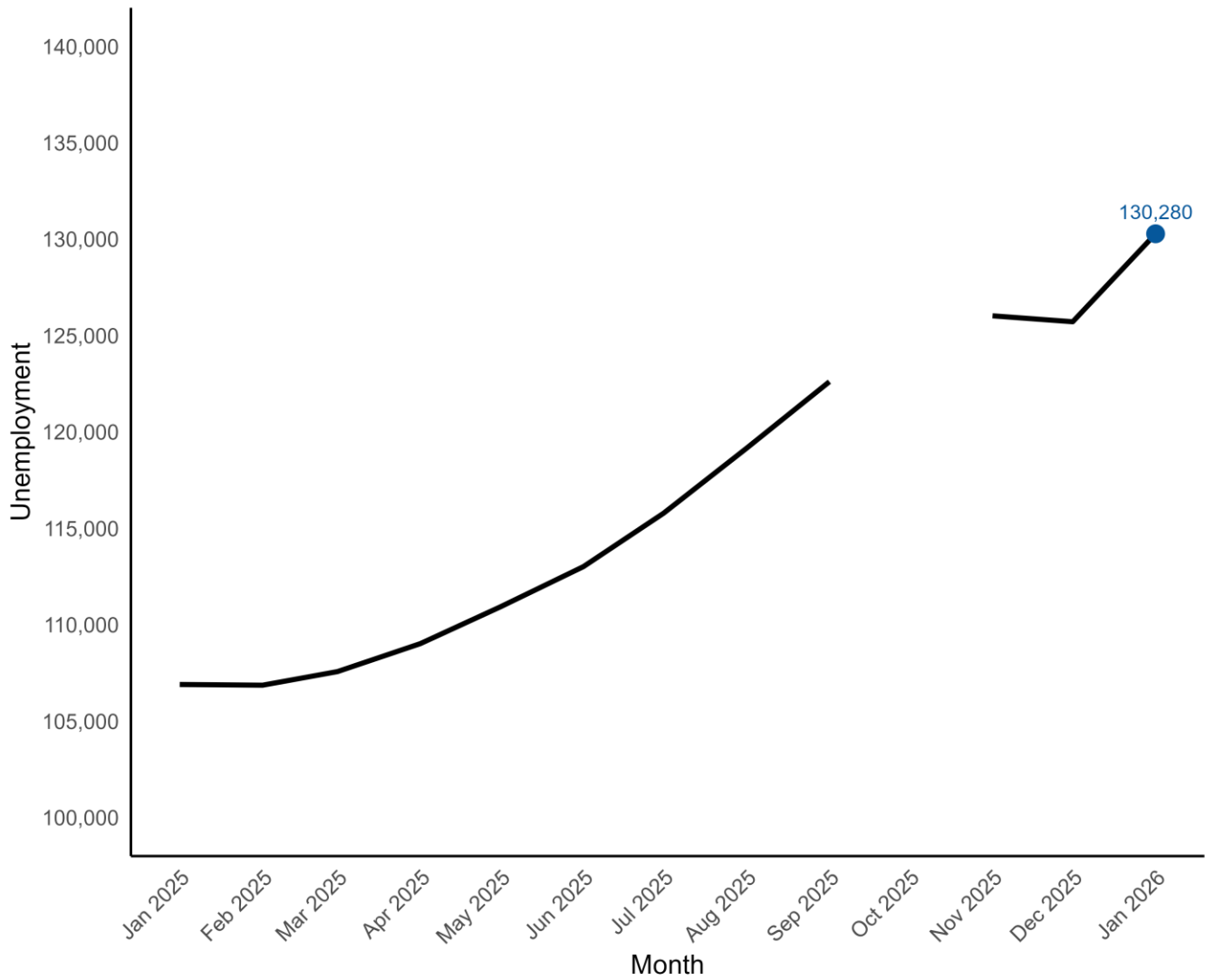
<b>County</b>	<b>Labor Force</b>	<b>Employment</b>	<b>Unemp. Level</b>	<b>Unemp. Rate</b>
Abbeville	10,661	10,034	627	5.9
Aiken	81,128	76,742	4,386	5.4
Allendale	2,722	2,493	229	8.4
Anderson	105,509	100,090	5,419	5.1
Bamberg	5,505	5,111	394	7.2
Barnwell	8,285	7,691	594	7.2
Beaufort	86,921	82,369	4,552	5.2
Berkeley	135,238	128,671	6,567	4.9
Calhoun	6,730	6,336	394	5.9
Charleston	240,265	229,637	10,628	4.4
Cherokee	24,160	22,448	1,712	7.1
Chester	14,519	13,532	987	6.8
Chesterfield	18,726	17,505	1,221	6.5
Clarendon	11,791	10,869	922	7.8
Colleton	15,941	14,918	1,023	6.4
Darlington	29,113	27,269	1,844	6.3
Dillon	12,272	11,404	868	7.1
Dorchester	90,188	85,863	4,325	4.8
Edgefield	12,889	12,259	630	4.9
Fairfield	10,108	9,474	634	6.3
Florence	66,524	62,587	3,937	5.9
Georgetown	28,059	26,147	1,912	6.8
Greenville	301,821	287,382	14,439	4.8
Greenwood	30,350	28,466	1,884	6.2
Hampton	7,918	7,409	509	6.4
Horry	177,987	165,491	12,496	7.0
Jasper	15,107	14,254	853	5.6

**Table 4. Unemployment Estimates by County, Not Seasonally Adjusted**

<b>County</b>	<b>Labor Force</b>	<b>Employment</b>	<b>Unemp. Level</b>	<b>Unemp. Rate</b>
Kershaw	33,897	32,070	1,827	5.4
Lancaster	52,004	48,993	3,011	5.8
Laurens	32,955	31,041	1,914	5.8
Lee	6,053	5,592	461	7.6
Lexington	161,834	154,157	7,677	4.7
McCormick	3,518	3,289	229	6.5
Marion	12,264	11,281	983	8.0
Marlboro	8,617	7,806	811	9.4
Newberry	19,186	18,140	1,046	5.5
Oconee	38,230	36,169	2,061	5.4
Orangeburg	35,865	33,046	2,819	7.9
Pickens	68,616	64,973	3,643	5.3
Richland	217,270	205,242	12,028	5.5
Saluda	9,005	8,552	453	5.0
Spartanburg	175,366	165,666	9,700	5.5
Sumter	43,219	40,337	2,882	6.7
Union	11,047	10,247	800	7.2
Williamsburg	10,835	9,799	1,036	9.6
York	159,137	150,526	8,611	5.4

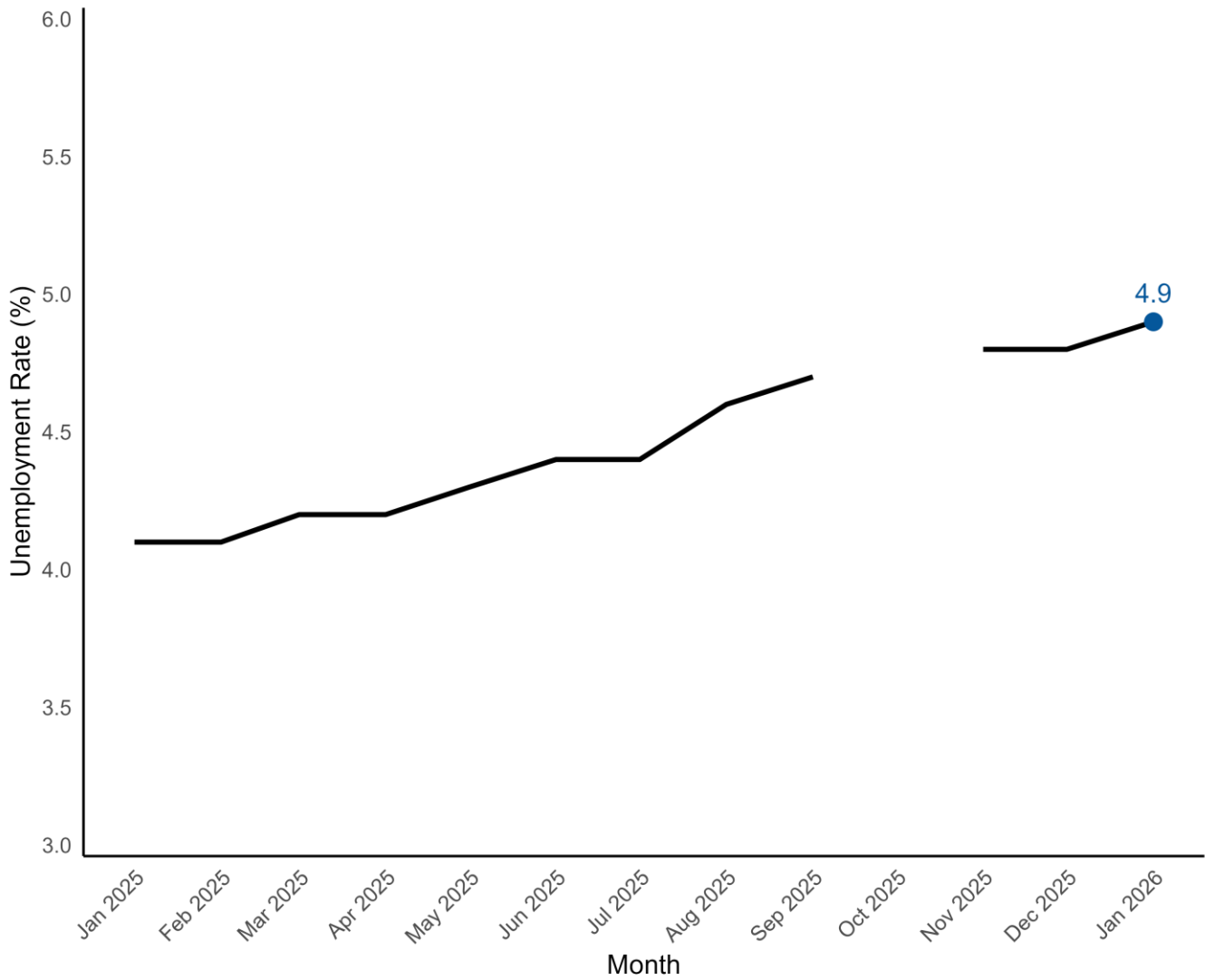
Source: Bureau of Labor Statistics, Local Area Unemployment Statistics. Note: Current month's estimates are preliminary. All data are subject to revision. Unemp = Unemployment.

**Figure 2. Monthly Unemployment, Past 12 Months, Seasonally Adjusted**



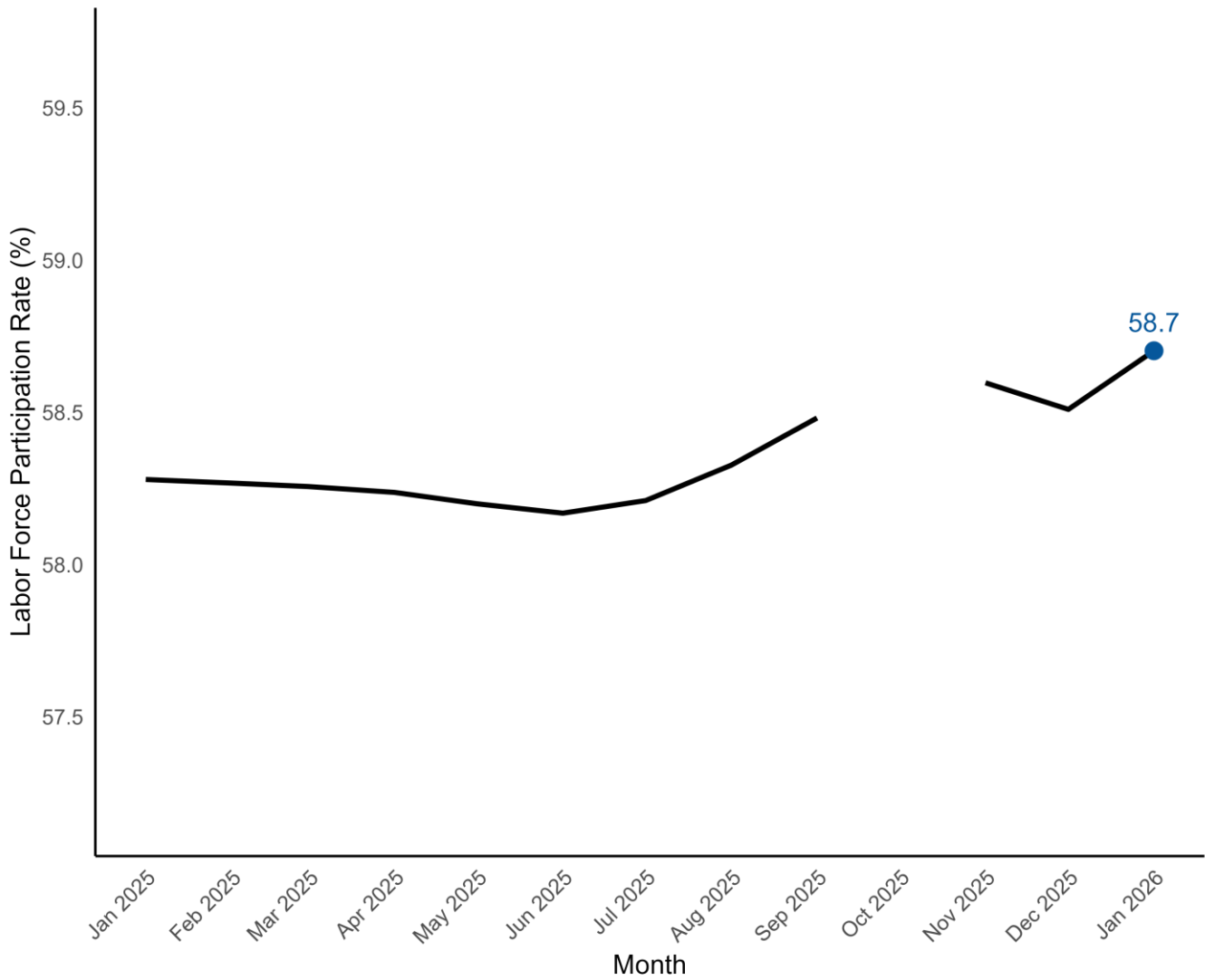
Source: Bureau of Labor Statistics, Local Area Unemployment Statistics.  
**Data for October 2025 are unavailable due to the federal government shutdown during that period.**

Figure 3. Monthly Unemployment Rate, Past 12 months, Seasonally Adjusted



Source: Bureau of Labor Statistics, Local Area Unemployment Statistics.  
Data for October 2025 are unavailable due to the federal government shutdown during that period.

**Figure 4. Labor Force Participation, Past 12 Months, Seasonally Adjusted**



Source: Bureau of Labor Statistics, Local Area Unemployment Statistics.  
Data for October 2025 are unavailable due to the federal government shutdown during that period.

**Table 5. NonFarm Payroll by Economic Sector, Seasonally Adjusted**

<b>Sector</b>	<b>January 2026</b>	<b>MoM Δ (#)</b>	<b>MoM Δ (%)</b>	<b>YoY Δ (#)</b>	<b>YoY Δ (%)</b>
Total Nonfarm	2,405,500	+5,400	+0.2	+31,500	+1.3
Total Private	2,004,700	+3,400	+0.2	+24,200	+1.2
Goods Producing	392,700	+800	+0.2	+4,400	+1.1
Service-Providing	2,012,800	+4,600	+0.2	+27,100	+1.4
Private Service Providing	1,612,000	+2,600	+0.2	+19,800	+1.2
Mining and Logging	4,800	0	0.0	+100	+2.1
Mining, Logging, and Construction	130,900	+900	+0.7	+5,100	+4.1
Construction	126,100	+900	+0.7	+5,000	+4.1
Manufacturing	261,800	-100	-0.0	-700	-0.3
Durable Goods	164,500	+500	+0.3	+2,900	+1.8
Non-Durable Goods	97,300	-600	-0.6	-3,600	-3.6
Trade, Transportation, and Utilities	446,300	+1,700	+0.4	+2,400	+0.5
Wholesale Trade	84,200	+100	+0.1	+200	+0.2
Retail Trade	270,400	+1,200	+0.4	+2,200	+0.8
Transportation, Warehousing, and Utilities	91,700	+400	+0.4	0	0.0
Information	27,100	-500	-1.8	-600	-2.2
Financial Activities	123,700	+100	+0.1	+1,400	+1.1
Finance and Insurance	87,300	+400	+0.5	+900	+1.0
Real Estate and Rental and Leasing	36,400	-300	-0.8	+500	+1.4
Professional and Business Services	311,800	-700	-0.2	-4,300	-1.4
Professional, Scientific, and Technical	136,100	+300	+0.2	-500	-0.4
Management of Companies and Enterprises	25,000	-200	-0.8	+1,400	+5.9
Administrative and Support and Waste Management and Remediation Services	150,700	-800	-0.5	-5,200	-3.3
Private Education and Health Services	321,700	+1,400	+0.4	+11,800	+3.8
Private Educational Services	54,200	+400	+0.7	+1,900	+3.6
Health Care and Social Assistance	267,500	+1,000	+0.4	+9,900	+3.8

**Table 5. NonFarm Payroll by Economic Sector, Seasonally Adjusted**

<b>Sector</b>	<b>January 2026</b>	<b>MoM Δ (#)</b>	<b>MoM Δ (%)</b>	<b>YoY Δ (#)</b>	<b>YoY Δ (%)</b>
Leisure and Hospitality	288,800	+600	+0.2	+6,800	+2.4
Arts, Entertainment, and Recreation	36,800	-500	-1.3	-600	-1.6
Accommodation and Food Services	252,000	+1,100	+0.4	+7,400	+3.0
Other Services	92,600	0	0.0	+2,300	+2.5
Government	400,800	+2,000	+0.5	+7,300	+1.9
Federal Government	35,400	-100	-0.3	-3,200	-8.3
State Government	123,800	+1,400	+1.1	+6,300	+5.4
Local Government	241,600	+700	+0.3	+4,200	+1.8

Source: Bureau of Labor Statistics, Current Employment Statistics. Note: Current month's estimates are preliminary. All data are subject to revision. MoM = Month-over-Month. YoY = Year-over-Year. Δ (#) = Absolute Change. Δ (%) = Percent Change.

**Table 6. Average Weekly Earnings by Metropolitan Statistical Area, Total Private, Not Seasonally Adjusted**

Area	January 2026	MoM $\Delta$ (#)	MoM $\Delta$ (%)	YoY $\Delta$ (#)	YoY $\Delta$ (%)
Charleston-North Charleston	\$1,208.36	+\$15.06	+1.3	+\$67.69	+5.9
Columbia	\$1,004.52	-\$6.14	-0.6	-\$8.50	-0.8
Florence	\$802.75	+\$35.10	+4.6	+\$74.47	+10.2
Greenville-Anderson-Mauldin	\$1,199.00	+\$1.64	+0.1	+\$84.12	+7.5
Hilton Head Island-Bluffton-Beaufort	\$897.92	+\$4.66	+0.5	+\$49.41	+5.8
Myrtle Beach-Conway-North Myrtle Beach	\$811.04	+\$1.94	+0.2	-\$27.46	-3.3
Spartanburg	\$1,092.70	+\$8.04	+0.7	+\$29.42	+2.8
Sumter	\$967.21	-\$37.09	-3.7	+\$15.62	+1.6

Source: Bureau of Labor Statistics, Current Employment Statistics. Note: Current month's estimates are preliminary. All data are subject to revision. MoM = Month-over-Month. YoY = Year-over-Year.  $\Delta$  (#) = Absolute Change.  $\Delta$  (%) = Percent Change.

**Table 7. Average Weekly Hours by Metropolitan Statistical Area, Total Private, Not Seasonally Adjusted**

Area	January 2026	MoM $\Delta$ (#)	MoM $\Delta$ (%)	YoY $\Delta$ (#)	YoY $\Delta$ (%)
Charleston-North Charleston	34.0	-0.3	-0.9	1.4	+4.3
Columbia	33.0	-0.3	-0.9	-0.7	-2.1
Florence	32.2	-0.3	-0.9	0.3	+0.9
Greenville-Anderson-Mauldin	35.4	-0.6	-1.7	2.1	+6.3
Hilton Head Island-Bluffton-Beaufort	30.5	-0.7	-2.2	-0.4	-1.3
Myrtle Beach-Conway-North Myrtle Beach	29.6	-0.4	-1.3	-0.4	-1.3
Spartanburg	35.0	-0.4	-1.1	0.8	+2.3
Sumter	31.9	-1.3	-3.9	-0.7	-2.1

Source: Bureau of Labor Statistics, Current Employment Statistics. Note: Current month's estimates are preliminary. All data are subject to revision. MoM = Month-over-Month. YoY = Year-over-Year.  $\Delta$  (#) = Absolute Change.  $\Delta$  (%) = Percent Change.

**Table 8. Average Hourly Earnings by Metropolitan Statistical Area, Total Private, Not Seasonally Adjusted**

Area	January 2026	MoM $\Delta$ (#)	MoM $\Delta$ (%)	YoY $\Delta$ (#)	YoY $\Delta$ (%)
Charleston-North Charleston	\$35.54	+\$0.75	+2.2	+\$0.55	+1.6
Columbia	\$30.44	+\$0.09	+0.3	+\$0.38	+1.3
Florence	\$24.93	+\$1.31	+5.5	+\$2.10	+9.2
Greenville-Anderson-Mauldin	\$33.87	+\$0.61	+1.8	+\$0.39	+1.2
Hilton Head Island-Bluffton-Beaufort	\$29.44	+\$0.81	+2.8	+\$1.98	+7.2
Myrtle Beach-Conway-North Myrtle Beach	\$27.40	+\$0.43	+1.6	-\$0.55	-2.0
Spartanburg	\$31.22	+\$0.58	+1.9	+\$0.13	+0.4
Sumter	\$30.32	+\$0.07	+0.2	+\$1.13	+3.9

Source: Bureau of Labor Statistics, Current Employment Statistics. Note: Current month's estimates are preliminary. All data are subject to revision. MoM = Month-over-Month. YoY = Year-over-Year.  $\Delta$  (#) = Absolute Change.  $\Delta$  (%) = Percent Change.

**Table 9. Average Weekly Earnings by Industry, Statewide, Not Seasonally Adjusted**

Industry	January 2026	MoM $\Delta$ (#)	MoM $\Delta$ (%)	YoY $\Delta$ (#)	YoY $\Delta$ (%)
Total Private	\$1,136.69	-\$1.23	-0.1	+\$85.38	+8.1
Goods Producing	\$1,434.80	-\$13.00	-0.9	+\$119.96	+9.1
Construction	\$1,338.08	+\$2.08	+0.2	+\$25.49	+1.9
Manufacturing	\$1,454.69	-\$14.17	-1.0	+\$124.15	+9.3
Private Service Providing	\$1,061.76	-\$0.34	-0.0	+\$76.75	+7.8
Trade, Transportation, and Utilities	\$980.35	-\$1.39	-0.1	+\$76.82	+8.5
Financial Activities	\$1,402.28	+\$41.82	+3.1	+\$63.71	+4.8
Professional and Business Services	\$1,507.08	+\$28.42	+1.9	+\$122.17	+8.8
Private Education and Health Services	\$1,002.71	+\$3.30	+0.3	-\$14.85	-1.5
Leisure and Hospitality	\$474.00	-\$15.95	-3.3	+\$27.72	+6.2
Other Services	\$939.80	+\$6.02	+0.6	+\$22.69	+2.5

Source: Bureau of Labor Statistics, Current Employment Statistics. Note: Current month's estimates are preliminary. All data are subject to revision. MoM = Month-over-Month. YoY = Year-over-Year.  $\Delta$  (#) = Absolute Change.  $\Delta$  (%) = Percent Change.

**Table 10. Average Weekly Hours by Industry, Statewide, Not Seasonally Adjusted**

Industry	January 2026	MoM $\Delta$ (#)	MoM $\Delta$ (%)	YoY $\Delta$ (#)	YoY $\Delta$ (%)
Total Private	33.6	-0.5	-1.5	0.9	+2.8
Goods Producing	39.9	-0.7	-1.7	1.7	+4.5
Construction	39.8	-0.2	-0.5	0.7	+1.8
Manufacturing	39.8	-0.9	-2.2	1.2	+3.1
Private Service Providing	32.0	-0.5	-1.5	0.7	+2.2
Trade, Transportation, and Utilities	33.3	-0.6	-1.8	1.1	+3.4
Financial Activities	35.6	0.3	+0.8	-1.5	-4.0
Professional and Business Services	38.0	-0.1	-0.3	1.0	+2.7
Private Education and Health Services	30.9	-0.4	-1.3	-0.4	-1.3
Leisure and Hospitality	23.5	-0.9	-3.7	0.8	+3.5
Other Services	31.4	-0.2	-0.6	0.5	+1.6

Source: Bureau of Labor Statistics, Current Employment Statistics. Note: Current month's estimates are preliminary. All data are subject to revision. MoM = Month-over-Month. YoY = Year-over-Year.  $\Delta$  (#) = Absolute Change.  $\Delta$  (%) = Percent Change.

**Table 11. Average Hourly Earnings by Industry, Statewide, Not Seasonally Adjusted**

Industry	January 2026	MoM $\Delta$ (#)	MoM $\Delta$ (%)	YoY $\Delta$ (#)	YoY $\Delta$ (%)
Total Private	\$33.83	+\$0.46	+1.4	+\$1.68	+5.2
Goods Producing	\$35.96	+\$0.30	+0.8	+\$1.54	+4.5
Construction	\$33.62	+\$0.22	+0.7	+\$0.05	+0.1
Manufacturing	\$36.55	+\$0.46	+1.3	+\$2.08	+6.0
Private Service Providing	\$33.18	+\$0.50	+1.5	+\$1.71	+5.4
Trade, Transportation, and Utilities	\$29.44	+\$0.48	+1.7	+\$1.38	+4.9
Financial Activities	\$39.39	+\$0.85	+2.2	+\$3.31	+9.2
Professional and Business Services	\$39.66	+\$0.85	+2.2	+\$2.23	+6.0
Private Education and Health Services	\$32.45	+\$0.52	+1.6	-\$0.06	-0.2
Leisure and Hospitality	\$20.17	+\$0.09	+0.4	+\$0.51	+2.6
Other Services	\$29.93	+\$0.38	+1.3	+\$0.25	+0.8

Source: Bureau of Labor Statistics, Current Employment Statistics. Note: Current month's estimates are preliminary. All data are subject to revision. YoY = Year-over-Year.  $\Delta$  (#) = Absolute Change.  $\Delta$  (%) = Percent Change.

**Table 12. Charleston-North Charleston MSA: Nonfarm Payroll by Economic Sector, NSA**

Sector	January 2026	MoM Δ (#)	MoM Δ (%)	YoY Δ (#)	YoY Δ (%)
Total Nonfarm	425,500	-7,200	-1.7	-800	-0.2
Total Private	353,000	-7,200	-2.0	-1,400	-0.4
Goods Producing	60,200	-200	-0.3	+1,400	+2.4
Service-Providing	365,300	-7,000	-1.9	-2,200	-0.6
Private Service Providing	292,800	-7,000	-2.3	-2,800	-0.9
Mining, Logging, and Construction	26,300	-100	-0.4	+2,100	+8.7
Manufacturing	33,900	-100	-0.3	-700	-2.0
Trade, Transportation, and Utilities	76,400	-2,600	-3.3	-900	-1.2
Wholesale Trade	13,500	-100	-0.7	0	0.0
Retail Trade	44,100	-1,900	-4.1	-900	-2.0
General Merchandise Stores	8,500	-500	-5.6	0	0.0
Transportation, Warehousing, and Utilities	18,800	-600	-3.1	0	0.0
Information	8,000	-300	-3.6	-100	-1.2
Financial Activities	21,900	-600	-2.7	+300	+1.4
Professional and Business Services	65,900	-1,300	-1.9	-2,600	-3.8
Administrative and Support and Waste Management	25,700	-500	-1.9	-1,800	-6.5
Private Education and Health Services	51,400	-200	-0.4	+1,000	+2.0
Leisure and Hospitality	52,500	-1,900	-3.5	-900	-1.7
Accommodation and Food Services	45,800	-1,700	-3.6	-800	-1.7
Food Services and Drinking Places	37,800	-1,600	-4.1	-500	-1.3
Other Services	16,700	-100	-0.6	+400	+2.5
Government	72,500	0	0.0	+600	+0.8
Federal Government	11,500	0	0.0	-900	-7.3
State Government	29,800	+100	+0.3	+1,900	+6.8
Local Government	31,200	-100	-0.3	-400	-1.3

Source: Bureau of Labor Statistics, Current Employment Statistics. Note: Current month's estimates are preliminary. All data are subject to revision. MSA = Metropolitan Statistical Area. NSA = Not Seasonally Adjusted. YoY = Year-over-Year. Δ (#) = Absolute Change. Δ (%) = Percent Change.

**Table 13. Columbia MSA: Nonfarm Payroll by Economic Sector, NSA**

Sector	January 2026	MoM Δ (#)	MoM Δ (%)	YoY Δ (#)	YoY Δ (%)
Total Nonfarm	431,600	-8,200	-1.9	+1,000	+0.2
Total Private	345,100	-6,900	-2.0	+800	+0.2
Goods Producing	51,600	+100	+0.2	+600	+1.2
Service-Providing	380,000	-8,300	-2.1	+400	+0.1
Private Service Providing	293,500	-7,000	-2.3	+200	+0.1
Mining, Logging, and Construction	19,600	+300	+1.6	+1,000	+5.4
Manufacturing	32,000	-200	-0.6	-400	-1.2
Trade, Transportation, and Utilities	77,700	-2,800	-3.5	-400	-0.5
Wholesale Trade	15,300	-100	-0.6	-300	-1.9
Retail Trade	44,100	-1,900	-4.1	-900	-2.0
Transportation, Warehousing, and Utilities	18,300	-800	-4.2	+800	+4.6
Information	4,300	-200	-4.4	-200	-4.4
Financial Activities	34,600	-800	-2.3	-500	-1.4
Credit Intermediation and Related Activities including Monetary Authorities - Central Bank	6,000	-100	-1.6	0	0.0
Professional and Business Services	54,100	-1,600	-2.9	-1,900	-3.4
Administrative and Support and Waste Management	27,600	-900	-3.2	-1,100	-3.8
Private Education and Health Services	65,700	-200	-0.3	+2,900	+4.6
Leisure and Hospitality	39,000	-1,400	-3.5	-300	-0.8
Food Services and Drinking Places	33,600	-900	-2.6	+300	+0.9
Other Services	18,100	0	0.0	+600	+3.4
Government	86,500	-1,300	-1.5	+200	+0.2
Federal Government	11,200	-200	-1.8	-1,100	-8.9
State Government	37,800	-900	-2.3	+500	+1.3
Local Government	37,500	-200	-0.5	+800	+2.2

Source: Bureau of Labor Statistics, Current Employment Statistics. Note: Current month's estimates are preliminary. All data are subject to revision. MSA = Metropolitan Statistical Area. NSA = Not Seasonally Adjusted. YoY = Year-over-Year. Δ (#) = Absolute Change. Δ (%) = Percent Change.

**Table 14. Greenville-Anderson-Mauldin MSA: Nonfarm Payroll by Economic Sector, NSA**

Sector	January 2026	MoM Δ (#)	MoM Δ (%)	YoY Δ (#)	YoY Δ (%)
Total Nonfarm	478,800	-6,400	-1.3	+6,200	+1.3
Total Private	413,200	-6,200	-1.5	+4,900	+1.2
Goods Producing	85,700	+300	+0.4	+500	+0.6
Service-Providing	393,100	-6,700	-1.7	+5,700	+1.5
Private Service Providing	327,500	-6,500	-1.9	+4,400	+1.4
Mining, Logging, and Construction	25,300	+100	+0.4	+600	+2.4
Manufacturing	60,400	+200	+0.3	-100	-0.2
Trade, Transportation, and Utilities	83,900	-2,500	-2.9	+100	+0.1
Wholesale Trade	21,100	-200	-0.9	+100	+0.5
Retail Trade	48,900	-1,900	-3.7	-200	-0.4
Transportation, Warehousing, and Utilities	13,900	-400	-2.8	+200	+1.5
Information	5,500	-300	-5.2	-200	-3.5
Financial Activities	22,900	-500	-2.1	0	0.0
Professional and Business Services	76,400	-1,800	-2.3	-1,100	-1.4
Professional, Scientific, and Technical Services	33,400	-400	-1.2	-200	-0.6
Management of Companies and Enterprises	6,900	-200	-2.8	+200	+3.0
Administrative and Support and Waste Management	36,100	-1,200	-3.2	-1,100	-3.0
Private Education and Health Services	69,900	-600	-0.9	+3,000	+4.5
Educational Services	15,600	-500	-3.1	+700	+4.7
Health Care and Social Assistance	54,300	-100	-0.2	+2,300	+4.4
Leisure and Hospitality	51,500	-600	-1.2	+2,100	+4.3
Other Services	17,400	-200	-1.1	+500	+3.0
Government	65,600	-200	-0.3	+1,300	+2.0
Federal Government	2,900	-100	-3.3	-200	-6.5
State Government	15,200	-400	-2.6	-100	-0.7
Local Government	47,500	+300	+0.6	+1,600	+3.5

Source: Bureau of Labor Statistics, Current Employment Statistics. Note: Current month's estimates are preliminary. All data are subject to revision. MSA = Metropolitan Statistical Area. NSA = Not Seasonally Adjusted. YoY = Year-over-Year. Δ (#) = Absolute Change. Δ (%) = Percent Change.

**Table 15. Myrtle Beach-Conway-North Myrtle Beach MSA: Nonfarm Payroll by Economic Sector, NSA**

<b>Sector</b>	<b>January 2026</b>	<b>MoM Δ (#)</b>	<b>MoM Δ (%)</b>	<b>YoY Δ (#)</b>	<b>YoY Δ (%)</b>
Total Nonfarm	151,600	-3,100	-2.0	+3,500	+2.4
Total Private	129,200	-2,900	-2.2	+2,600	+2.1
Goods Producing	13,900	+100	+0.7	+600	+4.5
Service-Providing	137,700	-3,200	-2.3	+2,900	+2.2
Private Service Providing	115,300	-3,000	-2.5	+2,000	+1.8
Mining, Logging, and Construction	10,400	+100	+1.0	+500	+5.1
Manufacturing	3,500	0	0.0	+100	+2.9
Trade, Transportation, and Utilities	32,700	-1,400	-4.1	+600	+1.9
Wholesale Trade	3,400	0	0.0	0	0.0
Retail Trade	26,100	-1,300	-4.7	+600	+2.4
Transportation, Warehousing, and Utilities	3,200	-100	-3.0	0	0.0
Information	1,800	-100	-5.3	-100	-5.3
Financial Activities	8,600	-200	-2.3	+300	+3.6
Professional and Business Services	15,300	-500	-3.2	-500	-3.2
Private Education and Health Services	18,300	-100	-0.5	+400	+2.2
Leisure and Hospitality	32,600	-700	-2.1	+900	+2.8
Accommodation and Food Services	27,800	-600	-2.1	+700	+2.6
Food Services and Drinking Places	21,800	-600	-2.7	+700	+3.3
Other Services	6,000	0	0.0	+400	+7.1
Government	22,400	-200	-0.9	+900	+4.2
Federal Government	1,100	0	0.0	0	0.0
State Government	4,600	-200	-4.2	+100	+2.2
Local Government	16,700	0	0.0	+800	+5.0

Source: Bureau of Labor Statistics, Current Employment Statistics. Note: Current month's estimates are preliminary. All data are subject to revision. MSA = Metropolitan Statistical Area. NSA = Not Seasonally Adjusted. YoY = Year-over-Year. Δ (#) = Absolute Change. Δ (%) = Percent Change.

**Table 16. Spartanburg MSA: Nonfarm Payroll by Economic Sector, NSA**

Sector	January 2026	MoM Δ (#)	MoM Δ (%)	YoY Δ (#)	YoY Δ (%)
Total Nonfarm	177,100	-2,600	-1.4	+1,200	+0.7
Total Private	147,100	-2,400	-1.6	+1,000	+0.7
Goods Producing	49,000	-300	-0.6	+800	+1.7
Service-Providing	128,100	-2,300	-1.8	+400	+0.3
Private Service Providing	98,100	-2,100	-2.1	+200	+0.2
Mining, Logging, and Construction	8,300	-100	-1.2	+400	+5.1
Manufacturing	40,700	-200	-0.5	+400	+1.0
Durable Goods	29,300	0	0.0	+1,100	+3.9
Non-Durable Goods	11,400	-200	-1.7	-700	-5.8
Trade, Transportation, and Utilities	37,100	-1,100	-2.9	-200	-0.5
Wholesale Trade	8,500	0	0.0	+500	+6.2
Retail Trade	19,200	-700	-3.5	+300	+1.6
Transportation, Warehousing, and Utilities	9,400	-400	-4.1	-1,000	-9.6
Information	900	0	0.0	0	0.0
Financial Activities	5,700	-100	-1.7	0	0.0
Professional and Business Services	16,300	-300	-1.8	0	0.0
Private Education and Health Services	17,500	-100	-0.6	+400	+2.3
Leisure and Hospitality	14,600	-500	-3.3	-100	-0.7
Other Services	6,000	0	0.0	+100	+1.7
Government	30,000	-200	-0.7	+200	+0.7
Federal Government	700	0	0.0	0	0.0
State Government	4,100	-100	-2.4	-100	-2.4
Local Government	25,200	-100	-0.4	+300	+1.2

Source: Bureau of Labor Statistics, Current Employment Statistics. Note: Current month's estimates are preliminary. All data are subject to revision. MSA = Metropolitan Statistical Area. NSA = Not Seasonally Adjusted. YoY = Year-over-Year. Δ (#) = Absolute Change. Δ (%) = Percent Change.

**Table 17. Florence MSA: Nonfarm Payroll by Economic Sector, NSA**

<b>Sector</b>	<b>January 2026</b>	<b>MoM Δ (#)</b>	<b>MoM Δ (%)</b>	<b>YoY Δ (#)</b>	<b>YoY Δ (%)</b>
Total Nonfarm	95,500	-1,600	-1.6	+100	+0.1
Total Private	76,100	-1,500	-1.9	-200	-0.3
Goods Producing	15,000	-100	-0.7	-200	-1.3
Service-Providing	80,500	-1,500	-1.8	+300	+0.4
Private Service Providing	61,100	-1,400	-2.2	0	0.0
Trade, Transportation, and Utilities	19,800	-600	-2.9	-400	-2.0
Government	19,400	-100	-0.5	+300	+1.6
Federal Government	700	0	0.0	0	0.0
State Government	5,400	-100	-1.8	+400	+8.0
Local Government	13,300	0	0.0	-100	-0.7

Source: Bureau of Labor Statistics, Current Employment Statistics. Note: Current month's estimates are preliminary. All data are subject to revision. MSA = Metropolitan Statistical Area. NSA = Not Seasonally Adjusted. YoY = Year-over-Year. Δ (#) = Absolute Change. Δ (%) = Percent Change.

**Table 18. Hilton Head Island-Bluffton-Beaufort MSA: Nonfarm Payroll by Economic Sector, NSA**

Sector	January 2026	MoM $\Delta$ (#)	MoM $\Delta$ (%)	YoY $\Delta$ (#)	YoY $\Delta$ (%)
Total Nonfarm	88,300	-1,700	-1.9	+2,500	+2.9
Total Private	75,500	-1,500	-1.9	+2,300	+3.1
Goods Producing	8,400	0	0.0	+700	+9.1
Service-Providing	79,900	-1,700	-2.1	+1,800	+2.3
Private Service Providing	67,100	-1,500	-2.2	+1,600	+2.4
Government	12,800	-200	-1.5	+200	+1.6

Source: Bureau of Labor Statistics, Current Employment Statistics. Note: Current month's estimates are preliminary. All data are subject to revision. MSA = Metropolitan Statistical Area. NSA = Not Seasonally Adjusted. YoY = Year-over-Year.  $\Delta$  (#) = Absolute Change.  $\Delta$  (%) = Percent Change.

**Table 19. Sumter MSA: Nonfarm Payroll by Economic Sector, NSA**

<b>Sector</b>	<b>January 2026</b>	<b>MoM <math>\Delta</math> (#)</b>	<b>MoM <math>\Delta</math> (%)</b>	<b>YoY <math>\Delta</math> (#)</b>	<b>YoY <math>\Delta</math> (%)</b>
Total Nonfarm	37,600	-600	-1.6	+100	+0.3
Total Private	31,600	-500	-1.6	+200	+0.6
Goods Producing	8,900	-100	-1.1	+200	+2.3
Service-Providing	28,700	-500	-1.7	-100	-0.3
Private Service Providing	22,700	-400	-1.7	0	0.0
Manufacturing	6,200	-100	-1.6	+200	+3.3
Government	6,000	-100	-1.6	-100	-1.6
Federal Government	1,200	0	0.0	-200	-14.3
State Government	1,300	-100	-7.1	0	0.0
Local Government	3,500	0	0.0	+100	+2.9

Source: Bureau of Labor Statistics, Current Employment Statistics. Note: Current month's estimates are preliminary. All data are subject to revision. MSA = Metropolitan Statistical Area. NSA = Not Seasonally Adjusted. YoY = Year-over-Year.  $\Delta$  (#) = Absolute Change.  $\Delta$  (%) = Percent Change.

For more information on South Carolina's LMI division and our funding sources, visit:

<https://lmi.sc.gov/About-Us/>.