

South Carolina Data Trends: March 2026

The South Carolina Department of Employment and Workforce, through its Labor Market Information (LMI) Division, summarizes the latest workforce data trends as of March 2026, providing key insights into employment and wages for the state and each of its metro areas. For questions or additional information, please contact the LMI Division at lmicustomerservice@dew.sc.gov.

Table 1. Labor Market Snapshot

Metric	March 2026	MoM Δ (#)	YoY Δ (#)
Unemployment	131,319	-2,014	+23,749
Employment	2,532,080	+7,337	+49,991
Labor Force	2,663,399	+5,323	+73,740

Source: Bureau of Labor Statistics, Local Area Unemployment Statistics. Note: Current month's estimates are preliminary. All data are subject to revision. Estimates are seasonally adjusted. MoM = Month-over-Month. YoY = Year-over-Year. Δ (#) = Absolute Change.

Table 2. Nonagricultural Employment by Industry, Seasonally Adjusted

Industry	March 2026	MoM Δ (#)	MoM Δ (%)	YoY Δ (#)	YoY Δ (%)
Total Nonfarm	2,399,100	+1,900	+0.1	+12,100	+0.5
Construction	125,900	+100	+0.1	+2,600	+2.1
Manufacturing	264,000	+200	+0.1	+1,900	+0.7
Trade, Transportation, and Utilities	444,400	+700	+0.2	-1,400	-0.3
Information	26,500	-100	-0.4	-1,300	-4.7
Financial Activities	122,200	-1,200	-1.0	-600	-0.5
Professional and Business Services	310,300	-300	-0.1	-8,500	-2.7
Private Education and Health Services	321,500	+900	+0.3	+7,900	+2.5
Leisure and Hospitality	286,200	+400	+0.1	+3,300	+1.2
Other Services	94,500	+1,300	+1.4	+3,400	+3.7
Government	398,800	-100	-0.0	+4,700	+1.2

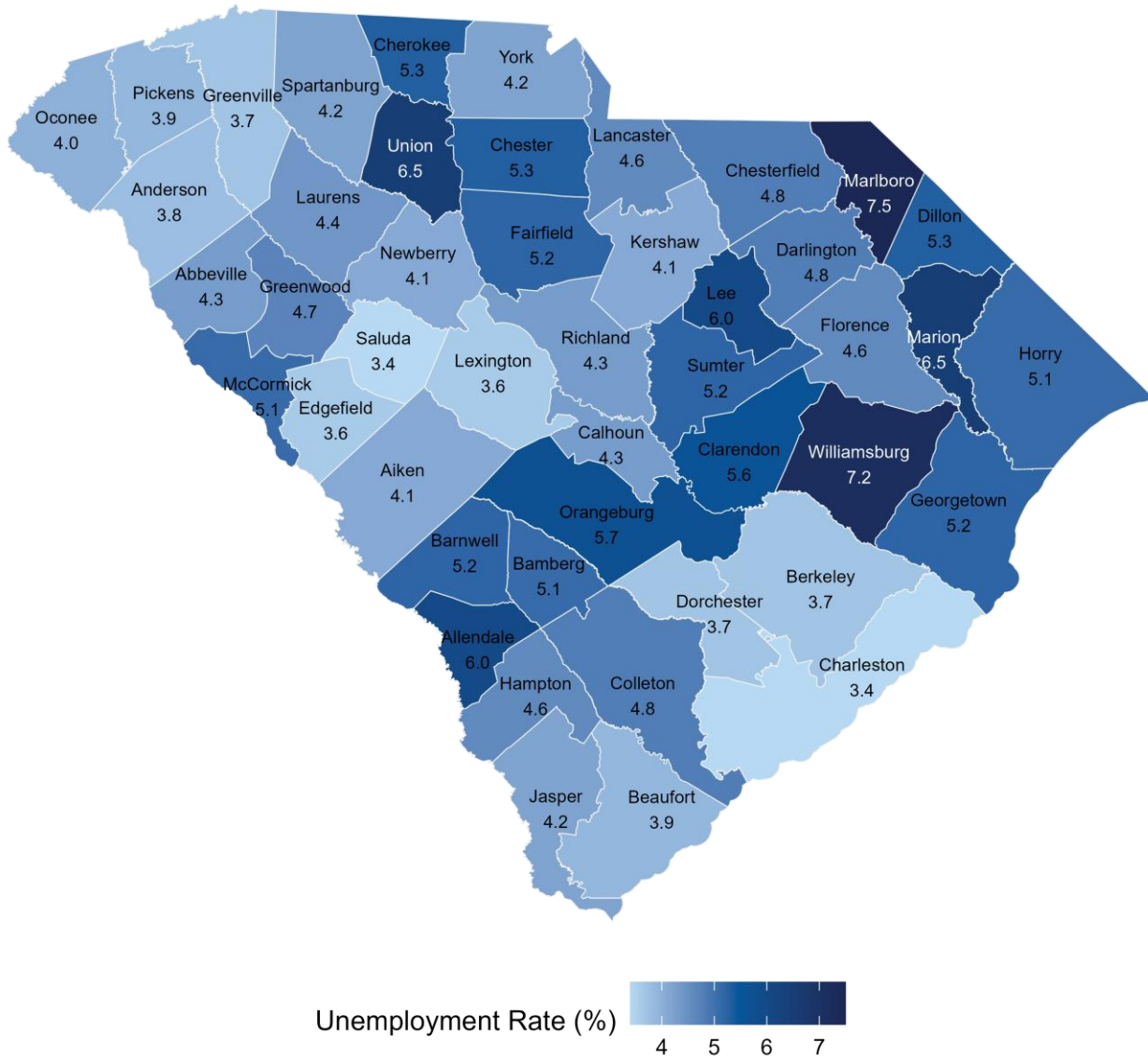
Source: Bureau of Labor Statistics, Current Employment Statistics. Note: Current month's estimates are preliminary. All data are subject to revision. MoM = Month-over-Month. YoY = Year-over-Year. Δ (#) = Absolute Change. Δ (%) = Percent Change.

Table 3. Nonagricultural Employment by Metropolitan Statistical Area, Seasonally Adjusted

Area	March 2026	MoM Δ (#)	MoM Δ (%)	YoY Δ (#)	YoY Δ (%)
Statewide	2,399,100	+1,900	+0.1	+12,100	+0.5
Charleston/North Charleston	432,000	+2,200	+0.5	-1,700	-0.4
Columbia	434,900	-100	-0.0	-600	-0.1
Florence	96,300	0	0.0	0	0.0
Greenville/Anderson/Mauldin	482,200	0	0.0	+2,500	+0.5
Hilton Head Island-Bluffton-Beaufort	89,600	0	0.0	+500	+0.6
Myrtle Beach	158,400	-200	-0.1	+2,500	+1.6
Spartanburg	178,900	+400	+0.2	+700	+0.4
Sumter	37,600	-100	-0.3	-300	-0.8

Source: Bureau of Labor Statistics, Current Employment Statistics. Note: Current month's estimates are preliminary. All data are subject to revision. MoM = Month-over-Month. YoY = Year-over-Year. Δ (#) = Absolute Change. Δ (%) = Percent Change.

Figure 1. Unemployment Rate by County, Not Seasonally Adjusted



Source: Bureau of Labor Statistics, Local Area Unemployment Statistics.

Table 4. Unemployment Estimates by County, Not Seasonally Adjusted

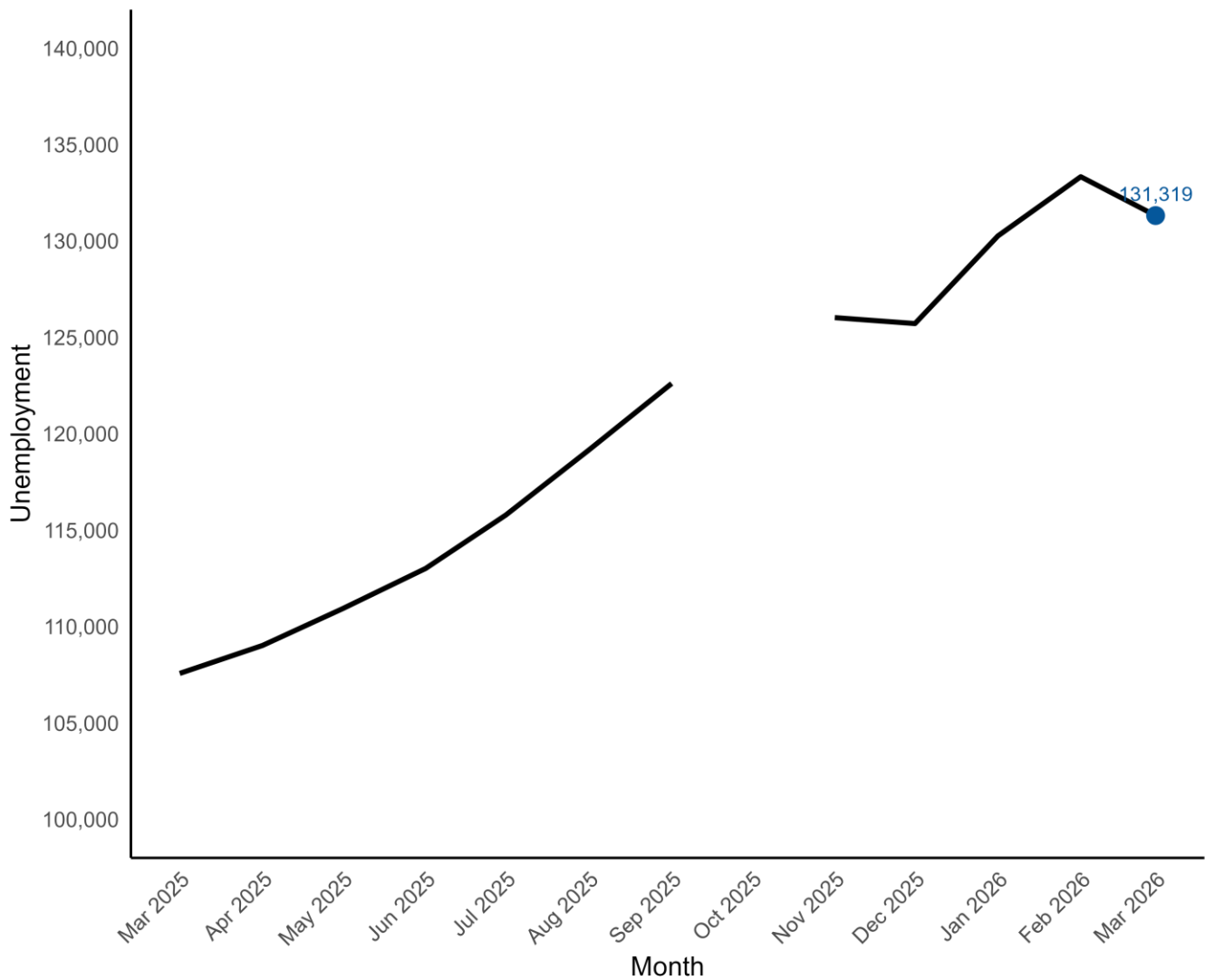
County	Labor Force	Employment	Unemp. Level	Unemp. Rate
Abbeville	10,815	10,350	465	4.3
Aiken	81,876	78,517	3,359	4.1
Allendale	2,944	2,768	176	6.0
Anderson	105,449	101,410	4,039	3.8
Bamberg	5,600	5,312	288	5.1
Barnwell	8,603	8,153	450	5.2
Beaufort	87,032	83,614	3,418	3.9
Berkeley	136,079	131,044	5,035	3.7
Calhoun	6,923	6,623	300	4.3
Charleston	241,319	233,114	8,205	3.4
Cherokee	24,300	23,015	1,285	5.3
Chester	14,910	14,115	795	5.3
Chesterfield	19,774	18,830	944	4.8
Clarendon	12,402	11,710	692	5.6
Colleton	16,219	15,446	773	4.8
Darlington	29,296	27,888	1,408	4.8
Dillon	12,753	12,074	679	5.3
Dorchester	90,383	87,041	3,342	3.7
Edgefield	13,476	12,991	485	3.6
Fairfield	10,077	9,554	523	5.2
Florence	66,721	63,667	3,054	4.6
Georgetown	28,659	27,172	1,487	5.2
Greenville	301,342	290,289	11,053	3.7
Greenwood	30,452	29,018	1,434	4.7
Hampton	8,508	8,120	388	4.6
Horry	179,977	170,769	9,208	5.1
Jasper	15,530	14,876	654	4.2

Table 4. Unemployment Estimates by County, Not Seasonally Adjusted

County	Labor Force	Employment	Unemp. Level	Unemp. Rate
Kershaw	34,406	33,008	1,398	4.1
Lancaster	52,141	49,766	2,375	4.6
Laurens	33,046	31,589	1,457	4.4
Lee	6,129	5,763	366	6.0
Lexington	162,037	156,144	5,893	3.6
Marion	12,538	11,723	815	6.5
Marlboro	8,633	7,985	648	7.5
McCormick	3,643	3,458	185	5.1
Newberry	19,744	18,936	808	4.1
Oconee	38,648	37,116	1,532	4.0
Orangeburg	36,220	34,155	2,065	5.7
Pickens	68,470	65,808	2,662	3.9
Richland	217,410	208,127	9,283	4.3
Saluda	9,845	9,509	336	3.4
Spartanburg	175,807	168,410	7,397	4.2
Sumter	43,541	41,275	2,266	5.2
Union	11,311	10,577	734	6.5
Williamsburg	11,005	10,215	790	7.2
York	159,805	153,068	6,737	4.2

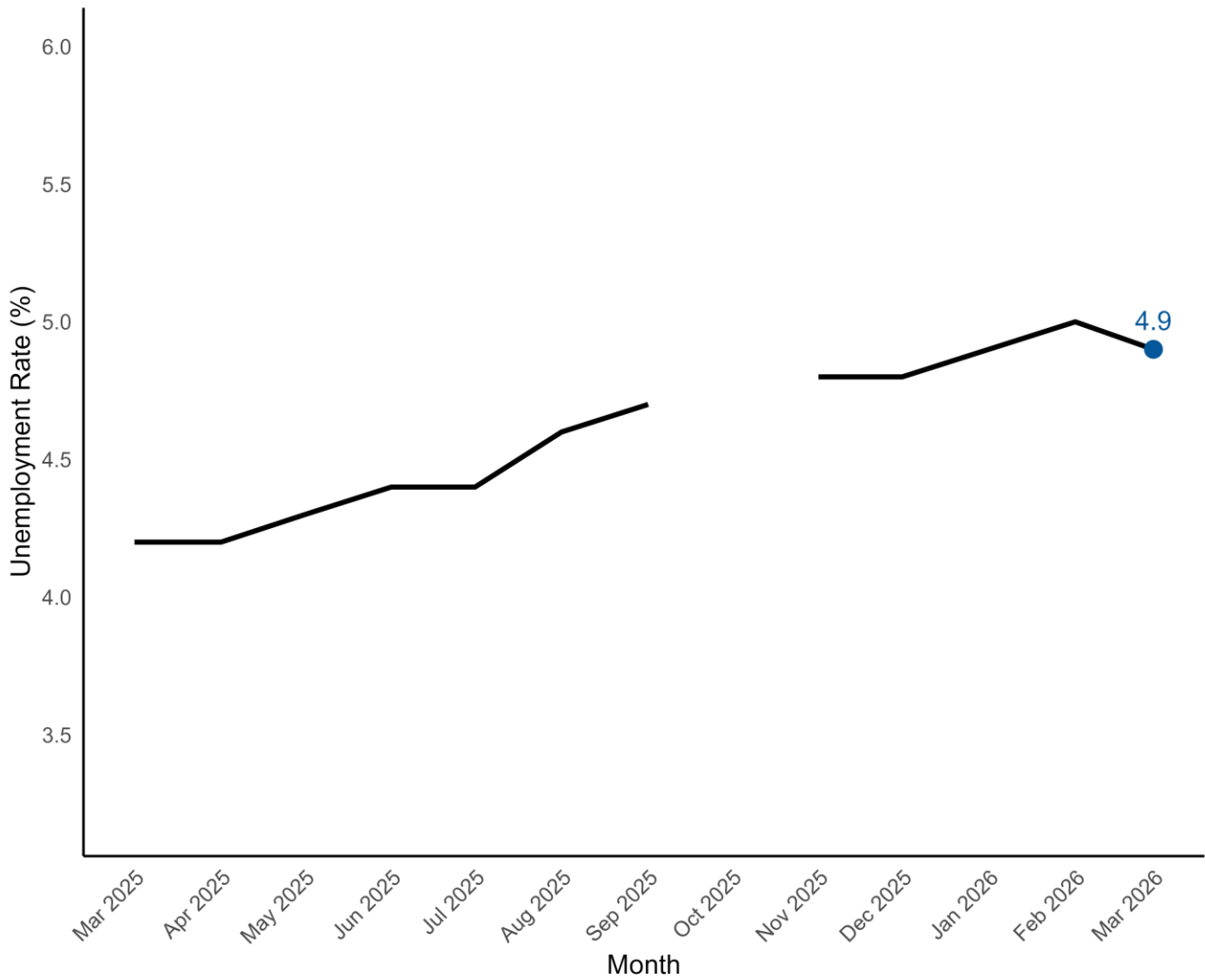
Source: Bureau of Labor Statistics, Local Area Unemployment Statistics. Note: Current month's estimates are preliminary. All data are subject to revision. Unemp = Unemployment.

Figure 2. Monthly Unemployment, Past 12 Months, Seasonally Adjusted



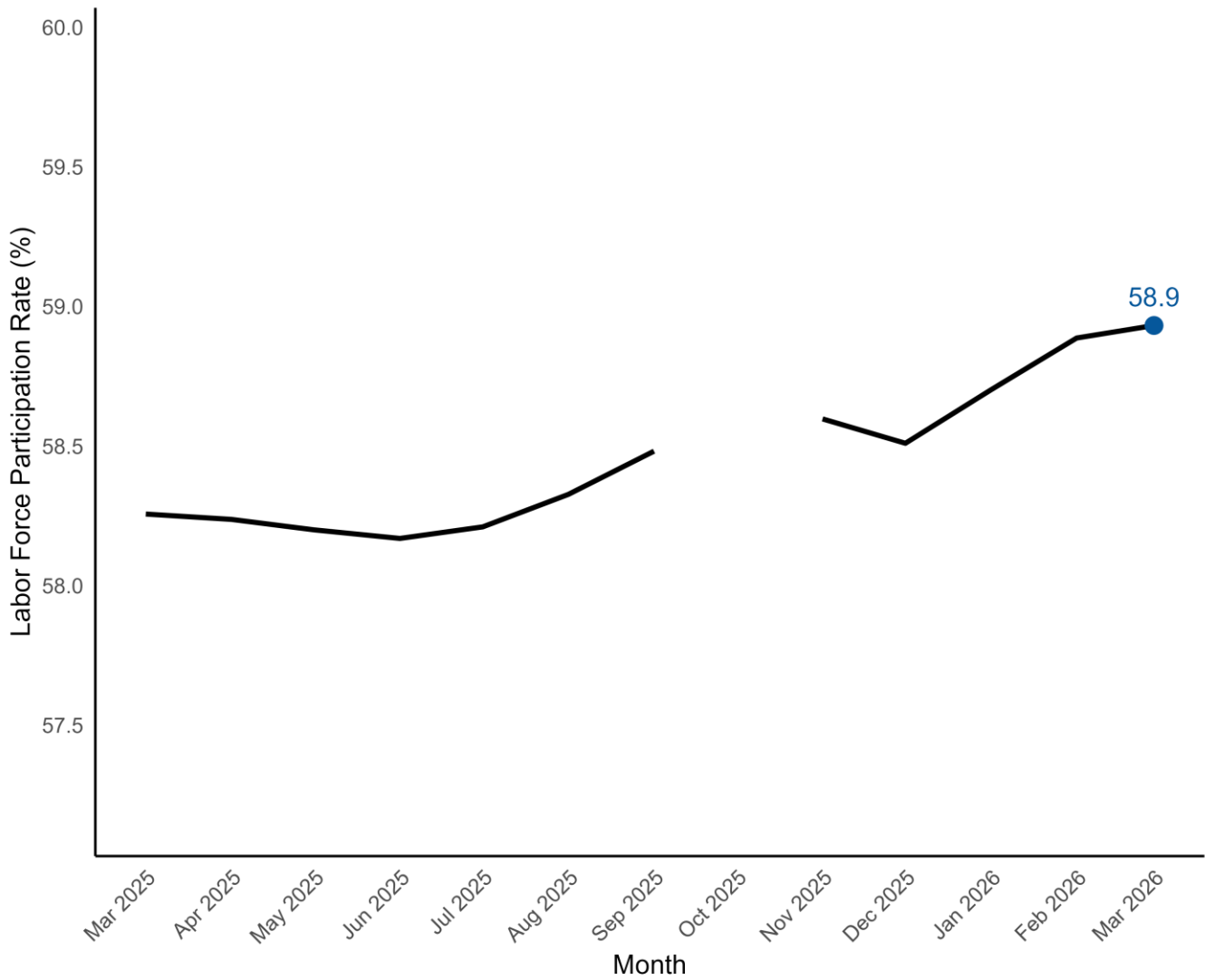
Source: Bureau of Labor Statistics, Local Area Unemployment Statistics.
Data for October 2025 are unavailable due to the federal government shutdown during that period.

Figure 3. Monthly Unemployment Rate, Past 12 months, Seasonally Adjusted



Source: Bureau of Labor Statistics, Local Area Unemployment Statistics.
Data for October 2025 are unavailable due to the federal government shutdown during that period.

Figure 4. Labor Force Participation, Past 12 Months, Seasonally Adjusted



Source: Bureau of Labor Statistics, Local Area Unemployment Statistics.
Data for October 2025 are unavailable due to the federal government shutdown during that period.

Table 5. NonFarm Payroll by Economic Sector, Seasonally Adjusted

Sector	March 2026	MoM Δ (#)	MoM Δ (%)	YoY Δ (#)	YoY Δ (%)
Total Nonfarm	2,399,100	+1,900	+0.1	+12,100	+0.5
Total Private	2,000,300	+2,000	+0.1	+7,400	+0.4
Goods Producing	394,700	+300	+0.1	+4,600	+1.2
Service-Providing	2,004,400	+1,600	+0.1	+7,500	+0.4
Private Service Providing	1,605,600	+1,700	+0.1	+2,800	+0.2
Mining and Logging	4,800	0	0.0	+100	+2.1
Mining, Logging, and Construction	130,700	+100	+0.1	+2,700	+2.1
Construction	125,900	+100	+0.1	+2,600	+2.1
Manufacturing	264,000	+200	+0.1	+1,900	+0.7
Durable Goods	167,700	+900	+0.5	+5,900	+3.6
Non-Durable Goods	96,300	-700	-0.7	-4,000	-4.0
Trade, Transportation, and Utilities	444,400	+700	+0.2	-1,400	-0.3
Wholesale Trade	86,000	+800	+0.9	+1,300	+1.5
Retail Trade	269,800	+200	+0.1	+100	+0.0
Transportation, Warehousing, and Utilities	88,600	-300	-0.3	-2,800	-3.1
Information	26,500	-100	-0.4	-1,300	-4.7
Financial Activities	122,200	-1,200	-1.0	-600	-0.5
Finance and Insurance	87,000	0	0.0	+400	+0.5
Real Estate and Rental and Leasing	35,200	-1,200	-3.3	-1,000	-2.8
Professional and Business Services	310,300	-300	-0.1	-8,500	-2.7
Professional, Scientific, and Technical	134,900	-200	-0.1	-3,100	-2.2
Management of Companies and Enterprises	25,300	+200	+0.8	+1,300	+5.4
Administrative and Support and Waste Management and Remediation Services	150,100	-300	-0.2	-6,700	-4.3
Private Education and Health Services	321,500	+900	+0.3	+7,900	+2.5
Private Educational Services	54,400	+400	+0.7	+1,100	+2.1
Health Care and Social Assistance	267,100	+500	+0.2	+6,800	+2.6

Table 5. NonFarm Payroll by Economic Sector, Seasonally Adjusted

Sector	March 2026	MoM Δ (#)	MoM Δ (%)	YoY Δ (#)	YoY Δ (%)
Leisure and Hospitality	286,200	+400	+0.1	+3,300	+1.2
Arts, Entertainment, and Recreation	37,500	+600	+1.6	-700	-1.8
Accommodation and Food Services	248,700	-200	-0.1	+4,000	+1.6
Other Services	94,500	+1,300	+1.4	+3,400	+3.7
Government	398,800	-100	-0.0	+4,700	+1.2
Federal Government	35,600	0	0.0	-2,500	-6.6
State Government	121,700	-200	-0.2	+3,900	+3.3
Local Government	241,500	+100	+0.0	+3,300	+1.4

Source: Bureau of Labor Statistics, Current Employment Statistics. Note: Current month's estimates are preliminary. All data are subject to revision. MoM = Month-over-Month. YoY = Year-over-Year. Δ (#) = Absolute Change. Δ (%) = Percent Change.

Table 6. Average Weekly Earnings by Metropolitan Statistical Area, Total Private, Not Seasonally Adjusted

Area	March 2026	MoM Δ (#)	MoM Δ (%)	YoY Δ (#)	YoY Δ (%)
Charleston-North Charleston	\$1,267.92	+\$17.90	+1.4	+\$62.96	+5.2
Columbia	\$1,018.31	+\$0.15	+0.0	-\$24.81	-2.4
Florence	\$853.04	+\$41.18	+5.1	+\$99.40	+13.2
Greenville-Anderson-Mauldin	\$1,220.40	+\$4.63	+0.4	+\$50.17	+4.3
Hilton Head Island-Bluffton-Beaufort	\$940.80	+\$35.29	+3.9	+\$67.06	+7.7
Myrtle Beach-Conway-North Myrtle Beach	\$863.19	+\$40.57	+4.9	+\$11.41	+1.3
Spartanburg	\$1,090.25	+\$8.30	+0.8	+\$13.60	+1.3
Sumter	\$981.08	-\$4.27	-0.4	+\$55.00	+5.9

Source: Bureau of Labor Statistics, Current Employment Statistics. Note: Current month's estimates are preliminary. All data are subject to revision. MoM = Month-over-Month. YoY = Year-over-Year. Δ (#) = Absolute Change. Δ (%) = Percent Change.

Table 7. Average Weekly Hours by Metropolitan Statistical Area, Total Private, Not Seasonally Adjusted

Area	March 2026	MoM Δ (#)	MoM Δ (%)	YoY Δ (#)	YoY Δ (%)
Charleston-North Charleston	34.9	0.1	+0.3	0.9	+2.6
Columbia	33.3	0.2	+0.6	-0.8	-2.3
Florence	32.3	0.4	+1.3	-0.9	-2.7
Greenville-Anderson-Mauldin	36.0	0.2	+0.6	0.9	+2.6
Hilton Head Island-Bluffton-Beaufort	32.0	1.0	+3.2	0.4	+1.3
Myrtle Beach-Conway-North Myrtle Beach	31.7	1.3	+4.3	0.0	0.0
Spartanburg	35.0	0.3	+0.9	-0.3	-0.8
Sumter	32.9	-0.4	-1.2	0.9	+2.8

Source: Bureau of Labor Statistics, Current Employment Statistics. Note: Current month's estimates are preliminary. All data are subject to revision. MoM = Month-over-Month. YoY = Year-over-Year. Δ (#) = Absolute Change. Δ (%) = Percent Change.

Table 8. Average Hourly Earnings by Metropolitan Statistical Area, Total Private, Not Seasonally Adjusted

Area	March 2026	MoM Δ (#)	MoM Δ (%)	YoY Δ (#)	YoY Δ (%)
Charleston-North Charleston	\$36.33	+\$0.41	+1.1	+\$0.89	+2.5
Columbia	\$30.58	-\$0.18	-0.6	-\$0.01	-0.0
Florence	\$26.41	+\$0.96	+3.8	+\$3.71	+16.3
Greenville-Anderson-Mauldin	\$33.90	-\$0.06	-0.2	+\$0.56	+1.7
Hilton Head Island-Bluffton-Beaufort	\$29.40	+\$0.19	+0.7	+\$1.75	+6.3
Myrtle Beach-Conway-North Myrtle Beach	\$27.23	+\$0.17	+0.6	+\$0.36	+1.3
Spartanburg	\$31.15	-\$0.03	-0.1	+\$0.65	+2.1
Sumter	\$29.82	+\$0.23	+0.8	+\$0.88	+3.0

Source: Bureau of Labor Statistics, Current Employment Statistics. Note: Current month's estimates are preliminary. All data are subject to revision. MoM = Month-over-Month. YoY = Year-over-Year. Δ (#) = Absolute Change. Δ (%) = Percent Change.

Table 9. Average Weekly Earnings by Industry, Statewide, Not Seasonally Adjusted

Industry	March 2026	MoM Δ (#)	MoM Δ (%)	YoY Δ (#)	YoY Δ (%)
Total Private	\$1,137.83	-\$13.75	-1.2	+\$49.15	+4.5
Goods Producing	\$1,468.53	+\$24.59	+1.7	+\$62.61	+4.5
Construction	\$1,368.50	-\$5.94	-0.4	-\$18.94	-1.4
Manufacturing	\$1,501.74	+\$37.64	+2.6	+\$116.01	+8.4
Private Service Providing	\$1,058.17	-\$18.88	-1.8	+\$44.82	+4.4
Trade, Transportation, and Utilities	\$986.83	-\$3.81	-0.4	+\$27.05	+2.8
Financial Activities	\$1,410.83	-\$15.79	-1.1	+\$73.61	+5.5
Professional and Business Services	\$1,531.62	-\$13.00	-0.8	+\$88.09	+6.1
Private Education and Health Services	\$1,018.49	+\$13.93	+1.4	+\$9.38	+0.9
Leisure and Hospitality	\$511.81	+\$9.41	+1.9	+\$19.29	+3.9
Other Services	\$968.94	+\$18.20	+1.9	+\$9.52	+1.0

Source: Bureau of Labor Statistics, Current Employment Statistics. Note: Current month's estimates are preliminary. All data are subject to revision. MoM = Month-over-Month. YoY = Year-over-Year. Δ (#) = Absolute Change. Δ (%) = Percent Change.

Table 10. Average Weekly Hours by Industry, Statewide, Not Seasonally Adjusted

Industry	March 2026	MoM Δ (#)	MoM Δ (%)	YoY Δ (#)	YoY Δ (%)
Total Private	34.2	0.2	+0.6	0.2	+0.6
Goods Producing	40.5	0.7	+1.8	0.1	+0.2
Construction	40.5	-0.2	-0.5	-0.5	-1.2
Manufacturing	40.5	1.1	+2.8	0.6	+1.5
Private Service Providing	32.7	0.2	+0.6	0.2	+0.6
Trade, Transportation, and Utilities	33.9	0.5	+1.5	0.4	+1.2
Financial Activities	35.6	0.2	+0.6	-2.1	-5.6
Professional and Business Services	38.3	-0.2	-0.5	0.0	0.0
Private Education and Health Services	32.2	0.4	+1.3	0.9	+2.9
Leisure and Hospitality	25.2	0.8	+3.3	0.5	+2.0
Other Services	31.5	0.9	+2.9	-1.1	-3.4

Source: Bureau of Labor Statistics, Current Employment Statistics. Note: Current month's estimates are preliminary. All data are subject to revision. MoM = Month-over-Month. YoY = Year-over-Year. Δ (#) = Absolute Change. Δ (%) = Percent Change.

Table 11. Average Hourly Earnings by Industry, Statewide, Not Seasonally Adjusted

Industry	March 2026	MoM Δ (#)	MoM Δ (%)	YoY Δ (#)	YoY Δ (%)
Total Private	\$33.27	-\$0.60	-1.8	+\$1.25	+3.9
Goods Producing	\$36.26	-\$0.02	-0.1	+\$1.46	+4.2
Construction	\$33.79	+\$0.02	+0.1	-\$0.05	-0.1
Manufacturing	\$37.08	-\$0.08	-0.2	+\$2.35	+6.8
Private Service Providing	\$32.36	-\$0.78	-2.4	+\$1.18	+3.8
Trade, Transportation, and Utilities	\$29.11	-\$0.55	-1.9	+\$0.46	+1.6
Financial Activities	\$39.63	-\$0.67	-1.7	+\$4.16	+11.7
Professional and Business Services	\$39.99	-\$0.13	-0.3	+\$2.30	+6.1
Private Education and Health Services	\$31.63	+\$0.04	+0.1	-\$0.61	-1.9
Leisure and Hospitality	\$20.31	-\$0.28	-1.4	+\$0.37	+1.9
Other Services	\$30.76	-\$0.31	-1.0	+\$1.33	+4.5

Source: Bureau of Labor Statistics, Current Employment Statistics. Note: Current month's estimates are preliminary. All data are subject to revision. YoY = Year-over-Year. Δ (#) = Absolute Change. Δ (%) = Percent Change.

Table 12. Charleston-North Charleston MSA: Nonfarm Payroll by Economic Sector, NSA

Sector	March 2026	MoM Δ (#)	MoM Δ (%)	YoY Δ (#)	YoY Δ (%)
Total Nonfarm	429,600	+4,300	+1.0	-3,300	-0.8
Total Private	356,600	+4,100	+1.2	-4,100	-1.1
Goods Producing	60,900	+400	+0.7	+1,700	+2.9
Service-Providing	368,700	+3,900	+1.1	-5,000	-1.3
Private Service Providing	295,700	+3,700	+1.3	-5,800	-1.9
Mining, Logging, and Construction	26,600	+100	+0.4	+1,800	+7.3
Manufacturing	34,300	+300	+0.9	-100	-0.3
Trade, Transportation, and Utilities	76,100	0	0.0	-1,800	-2.3
Wholesale Trade	13,700	+100	+0.7	+100	+0.7
Retail Trade	44,300	-100	-0.2	-1,100	-2.4
General Merchandise Stores	8,400	-100	-1.2	-200	-2.3
Transportation, Warehousing, and Utilities	18,100	0	0.0	-800	-4.2
Information	7,800	0	0.0	-300	-3.7
Financial Activities	22,000	0	0.0	+300	+1.4
Professional and Business Services	67,500	+900	+1.4	-3,000	-4.3
Administrative and Support and Waste Management	27,100	+800	+3.0	-1,800	-6.2
Private Education and Health Services	51,100	0	0.0	+100	+0.2
Leisure and Hospitality	54,200	+2,600	+5.0	-1,500	-2.7
Accommodation and Food Services	47,300	+2,300	+5.1	-1,100	-2.3
Food Services and Drinking Places	39,000	+2,000	+5.4	-800	-2.0
Other Services	17,000	+200	+1.2	+400	+2.4
Government	73,000	+200	+0.3	+800	+1.1
Federal Government	11,500	0	0.0	-700	-5.7
State Government	30,000	+100	+0.3	+1,800	+6.4
Local Government	31,500	+100	+0.3	-300	-0.9

Source: Bureau of Labor Statistics, Current Employment Statistics. Note: Current month's estimates are preliminary. All data are subject to revision. MSA = Metropolitan Statistical Area. NSA = Not Seasonally Adjusted. YoY = Year-over-Year. Δ (#) = Absolute Change. Δ (%) = Percent Change.

Table 13. Columbia MSA: Nonfarm Payroll by Economic Sector, NSA

Sector	March 2026	MoM Δ (#)	MoM Δ (%)	YoY Δ (#)	YoY Δ (%)
Total Nonfarm	433,800	+1,100	+0.3	-1,100	-0.3
Total Private	346,000	+1,100	+0.3	-1,700	-0.5
Goods Producing	51,400	0	0.0	0	0.0
Service-Providing	382,400	+1,100	+0.3	-1,100	-0.3
Private Service Providing	294,600	+1,100	+0.4	-1,700	-0.6
Mining, Logging, and Construction	19,600	0	0.0	+700	+3.7
Manufacturing	31,800	0	0.0	-700	-2.2
Trade, Transportation, and Utilities	77,900	+200	+0.3	+400	+0.5
Wholesale Trade	15,600	+200	+1.3	0	0.0
Retail Trade	44,700	+200	+0.4	-300	-0.7
Transportation, Warehousing, and Utilities	17,600	-200	-1.1	+700	+4.1
Information	4,200	-100	-2.3	-200	-4.5
Financial Activities	34,500	-200	-0.6	-900	-2.5
Credit Intermediation and Related Activities including Monetary Authorities - Central Bank	6,000	0	0.0	0	0.0
Professional and Business Services	53,500	-700	-1.3	-3,000	-5.3
Administrative and Support and Waste Management	27,800	-100	-0.4	-1,300	-4.5
Private Education and Health Services	65,900	+200	+0.3	+1,800	+2.8
Leisure and Hospitality	40,200	+1,400	+3.6	-500	-1.2
Food Services and Drinking Places	34,000	+500	+1.5	-100	-0.3
Other Services	18,400	+300	+1.7	+700	+4.0
Government	87,800	0	0.0	+600	+0.7
Federal Government	11,200	-100	-0.9	-900	-7.4
State Government	39,000	+100	+0.3	+800	+2.1
Local Government	37,600	0	0.0	+700	+1.9

Source: Bureau of Labor Statistics, Current Employment Statistics. Note: Current month's estimates are preliminary. All data are subject to revision. MSA = Metropolitan Statistical Area. NSA = Not Seasonally Adjusted. YoY = Year-over-Year. Δ (#) = Absolute Change. Δ (%) = Percent Change.

Table 14. Greenville-Anderson-Mauldin MSA: Nonfarm Payroll by Economic Sector, NSA

Sector	March 2026	MoM Δ (#)	MoM Δ (%)	YoY Δ (#)	YoY Δ (%)
Total Nonfarm	481,500	+1,700	+0.4	+1,600	+0.3
Total Private	415,700	+1,700	+0.4	+1,100	+0.3
Goods Producing	86,200	+300	+0.3	-300	-0.3
Service-Providing	395,300	+1,400	+0.4	+1,900	+0.5
Private Service Providing	329,500	+1,400	+0.4	+1,400	+0.4
Mining, Logging, and Construction	25,200	0	0.0	-200	-0.8
Manufacturing	61,000	+300	+0.5	-100	-0.2
Trade, Transportation, and Utilities	83,800	+100	+0.1	-200	-0.2
Wholesale Trade	21,400	+200	+0.9	+300	+1.4
Retail Trade	49,200	0	0.0	-200	-0.4
Transportation, Warehousing, and Utilities	13,200	-100	-0.8	-300	-2.2
Information	5,400	0	0.0	-300	-5.3
Financial Activities	22,600	-400	-1.7	-200	-0.9
Professional and Business Services	76,800	-100	-0.1	-2,200	-2.8
Professional, Scientific, and Technical Services	33,300	-300	-0.9	-1,100	-3.2
Management of Companies and Enterprises	6,800	0	0.0	+100	+1.5
Administrative and Support and Waste Management	36,700	+200	+0.5	-1,200	-3.2
Private Education and Health Services	70,500	+100	+0.1	+2,300	+3.4
Educational Services	16,400	+200	+1.2	+800	+5.1
Health Care and Social Assistance	54,100	-100	-0.2	+1,500	+2.9
Leisure and Hospitality	52,700	+1,500	+2.9	+1,500	+2.9
Other Services	17,700	+200	+1.1	+500	+2.9
Government	65,800	0	0.0	+500	+0.8
Federal Government	2,900	0	0.0	-200	-6.5
State Government	15,900	+100	+0.6	0	0.0
Local Government	47,000	-100	-0.2	+700	+1.5

Source: Bureau of Labor Statistics, Current Employment Statistics. Note: Current month's estimates are preliminary. All data are subject to revision. MSA = Metropolitan Statistical Area. NSA = Not Seasonally Adjusted. YoY = Year-over-Year. Δ (#) = Absolute Change. Δ (%) = Percent Change.

Table 15. Myrtle Beach-Conway-North Myrtle Beach MSA: Nonfarm Payroll by Economic Sector, NSA

Sector	March 2026	MoM Δ (#)	MoM Δ (%)	YoY Δ (#)	YoY Δ (%)
Total Nonfarm	156,300	+3,300	+2.2	+2,200	+1.4
Total Private	133,600	+3,200	+2.5	+1,400	+1.1
Goods Producing	14,000	+100	+0.7	+400	+2.9
Service-Providing	142,300	+3,200	+2.3	+1,800	+1.3
Private Service Providing	119,600	+3,100	+2.7	+1,000	+0.8
Mining, Logging, and Construction	10,500	+100	+1.0	+300	+2.9
Manufacturing	3,500	0	0.0	+100	+2.9
Trade, Transportation, and Utilities	33,000	+400	+1.2	+200	+0.6
Wholesale Trade	3,500	+100	+2.9	0	0.0
Retail Trade	26,500	+300	+1.1	+300	+1.1
Transportation, Warehousing, and Utilities	3,000	0	0.0	-100	-3.2
Information	1,800	0	0.0	-100	-5.3
Financial Activities	8,700	0	0.0	+200	+2.4
Professional and Business Services	15,500	-100	-0.6	-800	-4.9
Private Education and Health Services	18,500	0	0.0	+400	+2.2
Leisure and Hospitality	36,100	+2,800	+8.4	+800	+2.3
Accommodation and Food Services	31,000	+2,300	+8.0	+1,000	+3.3
Food Services and Drinking Places	23,400	+1,200	+5.4	-200	-0.8
Other Services	6,000	0	0.0	+300	+5.3
Government	22,700	+100	+0.4	+800	+3.7
Federal Government	1,100	0	0.0	0	0.0
State Government	4,900	+100	+2.1	+100	+2.1
Local Government	16,700	0	0.0	+700	+4.4

Source: Bureau of Labor Statistics, Current Employment Statistics. Note: Current month's estimates are preliminary. All data are subject to revision. MSA = Metropolitan Statistical Area. NSA = Not Seasonally Adjusted. YoY = Year-over-Year. Δ (#) = Absolute Change. Δ (%) = Percent Change.

Table 16. Spartanburg MSA: Nonfarm Payroll by Economic Sector, NSA

Sector	March 2026	MoM Δ (#)	MoM Δ (%)	YoY Δ (#)	YoY Δ (%)
Total Nonfarm	178,700	+1,000	+0.6	-100	-0.1
Total Private	148,300	+800	+0.5	-300	-0.2
Goods Producing	49,700	+300	+0.6	+600	+1.2
Service-Providing	129,000	+700	+0.5	-700	-0.5
Private Service Providing	98,600	+500	+0.5	-900	-0.9
Mining, Logging, and Construction	8,400	+100	+1.2	+200	+2.4
Manufacturing	41,300	+200	+0.5	+400	+1.0
Durable Goods	29,800	+200	+0.7	+1,000	+3.5
Non-Durable Goods	11,500	0	0.0	-600	-5.0
Trade, Transportation, and Utilities	37,000	+100	+0.3	-500	-1.3
Wholesale Trade	8,700	+100	+1.2	+400	+4.8
Retail Trade	19,300	+100	+0.5	+200	+1.0
Transportation, Warehousing, and Utilities	9,000	-100	-1.1	-1,100	-10.9
Information	800	-100	-11.1	-100	-11.1
Financial Activities	5,700	0	0.0	0	0.0
Professional and Business Services	16,300	0	0.0	-500	-3.0
Private Education and Health Services	17,700	0	0.0	+300	+1.7
Leisure and Hospitality	15,000	+500	+3.4	-200	-1.3
Other Services	6,100	0	0.0	+100	+1.7
Government	30,400	+200	+0.7	+200	+0.7
Federal Government	700	0	0.0	0	0.0
State Government	4,300	+100	+2.4	0	0.0
Local Government	25,400	+100	+0.4	+200	+0.8

Source: Bureau of Labor Statistics, Current Employment Statistics. Note: Current month's estimates are preliminary. All data are subject to revision. MSA = Metropolitan Statistical Area. NSA = Not Seasonally Adjusted. YoY = Year-over-Year. Δ (#) = Absolute Change. Δ (%) = Percent Change.

Table 17. Florence MSA: Nonfarm Payroll by Economic Sector, NSA

Sector	March 2026	MoM Δ (#)	MoM Δ (%)	YoY Δ (#)	YoY Δ (%)
Total Nonfarm	95,800	+400	+0.4	-700	-0.7
Total Private	76,200	+300	+0.4	-800	-1.0
Goods Producing	14,800	-100	-0.7	-400	-2.6
Service-Providing	81,000	+500	+0.6	-300	-0.4
Private Service Providing	61,400	+400	+0.7	-400	-0.6
Trade, Transportation, and Utilities	19,400	0	0.0	-800	-4.0
Government	19,600	+100	+0.5	+100	+0.5
Federal Government	700	0	0.0	0	0.0
State Government	5,500	0	0.0	+100	+1.9
Local Government	13,400	+100	+0.8	0	0.0

Source: Bureau of Labor Statistics, Current Employment Statistics. Note: Current month's estimates are preliminary. All data are subject to revision. MSA = Metropolitan Statistical Area. NSA = Not Seasonally Adjusted. YoY = Year-over-Year. Δ (#) = Absolute Change. Δ (%) = Percent Change.

Table 18. Hilton Head Island-Bluffton-Beaufort MSA: Nonfarm Payroll by Economic Sector, NSA

Sector	March 2026	MoM Δ (#)	MoM Δ (%)	YoY Δ (#)	YoY Δ (%)
Total Nonfarm	88,700	+400	+0.5	+500	+0.6
Total Private	75,600	+400	+0.5	+300	+0.4
Goods Producing	8,300	0	0.0	+300	+3.8
Service-Providing	80,400	+400	+0.5	+200	+0.2
Private Service Providing	67,300	+400	+0.6	0	0.0
Government	13,100	0	0.0	+200	+1.6

Source: Bureau of Labor Statistics, Current Employment Statistics. Note: Current month's estimates are preliminary. All data are subject to revision. MSA = Metropolitan Statistical Area. NSA = Not Seasonally Adjusted. YoY = Year-over-Year. Δ (#) = Absolute Change. Δ (%) = Percent Change.

Table 19. Sumter MSA: Nonfarm Payroll by Economic Sector, NSA

Sector	March 2026	MoM Δ (#)	MoM Δ (%)	YoY Δ (#)	YoY Δ (%)
Total Nonfarm	37,400	-100	-0.3	-500	-1.3
Total Private	31,300	-100	-0.3	-400	-1.3
Goods Producing	8,600	-200	-2.3	-100	-1.1
Service-Providing	28,800	+100	+0.3	-400	-1.4
Private Service Providing	22,700	+100	+0.4	-300	-1.3
Manufacturing	6,100	-100	-1.6	+100	+1.7
Government	6,100	0	0.0	-100	-1.6
Federal Government	1,200	0	0.0	-200	-14.3
State Government	1,400	0	0.0	0	0.0
Local Government	3,500	0	0.0	+100	+2.9

Source: Bureau of Labor Statistics, Current Employment Statistics. Note: Current month's estimates are preliminary. All data are subject to revision. MSA = Metropolitan Statistical Area. NSA = Not Seasonally Adjusted. YoY = Year-over-Year. Δ (#) = Absolute Change. Δ (%) = Percent Change.

For more information on South Carolina's LMI division and our funding sources, visit:

<https://lmi.sc.gov/About-Us/>.