



Emerging Education into Regional Economic Overview

Wylondria Jefferson; Workforce Outreach Coordinator

Leah Price; Workforce Insights Analyst for the Upstate Regions

in the Labor Market Information Division at the South Carolina Department of Employment and Workforce

for Worklink RWA

September 14, 2023

PURPOSE

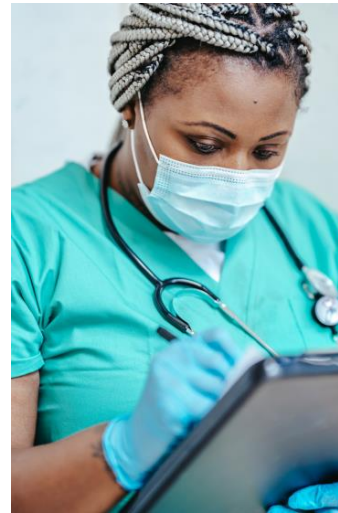
- The purpose of this presentation is to provide a brief overview of the WorkLink Area.
 - Methodology & Process
 - Projections Concepts and Calculations
 - Variables & Models
 - Occupational and Employment Wage Statistics (OEWS)
 - Quarterly Census of Employment and Wages (QCEW)
 - Occupational Projections 2020-2030
 - Accessing our data

TOP 20 OCCUPATIONAL OPENINGS

Occupation Name (Soccode)	Job Openings
Registered Nurses (29-1141)	342
First-Line Supervisors of Retail Sales Workers (41-1011)	234
Retail Salespersons (41-2031)	190
Licensed Practical and Licensed Vocational Nurses (29-2061)	116
Fast Food and Counter Workers (35-3023)	97
Customer Service Representatives (43-4051)	93
Maintenance and Repair Workers, General (49-9071)	93
Food Service Managers (11-9051)	90
Janitors and Cleaners, Except Maids and Housekeeping Cleaners (37-2011)	90
Laborers and Freight, Stock, and Material Movers, Hand (53-7062)	73
Medical and Health Services Managers (11-9111)	71
Stockers and Order Fillers (53-7065)	71
Cashiers (41-2011)	70
Managers, All Other (11-9199)	66
Sales Representatives, Wholesale and Manufacturing, Except Technical and Scientific Products (41-4012)	63
Secretaries and Administrative Assistants, Except Legal, Medical, and Executive (43-6014)	63
Industrial Engineering Technologists and Technicians (17-3026)	62
First-Line Supervisors of Food Preparation and Serving Workers (35-1012)	57
Nursing Assistants (31-1131)	54
Coaches and Scouts (27-2022)	51

Source: S.C. Department of Employment & Workforce & The Conference Board's Help Wanted OnLine® data series

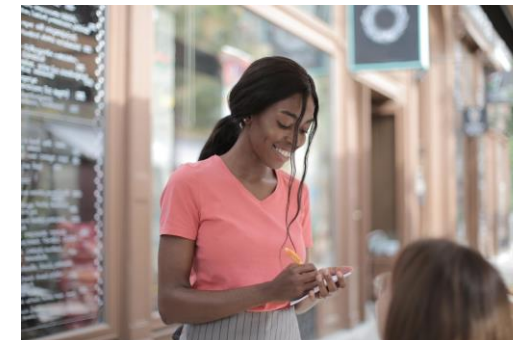
Registered Nurses 342 Job Openings



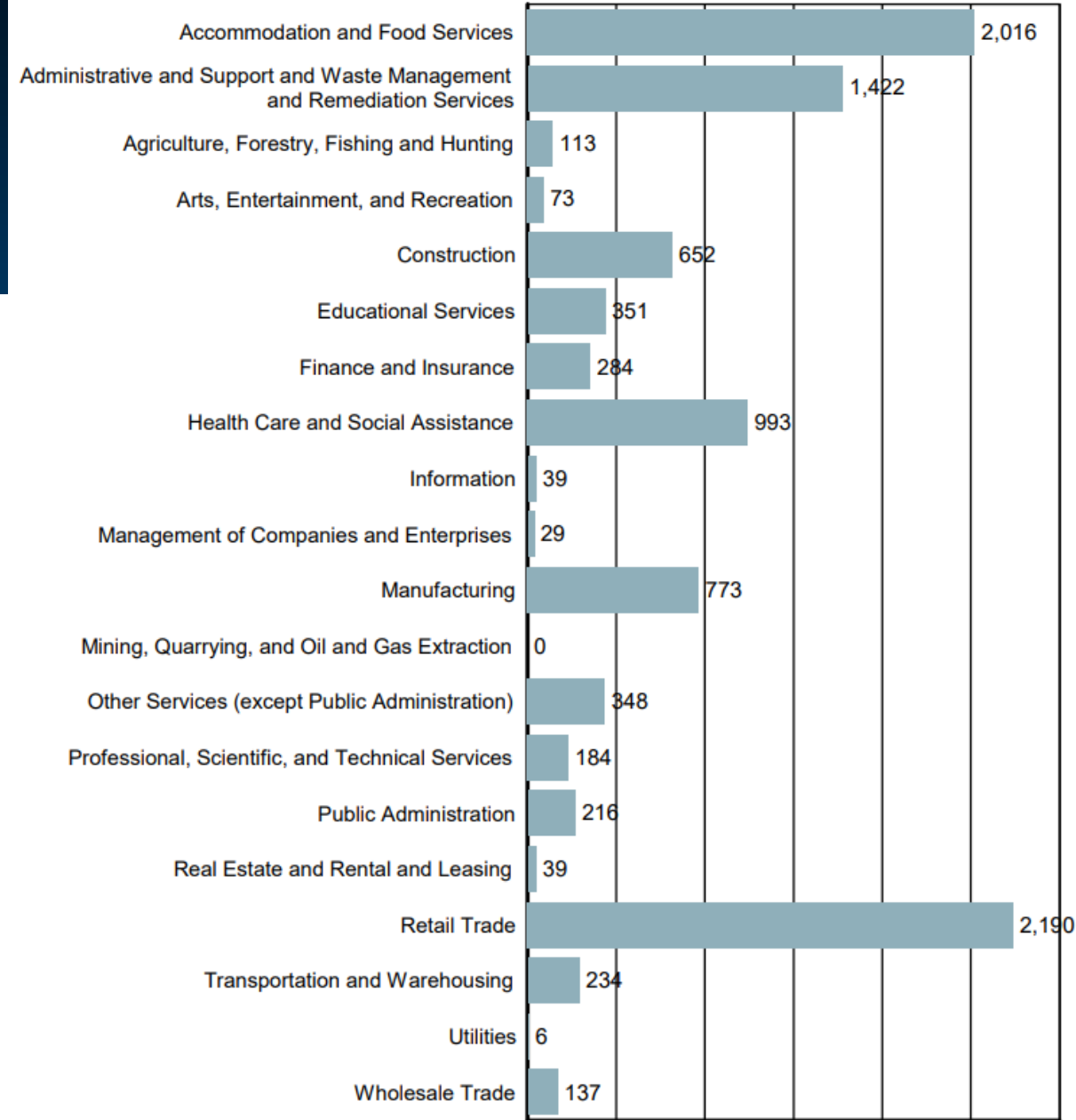
First-Line Supervisors 234 Job Openings



Retail Salesperson 190 Job Openings



*NEW HIRES BY INDUSTRY



Source: U.S. Census Bureau, Local Employment Dynamics, 2020 Q3

**Retail Trade
2,190 New Hires**



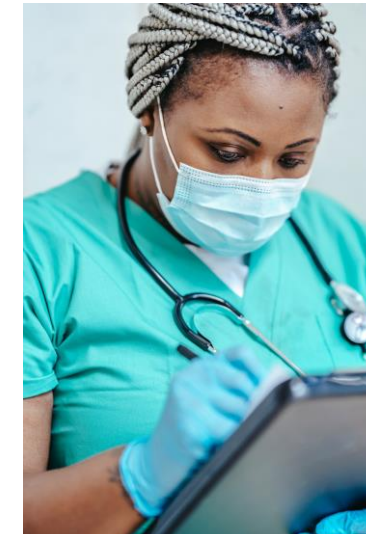
**Food Service
2,016 New Hires**



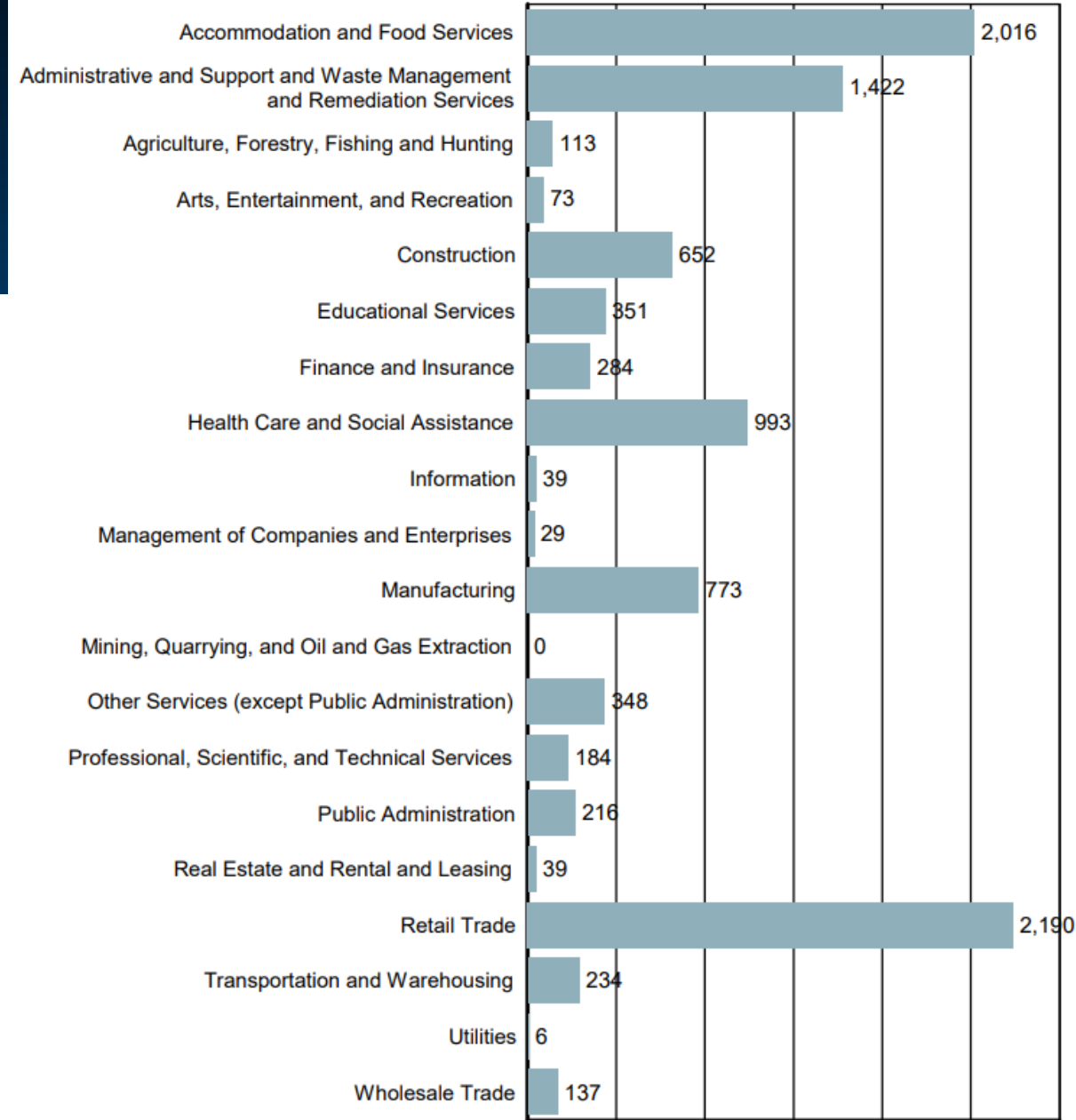
**Waste Management/Administrative
1,422 New Hires**



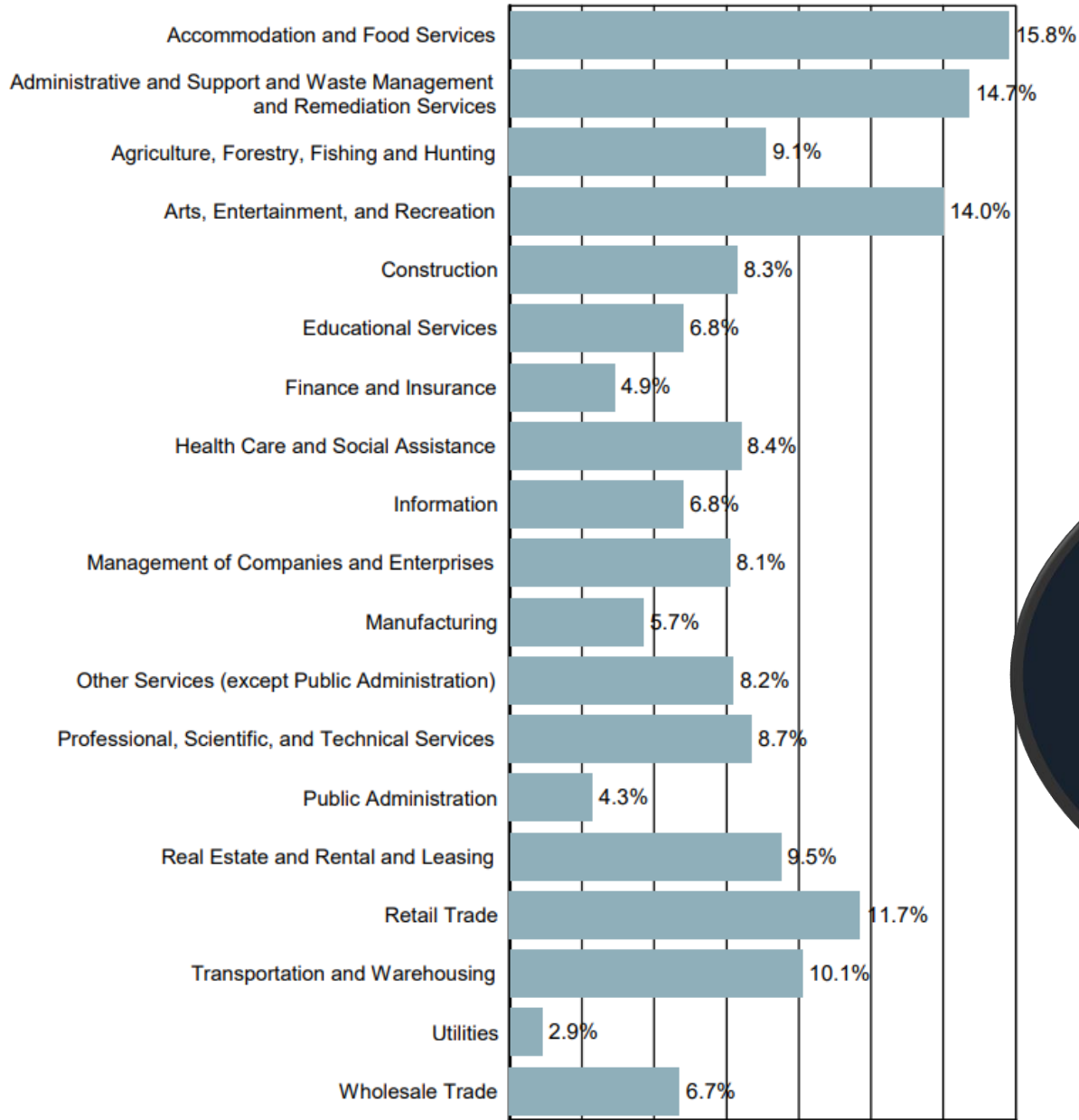
**Health Care
993 New Hires**



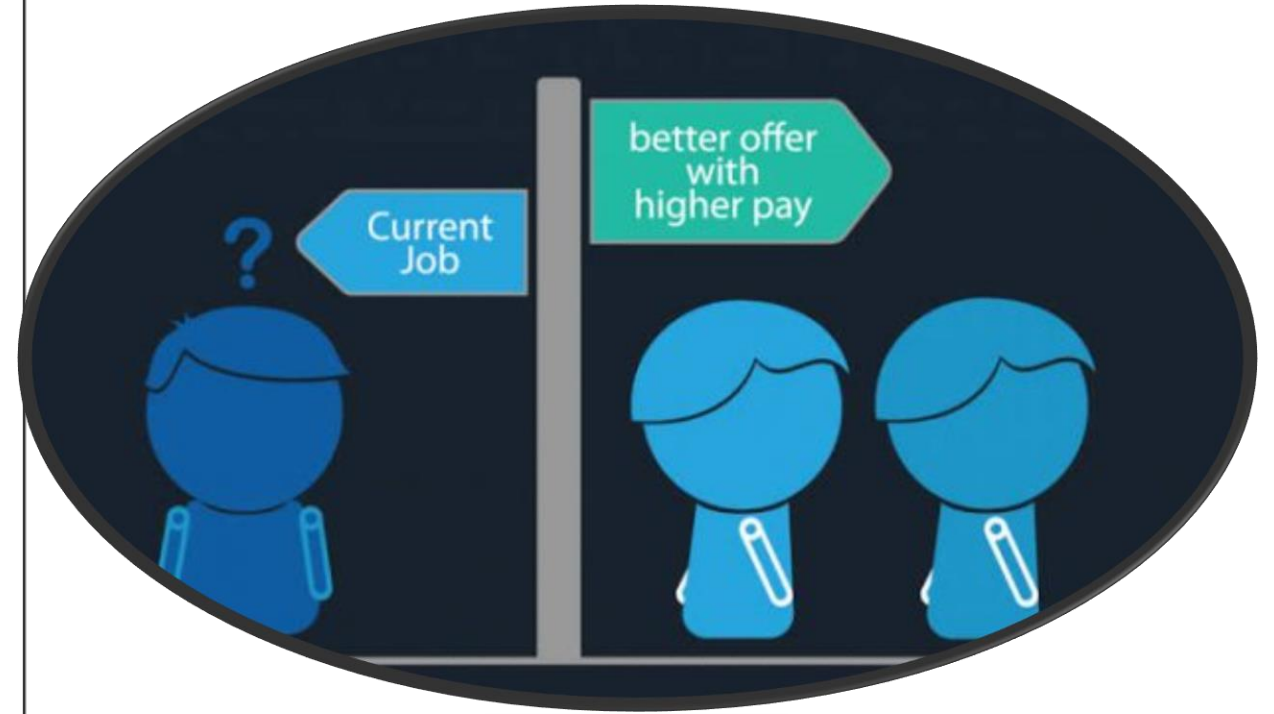
*NEW HIRES BY INDUSTRY



Source: U.S. Census Bureau, Local Employment Dynamics, 2020 Q3



*TURNOVER BY INDUSTRY



Source: U.S. Census Bureau, Local Employment Dynamics - 2020 Q1

Accommodation and Food Services 15.8% Turnover



Waste Management 14.7% Turnover

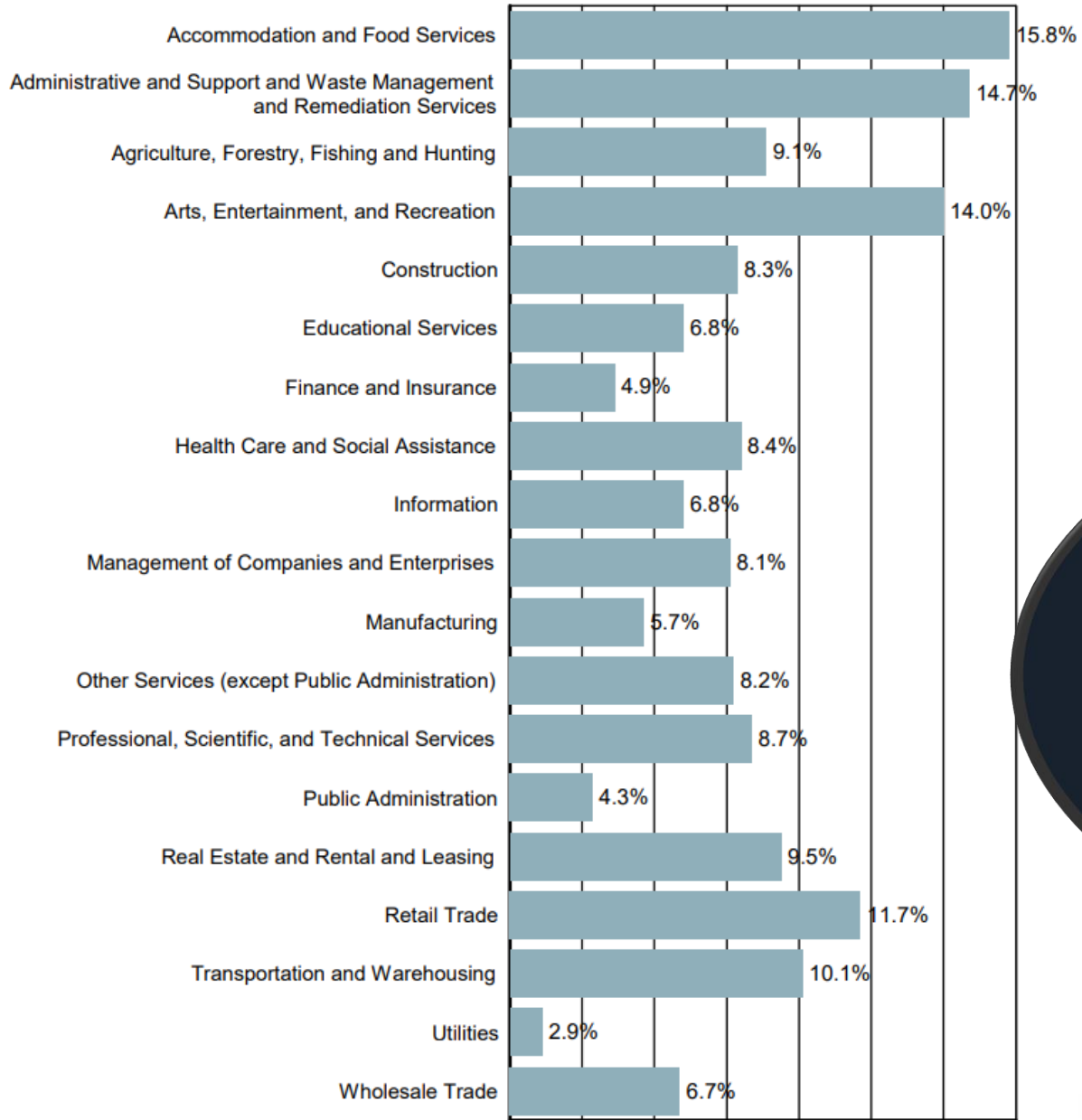


Arts, Entertainment, and Recreation 14.0% Turnover

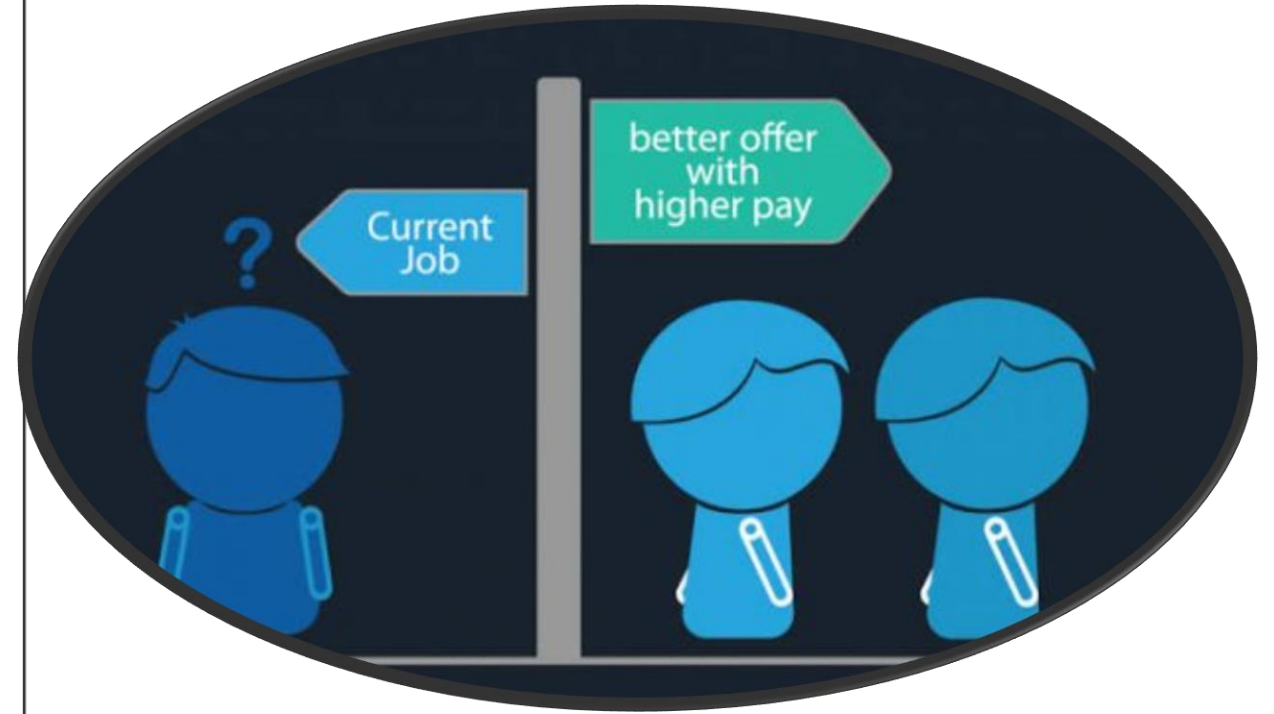


Retail Trade 11.7% Turnover



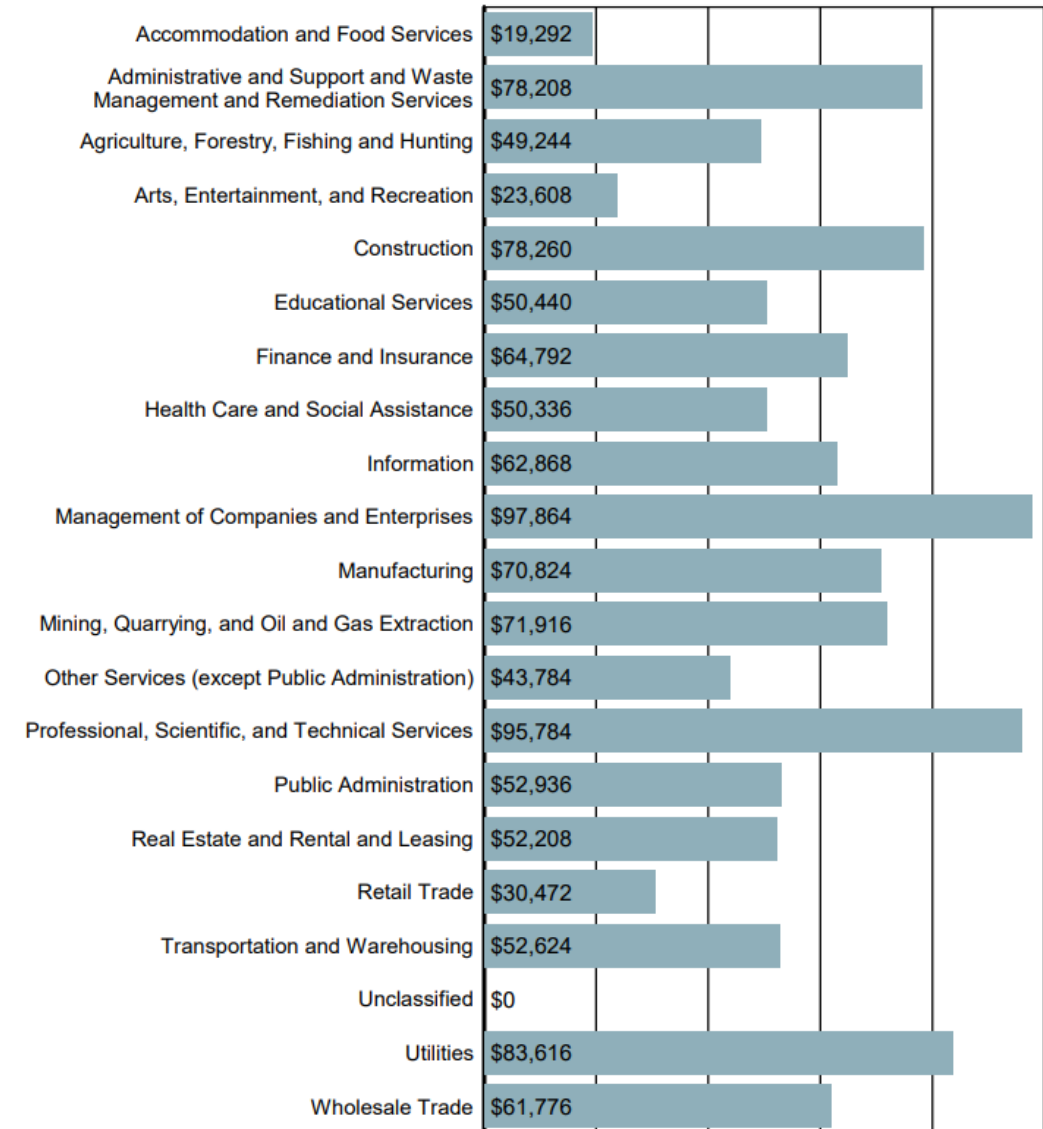


*TURNOVER BY INDUSTRY



Source: U.S. Census Bureau, Local Employment Dynamics - 2020 Q1

AVERAGE ANNUAL WAGE BY INDUSTRY



Source: S.C. Department of Employment & Workforce
Quarterly Census of Employment and Wages (QCEW) - 2022 Q4

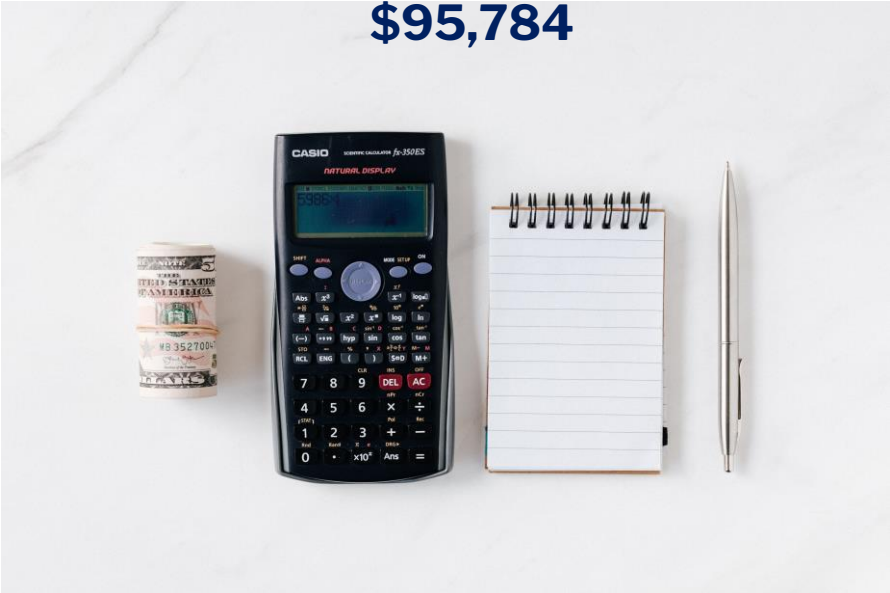


**SHOW
ME
THE
MONEY!!!**



Professional, Scientific, and Technical Services

\$95,784



Management Companies
and Enterprises
\$97,864 Annual Wage



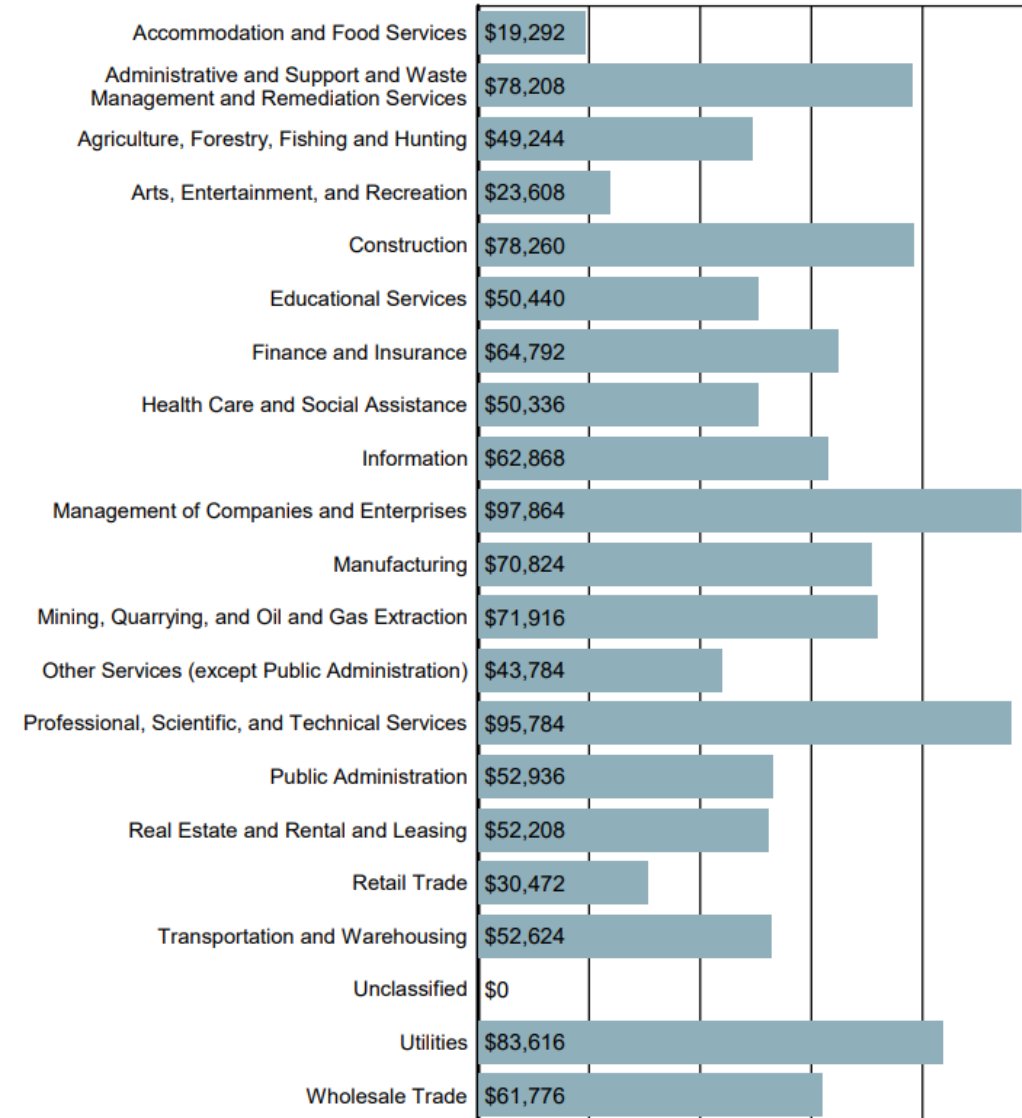
Construction
\$78,260 Annual Wage



Utilities

\$83,616 Annual Wage

AVERAGE ANNUAL WAGE BY INDUSTRY



Source: S.C. Department of Employment & Workforce
Quarterly Census of Employment and Wages (QCEW) - 2022 Q4



AGE OF WORKERS BY INDUSTRY

Industry	14-18	19-21	22-24	25-34	35-44	45-54	55-64	65+
Public Administration	19	80	135	759	836	887	841	352
Transportation and Warehousing	8	19	37	225	310	348	368	130
Professional and Technical Services	20	37	61	235	345	363	368	162
Information	0	4	9	50	67	64	56	44
Educational Services	16	26	82	691	1,057	1,510	1,334	468
Retail Trade	432	851	669	1,823	1,632	1,535	1,444	729
Health Care and Social Assistance	24	166	316	1,815	1,977	1,981	1,751	774
Management of Companies and Enterprises	6	10	8	42	61	77	60	12
Administrative and Waste Services	41	275	298	981	823	631	595	231
Other Services, Except Public Administration	33	100	91	299	341	390	402	190
Wholesale Trade	9	27	31	154	223	257	228	100
Finance and Insurance	5	34	76	354	445	386	374	135
Mining, Quarrying, and Oil and Gas Extraction	0	3	3	15	7	15	6	0
Manufacturing	30	207	377	2,005	2,216	2,442	2,242	487
Real Estate and Rental and Leasing	10	9	12	54	92	74	77	35
Agriculture, Forestry, Fishing and Hunting	40	34	37	168	190	176	192	115
Utilities	3	3	8	38	67	46	44	13
Construction	45	259	296	955	966	835	732	288
Arts, Entertainment, and Recreation	41	36	27	74	85	69	77	85
Accommodation and Food Services	864	684	456	1,076	819	626	463	208

Source: U.S. Census Bureau, Local Employment Dynamics - 2020 Q3



Retail Trade(most)
Ages 14-65+ ranging from 432-1,823



Manufacturing (higher)
Ages 45-54 with 2,442 Workers





AGE OF WORKERS BY INDUSTRY

Industry	14-18	19-21	22-24	25-34	35-44	45-54	55-64	65+
Public Administration	19	80	135	759	836	887	841	352
Transportation and Warehousing	8	19	37	225	310	348	368	130
Professional and Technical Services	20	37	61	235	345	363	368	162
Information	0	4	9	50	67	64	56	44
Educational Services	16	26	82	691	1,057	1,510	1,334	468
Retail Trade	432	851	669	1,823	1,632	1,535	1,444	729
Health Care and Social Assistance	24	166	316	1,815	1,977	1,981	1,751	774
Management of Companies and Enterprises	6	10	8	42	61	77	60	12
Administrative and Waste Services	41	275	298	981	823	631	595	231
Other Services, Except Public Administration	33	100	91	299	341	390	402	190
Wholesale Trade	9	27	31	154	223	257	228	100
Finance and Insurance	5	34	76	354	445	386	374	135
Mining, Quarrying, and Oil and Gas Extraction	0	3	3	15	7	15	6	0
Manufacturing	30	207	377	2,005	2,216	2,442	2,242	487
Real Estate and Rental and Leasing	10	9	12	54	92	74	77	35
Agriculture, Forestry, Fishing and Hunting	40	34	37	168	190	176	192	115
Utilities	3	3	8	38	67	46	44	13
Construction	45	259	296	955	966	835	732	288
Arts, Entertainment, and Recreation	41	36	27	74	85	69	77	85
Accommodation and Food Services	864	684	456	1,076	819	626	463	208

Source: U.S. Census Bureau, Local Employment Dynamics - 2020 Q3



LABOR MARKET PROJECTIONS

TOTAL EMPLOYMENT

BY INDUSTRY



Note: Projections are available by Workforce Investment Area (WIA). The data displayed is selected from the appropriate WIA.

Worklink Industry	2020 Estimated Employment	2030 Projected Employment	Change	Percent Change	Annual Percent
Total All Industries	136,740	147,200	10,460	7.65	0.74
Health Care and Social Assistance	16,133	20,483	4,350	26.96	2.42
Accommodation and Food Services	13,405	15,562	2,157	16.09	1.50
Manufacturing	25,610	27,017	1,407	5.49	0.54
Administrative and Support and Waste Management and Remediat	4,621	5,470	849	18.37	1.70
Other Services (except Government)	6,253	6,996	743	11.88	1.13
Arts, Entertainment, and Recreation	1,674	2,209	535	31.96	2.81
Transportation and Warehousing	2,372	2,791	419	17.66	1.64
Finance and Insurance	2,318	2,678	360	15.53	1.45
Retail Trade	17,607	17,904	297	1.69	0.17
Wholesale Trade	3,547	3,826	279	7.87	0.76
Information	817	1,070	253	30.97	2.73
Professional, Scientific, and Technical Services	3,360	3,566	206	6.13	0.60
Real Estate and Rental and Leasing	1,113	1,164	51	4.58	0.45
Agriculture, Forestry, Fishing and Hunting	810	860	50	6.17	0.60
Management of Companies and Enterprises	214	213	-1	-0.47	-0.05
Mining	172	166	-6	-3.49	-0.35
Construction	5,589	5,560	-29	-0.52	-0.05
Utilities	1,572	1,501	-71	-4.52	-0.46
Educational Services	15,651	13,896	-1,755	-11.21	-1.18

Source: S.C. Department of Employment & Workforce - Industry Projections

Note: Projections are available by Workforce Investment Area (WIA). The data displayed is selected from the appropriate WIA.

Santee-Lynches Occupation	2018 Estimated Employment	2028 Projected Employment	Openings (Replace)	Openings (Growth)	Annual Openings
Management Occupations	3,527	3,916			
Healthcare Support Occupations	2,137	2,549			
Food Preparation and Serving Related Occupations	6,322	7,164			
Life, Physical, and Social Science Occupations	709	786			
Total, All Occupations	71,572	78,761			
Sales and Related Occupations	7,540	7,898			
Computer and Mathematical Occupations	785	975			
Farming, Fishing, and Forestry Occupations	748	670			
Transportation and Material Moving Occupations	4,882	5,464			
Business and Financial Operations Occupations	2,310	2,654			
Legal Occupations	385	473			
Education, Training, and Library Occupations	4,047	4,299			
Construction and Extraction Occupations	3,038	3,588			
Office and Administrative Support Occupations	9,637	10,055			
Community and Social Service Occupations	1,775	2,091			
Installation, Maintenance, and Repair Occupations	3,375	3,900			
Architecture and Engineering Occupations	714	841			
Production Occupations	7,689	8,132			
Personal Care and Service Occupations	2,786	3,177			
Arts, Design, Entertainment, Sports, and Media Occupations	718	752			
Building and Grounds Cleaning and Maintenance Occupations	2,635	2,998			
Healthcare Practitioners and Technical Occupations	3,793	4,222			
Protective Service Occupations	2,020	2,157			

Source: S.C. Department of Employment & Workforce - Occupational Projections

*LABOR MARKET PROJECTIONS TOTAL EMPLOYMENT BY OCCUPATION



*LABOR MARKET PROJECTIONS GROWING OCCUPATIONS

Note: Projections are available by Workforce Investment Area (WIA). The data displayed is selected from the appropriate WIA.

Santee-Lynches Occupation	2018	2028	Percent Change	Replace	Growth	Total	Average Salary
	Estimated Employment	Projected Employment					
Veterinary Assistants and Laboratory Animal Caretakers	13	19	46				\$ 27,722
Physician Assistants	43	59	37				\$ 99,876
Paralegals and Legal Assistants	141	188	33				\$ 40,924
Substance Abuse, Behavioral Disorder, and Mental Health Coun	29	38	31				\$ 38,210
Phlebotomists	59	77	31				\$ 33,851
Nurse Practitioners	102	133	30				\$ 103,039
Management Analysts	338	439	30				\$ 89,382
Market Research Analysts and Marketing Specialists	146	185	27				\$ 58,511
Financial Managers	195	246	26				\$ 113,086
Mechanical Engineers	66	83	26				\$ 82,598
Tax Preparers	24	30	25				\$ 30,009
Plumbers, Pipefitters, and Steamfitters	256	319	25				\$ 46,079
Cooks, Restaurant	641	796	24				\$ 26,660
Medical Assistants	352	433	23				\$ 32,863
Industrial Engineers	211	259	23				\$ 86,836
First-Line Supervisors of Landscaping, Lawn Service, and Gro	73	89	22				\$ 39,900
Personal Financial Advisors	64	78	22				\$ 92,331
Security and Fire Alarm Systems Installers	55	67	22				\$ 43,398
Medical and Health Services Managers	190	231	22				\$ 111,814
Architectural and Engineering Managers	51	62	22				\$ 123,474

Occupations are sorted by highest estimated percentage growth from estimate year to projection year.

Source: S.C. Department of Employment & Workforce - Occupational Projections

*LABOR MARKET PROJECTIONS DECLINING OCCUPATIONS

Note: Projections are available by Workforce Investment Area (WIA). The data displayed is selected from the appropriate WIA.

Santee-Lynches	2018	2028					
Occupation	Estimated Employment	Projected Employment	Percent Change	Replace	Growth	Total	Average Salary
Logging Equipment Operators	136	102	-25				\$ 39,561
Floral Designers	37	29	-22				\$ 27,173
Switchboard Operators, Including Answering Service	28	24	-14				\$ 25,859
Data Entry Keyers	21	18	-14				\$ 34,865
Executive Secretaries and Executive Administrative Assistant	148	127	-14				\$ 55,437
Postmasters and Mail Superintendents	11	10	-9				\$ 86,280
File Clerks	12	11	-8				\$ 27,688
Cooks, Fast Food	254	236	-7				\$ 20,558
Sewing Machine Operators	168	157	-7				\$ 27,697
Library Assistants, Clerical	16	15	-6				\$ 28,053
Inspectors, Testers, Sorters, Samplers, and Weighers	353	331	-6				\$ 38,966
Advertising Sales Agents	18	17	-6				\$ 42,309
First-Line Supervisors of Farming, Fishing, and Forestry Workers	56	53	-5				\$ 54,995
Bill and Account Collectors	23	22	-4				\$ 31,091
Legal Secretaries	26	25	-4				\$ 32,603
Human Resources Assistants, Except Payroll and Timekeeping	85	82	-4				\$ 39,521
Procurement Clerks	29	28	-3				\$ 39,595
Correctional Officers and Jailers	723	699	-3				\$ 35,922
Secretaries and Administrative Assistants, Except Legal, Medical, and Health	1,026	992	-3				\$ 35,762
Packers and Packagers, Hand	189	183	-3				\$ 31,761

Occupations are sorted by highest estimated percentage decline from estimate year to projection year.

JOBS REQUIRING NO FORMAL EDUCATION/HIGH SCHOOL DIPLOMA OR EQUIVALENT

- **Sales Representative, Wholesale and Manufacturing, Except Technical and Scientific Products (\$32.61)**
- **Electricians (\$23.28)**
- **First-Line Supervisor of Construction Trades and Extraction Workers (\$31.73)**
- **Industry Machinery Mechanics (\$26.29)**





JOBS REQUIRING A POSTSECONDARY NON-DEGREE AWARD/ASSOCIATE'S DEGREE

- **Paralegal and Legal Assistants
(\$22.45)**



**JOBS REQUIRING A
BACHELOR'S DEGREE,
MASTER'S DEGREE
AND/OR A DOCTORATE**

- **Mechanical Engineers (\$42.67)**
- **General and Operations Managers (\$51.88)**
- **Accountants and Auditors (\$32.94)**

WHAT IF I NEED TRAINING TO GET A JOB?



SC Works centers are operated by a local Council of Governments. Visit their website here: <http://www.worklinkweb.com>.

The Worklink area is now providing services from all of its centers.

And as always, these online services are available 24/7:

The **Claimant Self Service Portal** where individuals can create an account and file for Unemployment Insurance Benefits.

The **SC Works Online Services (SCWOS)** site where jobseekers can upload a resume as well as search for work and businesses can post jobs and look for employees.

SC Works Centers

SC Works Centers include re-employment services for jobseekers, partner services, business services and resource rooms for use when filing for unemployment benefits or searching for work online.

Anderson Center

1428 Pearman Dairy Rd

Anderson, SC 29625

Telephone: (864) 642-0466 (TTY:711)

Monday - Friday, 8:30am - 5:00pm

Clemson Center

1376 Tiger Boulevard, Suite 102

Clemson, SC 29631

Telephone: (864) 643-0071

Monday - Friday, 8:30am - 5:00pm

Easley Center

1776 Powdersville Rd

Easley, SC 29642

Telephone: (864) 220-8990

Monday - Tuesday, 8:30AM - 12:00PM, 1:00PM - 5:00PM

Seneca Center

104 Vocational Dr

Seneca, SC 29672

Telephone: (864) 646-1741

Monday - Friday, 8:30AM - 1:00PM, 2:00PM - 5:00PM

Connection Points

Connection Points include free public access to computers and tools to guide jobseekers through the job search process.

Because the status of the connection point facilities is determined locally, please call ahead before visiting to ensure that they are open.

Anderson County Library

300 N. McDuffie Street

Anderson, SC 29621

Phone: (864) 260-4500

Pickens County Library - Hampton Memorial Branch

304 Biltmore Road

Easley, SC 29640

Phone: (864) 850-7077

Belton Library

91 Breazeale St,

Belton, SC 29627

Phone: (864) 338-8330

Jennie Erwin Library

318 N Shirley Ave,

Honea Path, SC 29654

Phone: (864) 369-7751

Iva Library

203 W Cruette St,

Iva, SC 29655

Phone: (864) 348-6150

Piedmont Library

1407 SC-86,

Piedmont, SC 29673

Phone: (864) 845-6534

Pickens County Library - Central-Clemson Regional Branch

105 Commons Way

Central, SC 29630

Phone: (864) 639-2711

Pickens County Library - Sartlin Branch

15 S Palmetto St.

Liberty, SC 29658

Phone: (864) 843-5805

Pickens County Library - Village Branch

124 N Catherine St.

Pickens, SC 29671

Phone: (864) 898-5747

Seneca Library

300 E. South 2nd St.

Seneca, SC 29678

Phone: (864) 882-4855

Lander Memorial Regional Library

925 Greenville Dr,

Williamston, SC 29697

Phone: (864) 847-5238

Pendleton Library

650 S Mechanic St,

Pendleton, SC 29670

Phone: (864) 646-3045

Westside Community Center

1100 W Franklin St,

Anderson, SC 29624

Phone: (864) 260-1093

Salem Library

5 Park Ave B,

Salem, SC 29676

Phone: (864) 944-0912

Westminster Library

112 W North Ave,

Westminster, SC 29693

Phone: (864) 364-5760

Westminster Community Center

112 W North Ave,

Westminster, SC 29693

Phone: (864) 364-5760

Powdersville Library

4 Civic Ct,

Powdersville, SC 29642

Phone: (864) 295-1190

Oconee County Library

501 W South Broad St,

Walhalla, SC 29691

Phone: (864) 638-4133

KEY LMI CONNECTIONS & CONTACTS

- Labor Market Information: Imicustomerservice@dew.sc.gov
- Data Dashboard: <https://dew.sc.gov/data-and-statistics/data-dashboard>
- Wylondria Jefferson; Workforce Outreach Coordinator Wjefferson@dew.sc.gov
803- 737-0352 (office)
803-629-0827 (mobile)
- Leah Price; Workforce Insights Analyst (assigned to Upstate WIOA)
Lprice@dew.sc.gov 803-737-2374 (office)
803-908-9588 (mobile)



DATA DASHBOARD



LMI WEBSITE



TRENDS



COMMUNITY PROFILE



HOT JOBS



Tell us how we did!
Please take the feedback survey



CONTACT US!



- ▶ If you need help finding data or analysis about our state's workforce, whether it's on our website or not, please don't hesitate to contact LMI.
- ▶ Email address: lmicustomerservice@dew.sc.gov
- ▶ Website: <https://scworkforceinfo.com>

THANK YOU FOR YOUR TIME!

An Equal Opportunity Employer/Program. Auxiliary aids and services available upon request to individuals with disabilities at ADA@dew.sc.gov.
For program funding details in compliance with the Stevens Amendment, please visit www.dew.sc.gov/funding.